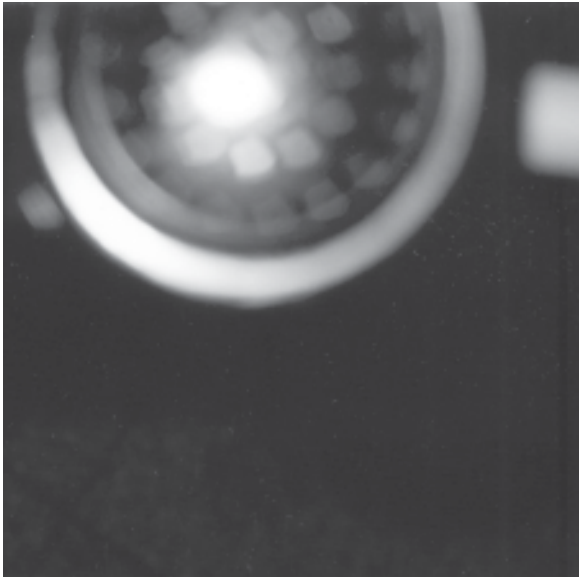


INDETERMINATE EXPLORATIONS
Kurt Espersen-Peters



In approaching the condition of the threshold, I found that the passages and transformations emerging from the original concept or idea to be multifarious and the sequential evolution to be unpredictable, yet illuminating. Where the project suggested the investigation of an idea, my personal commitment to an idea progressively evolved into an investigation of process: the series of events and decisions that took the idea beyond its point of inception to reveal unimaginable destinations. This process of moving from one idea to another becomes open-ended and indeterminate. Rather than adhere to the locus of a singular idea around which the investigation revolves, the process of indeterminate exploration breaks from this orbit to follow an aberrant trajectory, one in which the origin, as a point of departure, is no longer the governing agent yet it remains latent and implicit within the matrix of this process. The loss of the original frame of reference

throws the investigation into potential disarray: the clarity obtained with the rigorous investment in the initial idea is sacrificed in favour of an indeterminate destination with variable boundaries. Without the comfort of a referential locus, the process tentatively builds upon each subsequent effort; thus the parameters and context of each stage of the investigation are irrevocably altered to address new concerns or eventualities that arise from these exploratory efforts. The project, as a process, is always responding to previous developments and rarely does it consider the original point of departure: its developing path takes the it away from its source to engage new ideas and new methods of expression. Tracing this genealogy of development becomes, initially, the unconscious effort: it is not a project with definite aim nor is it one with an end but one with no projective vision beyond its immediate realization and no determinable or predictive end.

