

Climate Change Challenge

Safe Spaces for Climate Migrants

MAKE!

Design Brief

This activity invites participants to think about the experiences of child climate migrants by imagining and designing a safe and inclusive playground for them. Using natural and found materials, participants will design for many different kinds of interaction. Their playground

design may include sliding ramps, jumping mounds, climbable walls, swinging or hanging elements, and hiding spots. Providing opportunities for different kinds of play in a playground can actively support the development of children's social skills and learning abilities.

IMAGINE A PLAYGROUND FOR CLIMATE MIGRANT CHILDREN!

Using a letter-size piece of paper, have participants first draw out their imagined playground. Ask them to include places where the users have space to do many different activities such as sliding, running, crawling, swinging, digging, climbing and hiding.

Discuss what kinds of found or recycled materials children might use to build a playground if they were to construct it in real life. For example, they might include old tires in the playspace as an element for swinging, rolling or jumping.

GUIDELINES

- Discuss the different kinds of playgrounds that participants have played in, think of the kinds of structures used, and have children use their own knowledge and understanding of these spaces to build their own playground
- Educators can choose to do the drawing activity, the building activity or both to have children represent their imagined playgrounds, based on the time and materials available
- The materials suggested for use below are broad guidelines, and educators can replace any element listed here with a suitable alternative. Educators can add other materials as they wish if they are easier to access, or will enhance the project. Children may omit a material if they do not need it for the construction of their playground.
- Encourage communication and sharing between the team-members

MODIFICATIONS

- Children can work in pairs or in groups on a single playground to be time-efficient and promote teamwork.
- Group size can vary based on the time available to complete the task, and the age of the participants
- For younger children, have each child in a group explore a different material
- Keep the design simple or make it more complicated based on the availability of extra materials and age/abilities of participants.

SITUATING THE PLAYSHOP PARTICIPANTS: WHAT DO YOUR PLAYSPACES LOOK LIKE?

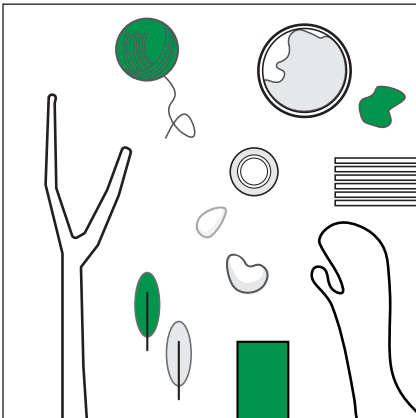
Think about the places you play in. Do you have a playground nearby? What does it look like? Do you know what the climbing and playing structures look like: Are they made of wood, plastic, or metal? Are there things to swing on, slide down, hide under, jump over? How do you play in your playground, and who do you play with? Have you ever made new friends there?

COLLECT YOUR BUILDING PARTS!

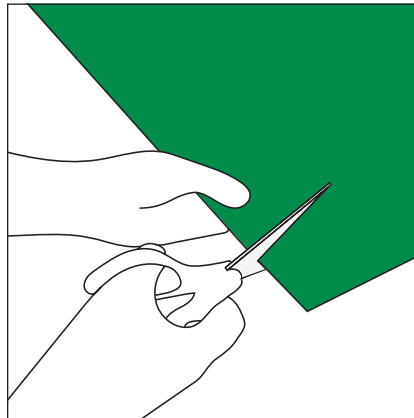
Things you can use:

- 1 Playdough or clay
(use these to stick elements together)
- 2 Rocks and/or Pebbles
(to add stepping stones or climbing elements)
- 3 Stick branches
(to represent something you might hang from, such as gym bars or ladders)
- 4 String
(use this to create swinging ropes, climbing structures or to link elements together)
- 5 Leaves
(could be incorporated to represent slides or rain/sun shelters)
- 6 Markers or pencils
(use these to draw on the objects in your playground)
- 7 Cardboard or rigid paper

DESIGN YOUR INCLUSIVE PLAYGROUND

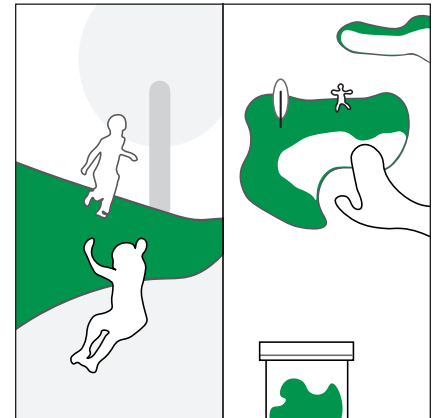


1 Gather all of the necessary materials. This can be done in advance or can be, in itself, a separate activity. Older children can use scissors to cut leaves, paper rolls, corks or strings.



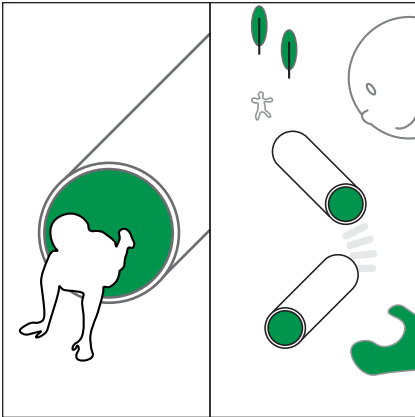
2 Cut the cardboard (or rigid paper) into letter-sized pieces.

Your cardboard piece will act as a sturdy base for the playground model.

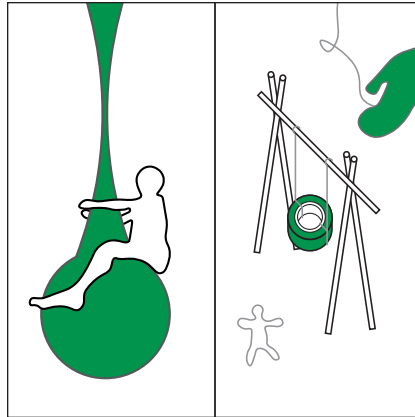


3 Create places for running and sliding.

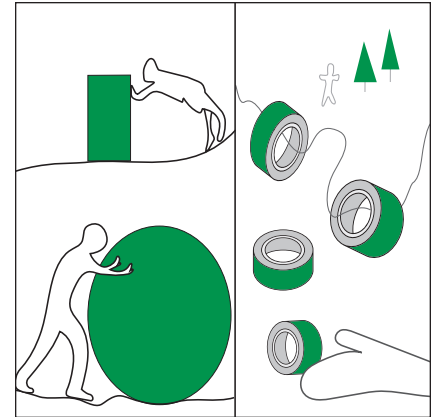
DESIGN YOUR INCLUSIVE PLAYGROUND



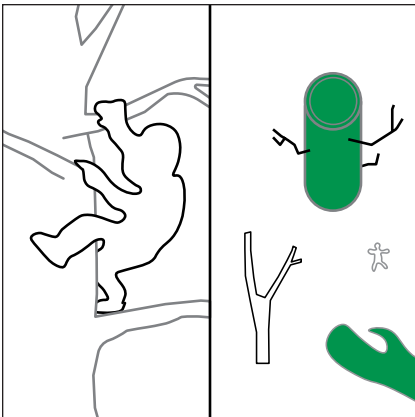
4 Add places for crawling!



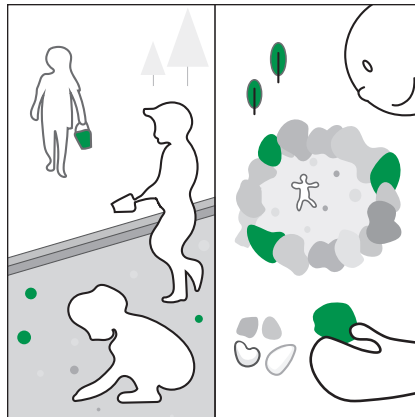
5 Include modules for children to swing on.



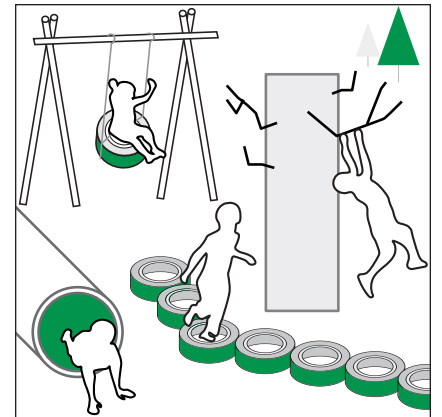
6 Introduce an element that can be pushed or rolled around the playspace.



7 Add a module that children can climb on.



8 Include a place where children can dig.



9 Imagine yourself playing inside the playspace you made! Who will you play with?