



EAST ASIAN STUDIES

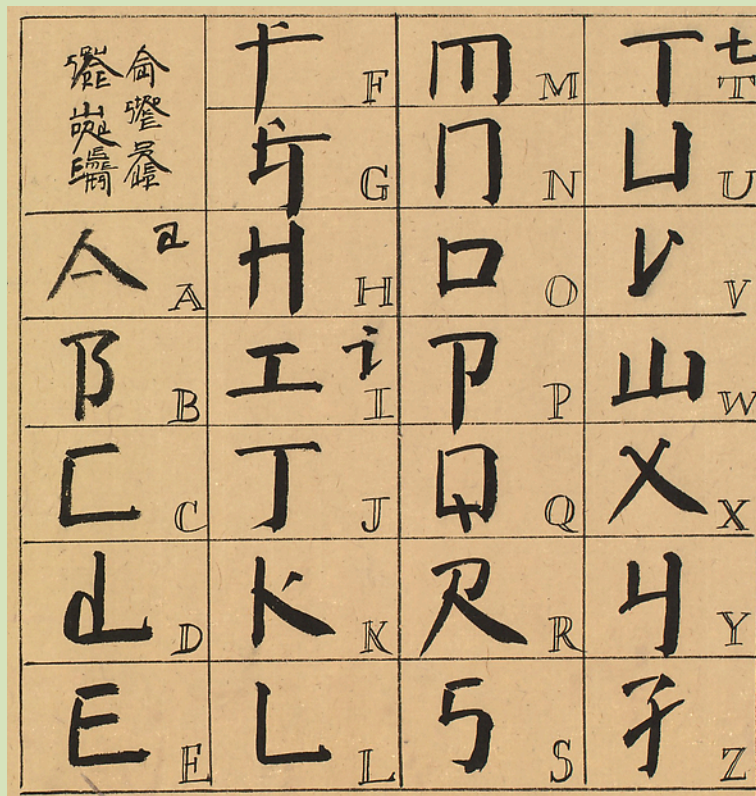
(CRN 162716) **EAST 352: CRITICAL APPROACHES TO CHINESE LITERATURE**

Professor Gal Gvili

Tuesdays, Thursdays 8:35-9:55

SH688, RM 491

Come discover modern Chinese literature: this course will focus on the 20th and 21st centuries to introduce types and forms in Chinese literature from the revolutionary novel to poetry blogs, from spoken drama to queer fiction. We will focus on primary reading and explore such themes as the rise of self-consciousness, China in the world, immigration and national identity, gender and sexuality.



Xu Bing, An Introduction to Square Word Calligraphy