

CADpass

CADpass is a CMC provided utility that creates a secure connection between client PC's, workstations and computer sessions, and the CMC managed NDN infrastructure. CADpass V3 is available for Windows, Linux, MAC, Android and IOS platforms.

Checking for CADpass

Before you start, check whether CADpass is installed: on your desktop, look for an **AppGate Client** icon as show below:



AppGate Client Icon

If you find the icon **AppGate Client**, it means CADpass is already installed on your PC. You can skip to the CADpass login instructions.

Installing Java

The installation of CADpass needs the latest version of Java. Follow these steps to install Java on your PC:

1. Go to <http://www.cmc.ca/cadpass>. If you see the icon **CADpass** (see below), it means your PC already has java installed. Proceed to the section **Installing CADpass on Windows** or [Installing CADpass on Linux](#).



CADPass Icon

2. If you see the icon **Get Java** (see below), it means you do not currently have java installed on your computer. Click on the icon **Get Java** and the Java download page will then be opened in a new window.



Get Java Icon

3. Once you finish the installation, refresh the CMC CADpass page: <http://www.cmc.ca/cadpass>. The icon **Get Java** is now replaced by the icon **CADpass**.

Installing CADpass on Windows

CADpass V3 uses a Java Network Launching Protocol (JNLP) file, which needs to be saved to a temporary directory or the download folder based on your browsers settings. Please use the following procedures.

Using Internet Explorer

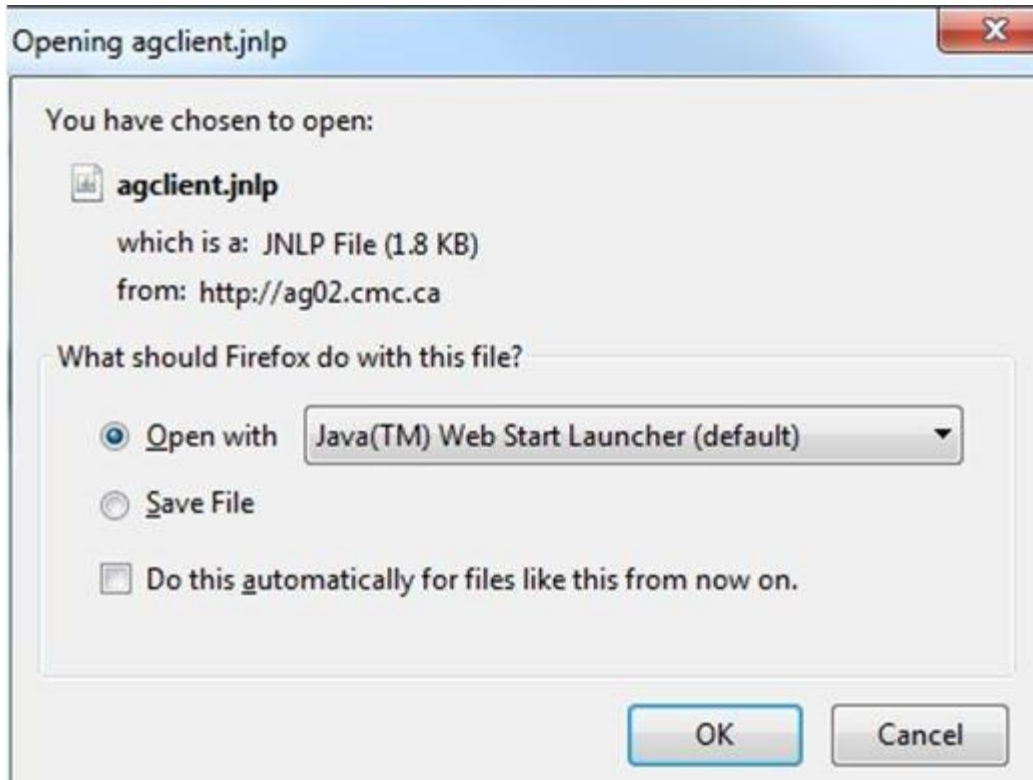
1. To start CADpass, click the button below. (This will not run if Java is not installed.)
2. Click **Run**.
CADpass is installed and an icon **AppGate Client** is added to your desktop.



Using Firefox

1. To start CADpass, click the button below. (This will not run if Java is not installed.)

The dialog **Opening agclient.jnlp** appears, as shown below.



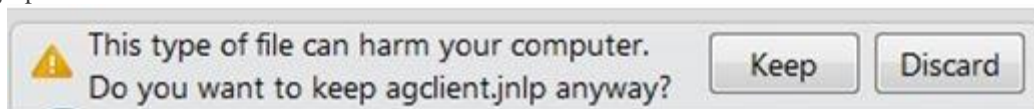
Opening agclient.jnlp in Firefox

2. Click **OK**.
3. Click **Run**.
CADpass is installed and an icon **AppGate Client** is added to your desktop.

Using Chrome

1. To start CADpass, click the button below. (This will not run if Java is not installed.)

A message appears at the bottom of the browser window and asks you whether to Keep or Discard the file agclient.jnlp as shown below.



Keep or Discard agclient.jnlp

2. Click **Keep**.
The file is then downloaded and shown at the bottom of the window, as shown above.
3. Click the button **agclient.jnlp** (as shown below) to launch.



agclient.jnlp Downloaded

3. Click **Run** (see below) to start the application.

CADpass is installed and an **AppGate Client** icon is added to your desktop.

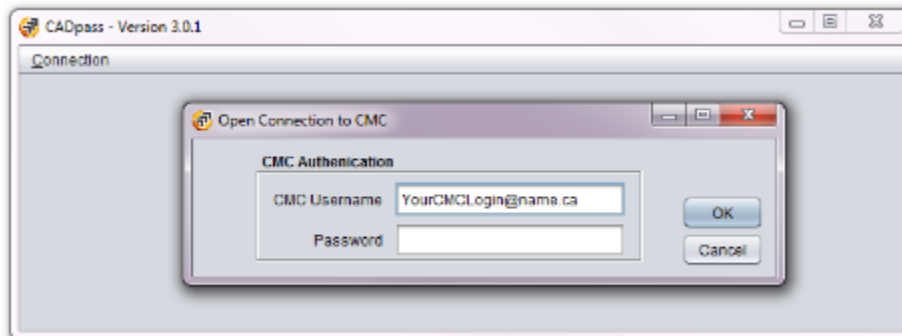
CADpass Login Instructions

1. If CADpass is not installed, follow the instructions in the section **Installing CADpass on Windows**.
2. Click the icon **AppGate Client** located on your desktop.



AppGate Client Icon

3. Login with your CMC login *username* (usually your email address) and *password*.



CADinfo will automatically be launched once you login successfully.

Note: CADinfo is for information purposes only and can be closed using the "x" in the top right corner.

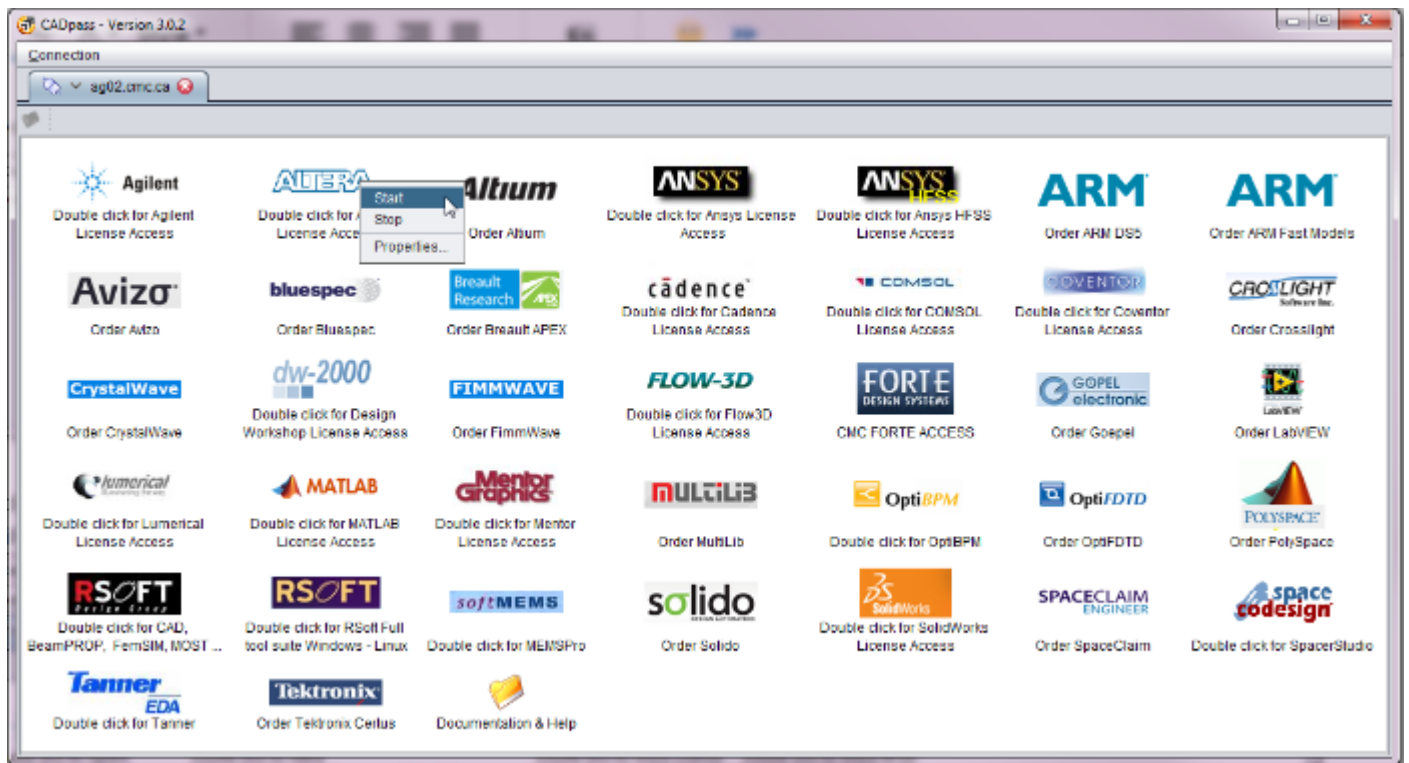
Welcome Joyce Stacey
 Subscriber: **James Bond**
 Subscription: **SUBSCRIPTION_PROTOTYPING**
 Expiry Date: **12-June-2014**
 Username: [REDACTED]

My Tools (10 Passes)

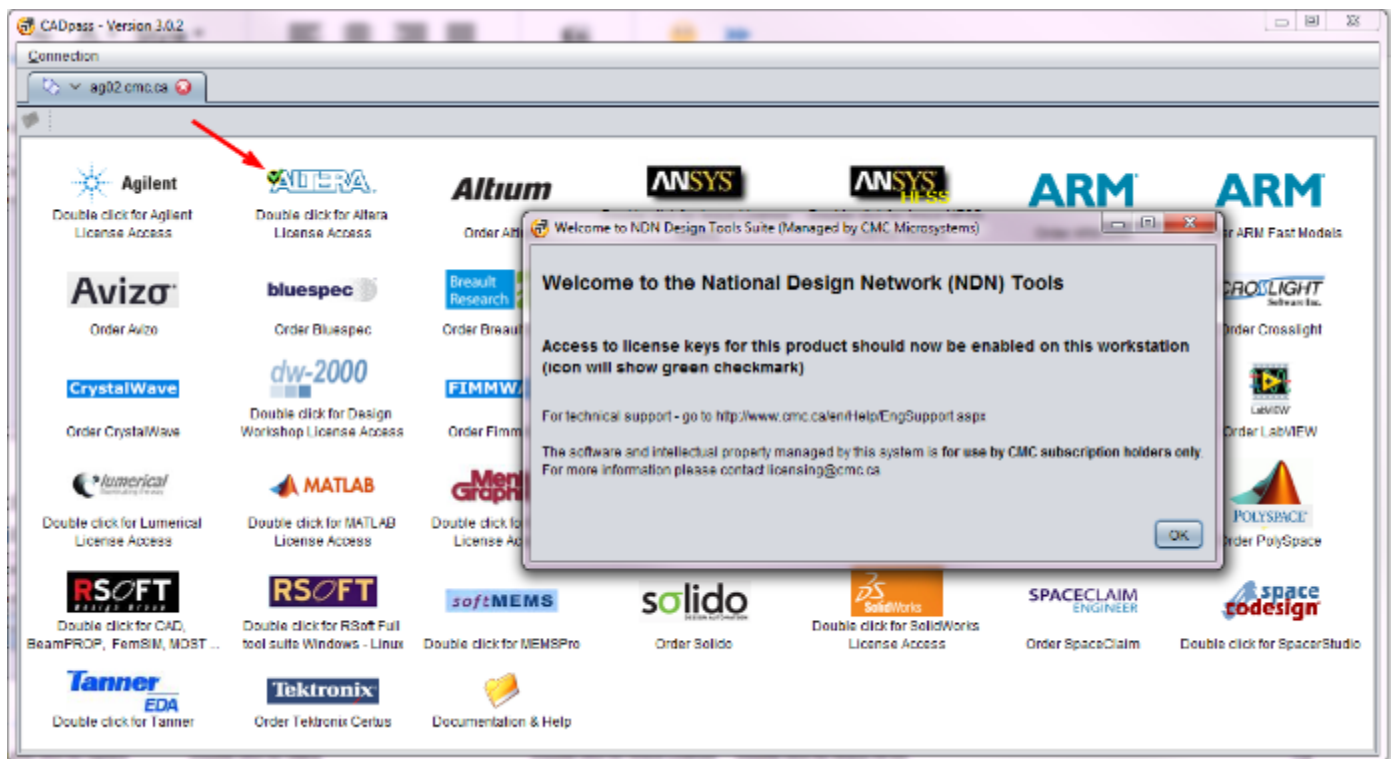
CAD Tool	Description	Version	Passes	Available
cadence™	Cadence University Bundle	v2012	2	Yes
cadence™	Cadence University Bundle	v2012	1	Yes
COMSOL	COMSOL Multiphysics (Base License)	v4.3	1	Yes
CADPASS	FIMMWAVE	v5.4.3	1	Yes
LABVIEW	LABVIEW	2012	1	Yes

Community | CMC Support | CAD Info | ?

- To connect to CMC managed services (e.g. CAD tool license server), double-click the icon of a CAD tool or right-click it and select **Start** (see below).

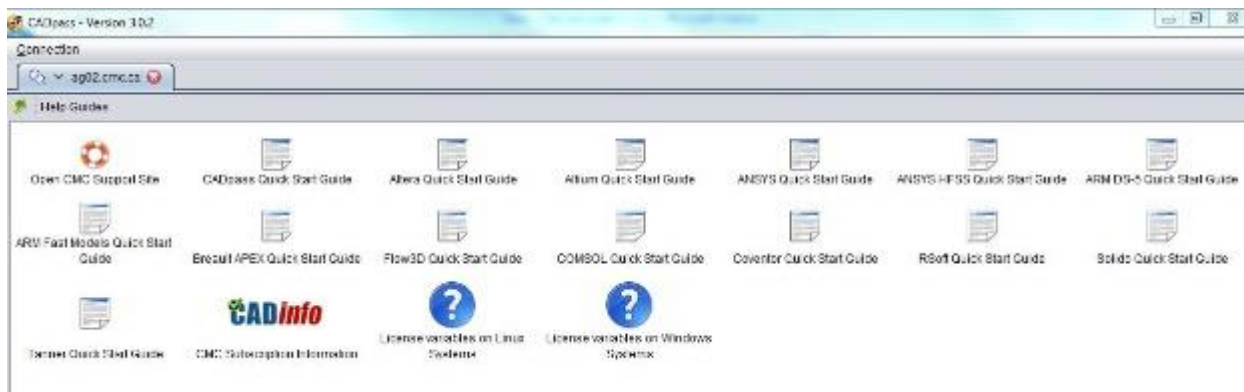
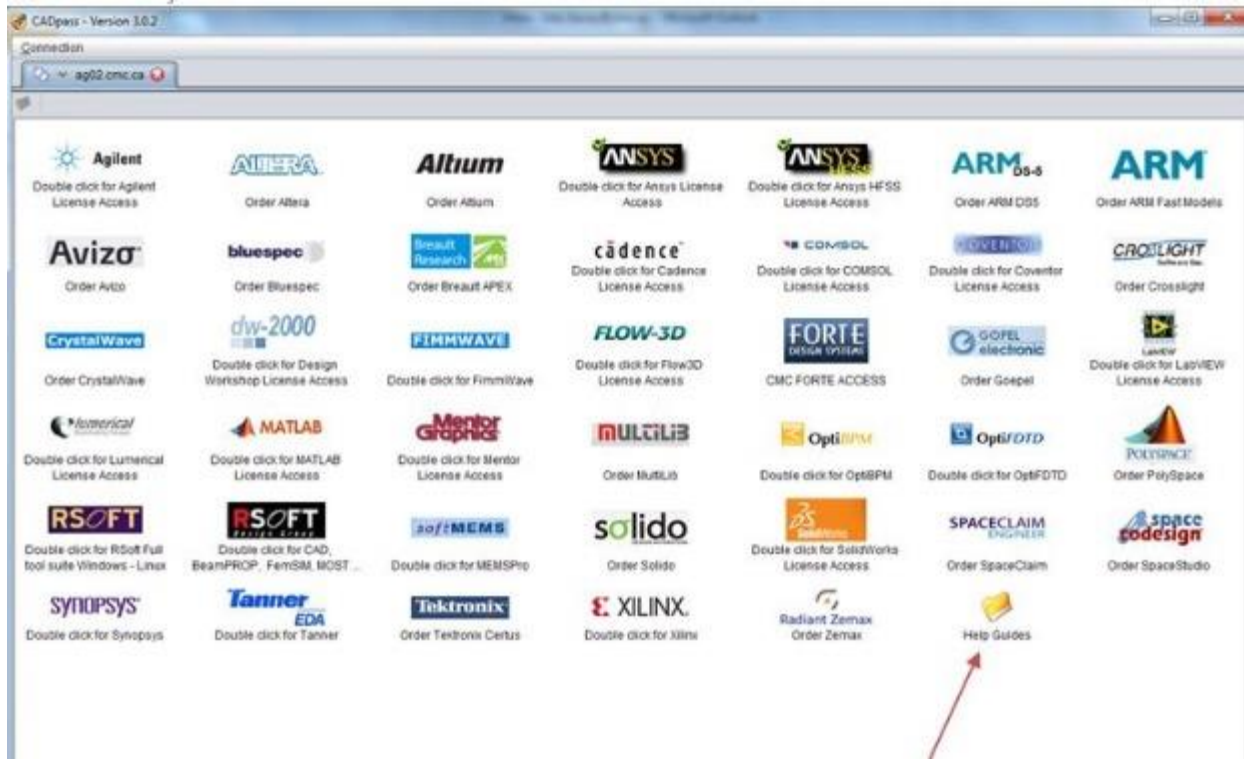


You will see a green checkmark as shown below.



4. Start your CAD tool.

- Review the associated CAD tool QuickStart guide located in the folder **Help Guides** for specific instructions on additional tool settings that may be required for CAD tool installation or operation.
For more information on how to download your software and for the Quickstart guides, visit our community website.



Important: Even though you get your license from CADpass, to access a CAD tool, you still need to download, install the software by following the Quickstart Guide of the tool.