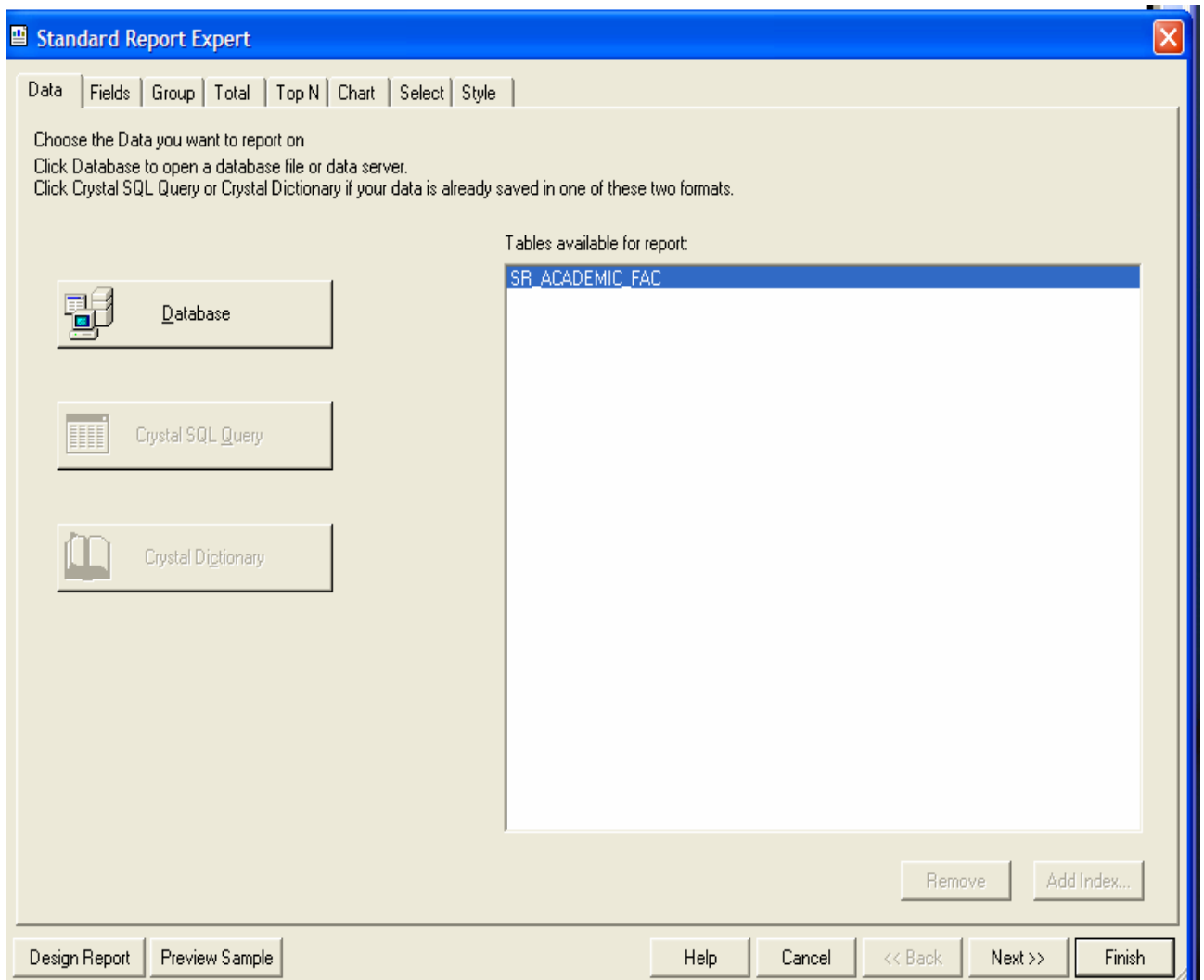
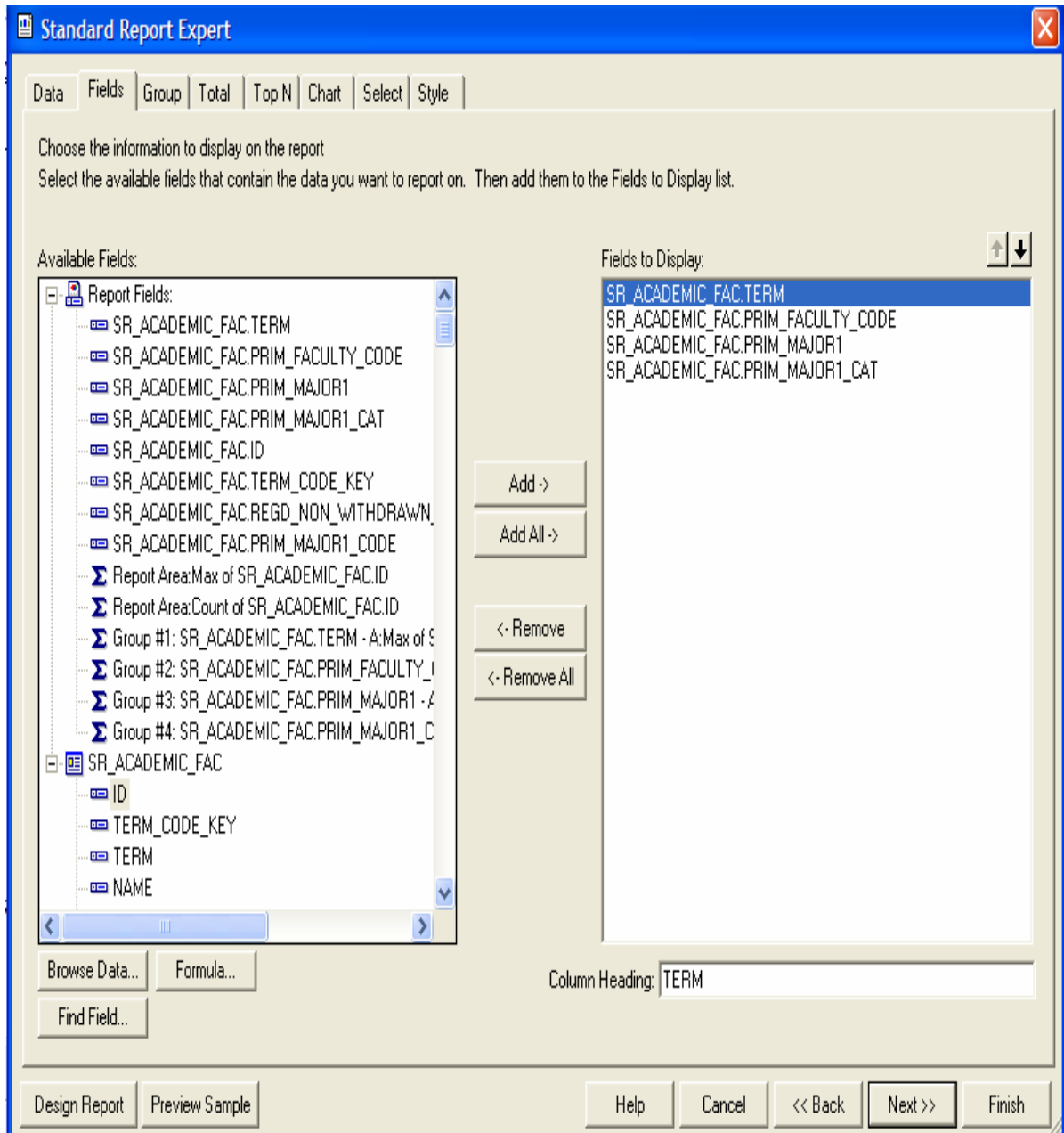


The view that we are going to use is **SR_ACADEMIC_FAC**



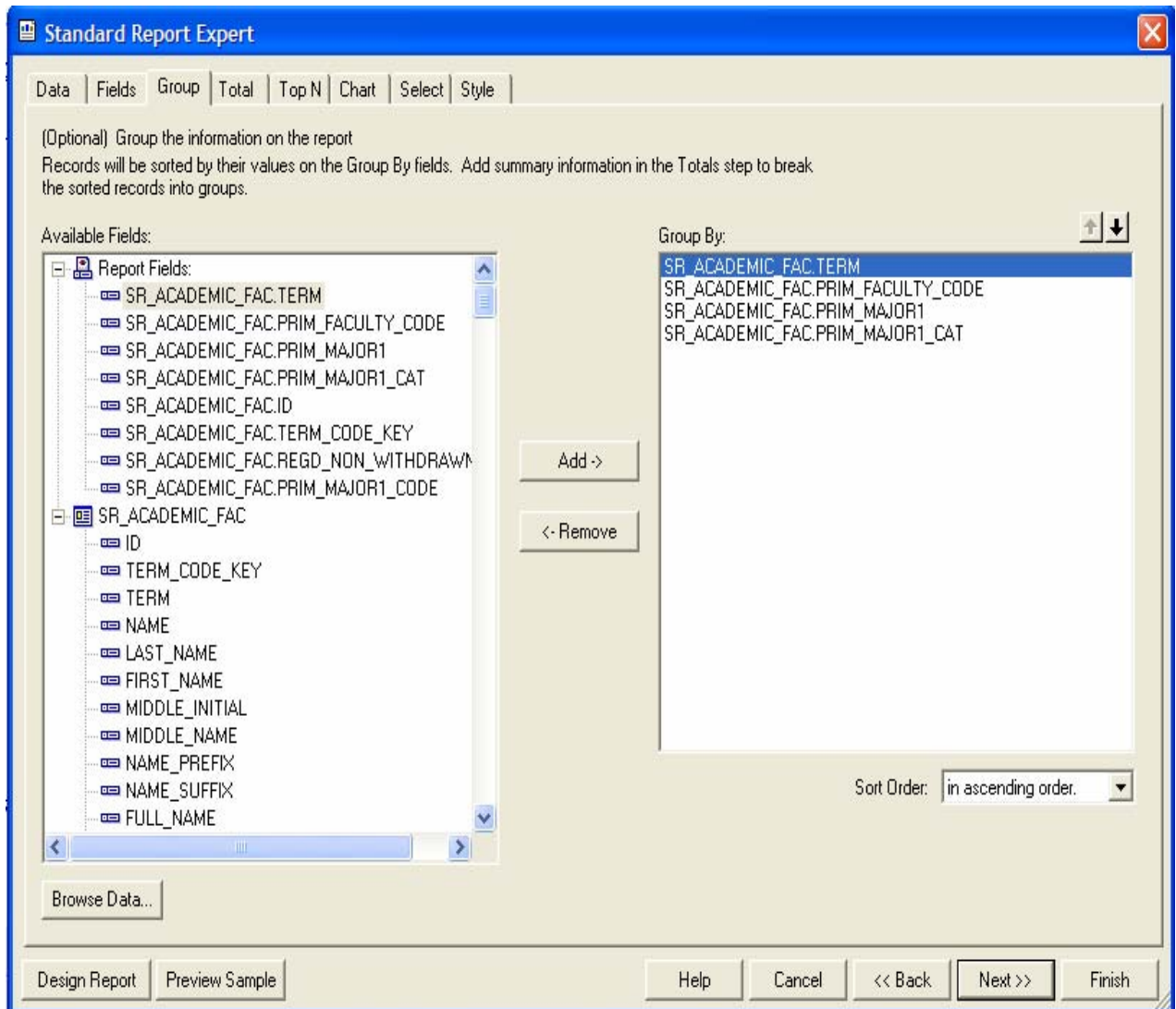
The **fields** we would like to **display** in our query:

- a) Term
- b) Prim_Faculty_Code
- c) Prim_Major1
- d) Prim_Major1_Cat



For the case of this query, we would want to **Group by**:

- a) Term
- b) Prim_Faculty_code
- c) Prim_Major1
- d) Prim_Major1_Cat



In order to count the number of students, we need to do a count by ID for each group.

Therefore, for **SR_ACADEMIC_FAC.TERM**:

Summarized Fields will be **SR_ACADEMIC_FAC.ID**

Summary Type will be **Count**

The screenshot shows the 'Standard Report Expert' dialog box with the following configuration:

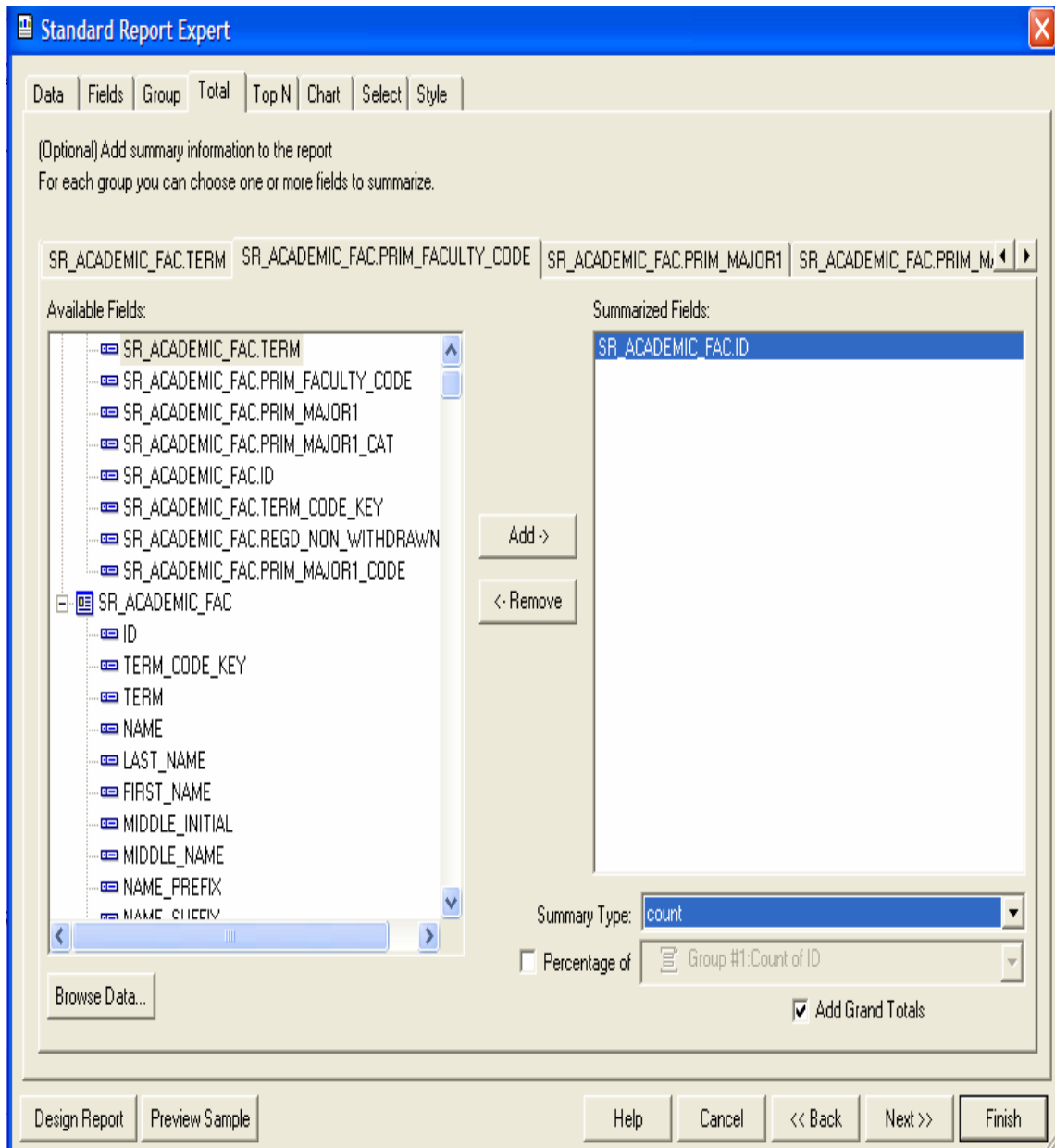
- Data:** SR_ACADEMIC_FAC.TERM | SR_ACADEMIC_FAC.PRIM_FACULTY_CODE | SR_ACADEMIC_FAC.PRIM_MAJOR1 | SR_ACADEMIC_FAC.PRIM_M...
- Available Fields:**
 - SR_ACADEMIC_FAC.TERM
 - SR_ACADEMIC_FAC.PRIM_FACULTY_CODE
 - SR_ACADEMIC_FAC.PRIM_MAJOR1
 - SR_ACADEMIC_FAC.PRIM_MAJOR1_CAT
 - SR_ACADEMIC_FAC.ID
 - SR_ACADEMIC_FAC.TERM_CODE_KEY
 - SR_ACADEMIC_FAC.REGD_NON_WITHDRAWN
 - SR_ACADEMIC_FAC.PRIM_MAJOR1_CODE
 - SR_ACADEMIC_FAC (expanded)
 - ID
 - TERM_CODE_KEY
 - TERM
 - NAME
 - LAST_NAME
 - FIRST_NAME
 - MIDDLE_INITIAL
 - MIDDLE_NAME
 - NAME_PREFIX
 - NAME_SUFFIX
- Summarized Fields:** SR_ACADEMIC_FAC.ID
- Summary Type:** count
- Percentage of:** Grand Total: Count of ID
- Add Grand Totals

Buttons at the bottom: Design Report, Preview Sample, Help, Cancel, << Back, Next >>, Finish.

For **SR_ACADEMIC_FAC.PRIM_FACULTY_CODE**:

Summarized Fields will be **SR_ACADEMIC_FAC.ID**

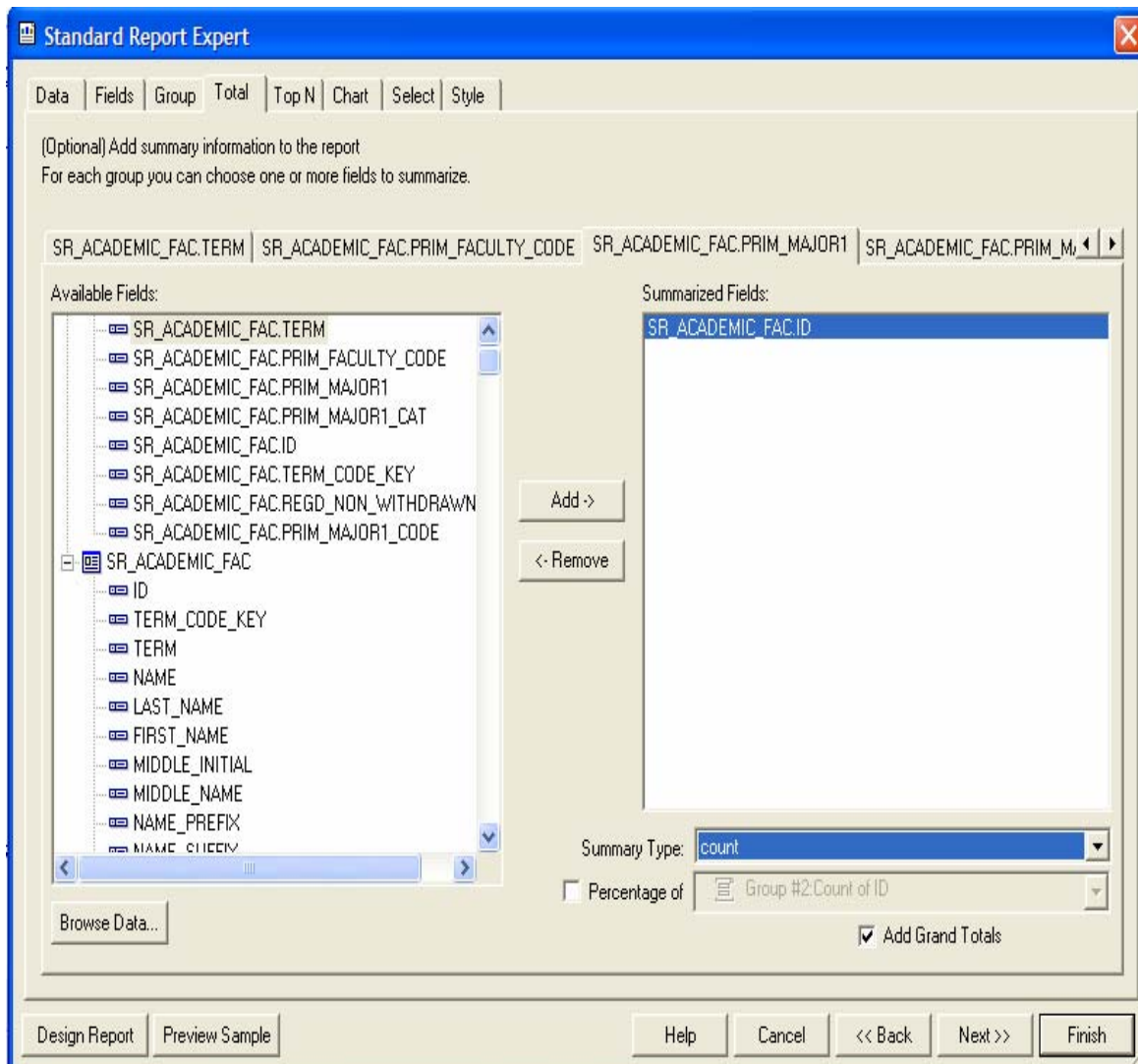
Summary Type will be **Count**



For **SR_ACADEMIC_FAC.PRIM_MAJOR1**:

Summarized Fields will be **SR_ACADEMIC_FAC.ID**

Summary Type will be **Count**



For **SR_ACADEMIC_FAC.PRIM_MAJOR1_CAT**:

Summarized Fields will be **SR_ACADEMIC_FAC.ID**

Summary Type will be **Count**

The screenshot shows the 'Standard Report Expert' dialog box with the 'Fields' tab selected. The 'Data' field is set to 'SR_ACADEMIC_FAC.PRIM_MAJOR1_CAT'. The 'Available Fields' list includes 'SR_ACADEMIC_FAC.ID', which has been moved to the 'Summarized Fields' list. The 'Summary Type' is set to 'count', and the 'Add Grand Totals' checkbox is checked.

Standard Report Expert

Data Fields Group Total Top N Chart Select Style

(Optional) Add summary information to the report
For each group you can choose one or more fields to summarize.

SR_ACADEMIC_FAC.PRIM_FACULTY_CODE SR_ACADEMIC_FAC.PRIM_MAJOR1 SR_ACADEMIC_FAC.PRIM_MAJOR1_CAT

Available Fields:

- SR_ACADEMIC_FAC.TERM
- SR_ACADEMIC_FAC.PRIM_FACULTY_CODE
- SR_ACADEMIC_FAC.PRIM_MAJOR1
- SR_ACADEMIC_FAC.PRIM_MAJOR1_CAT
- SR_ACADEMIC_FAC.ID
- SR_ACADEMIC_FAC.TERM_CODE_KEY
- SR_ACADEMIC_FAC.REGD_NON_WITHDRAWN
- SR_ACADEMIC_FAC.PRIM_MAJOR1_CODE
- SR_ACADEMIC_FAC
 - ID
 - TERM_CODE_KEY
 - TERM
 - NAME
 - LAST_NAME
 - FIRST_NAME
 - MIDDLE_INITIAL
 - MIDDLE_NAME
 - NAME_PREFIX
 - NAME_SUFFIX

Summarized Fields:

- SR_ACADEMIC_FAC.ID

Add ->

<- Remove

Summary Type: count

Percentage of Group #3: Count of ID

Add Grand Totals

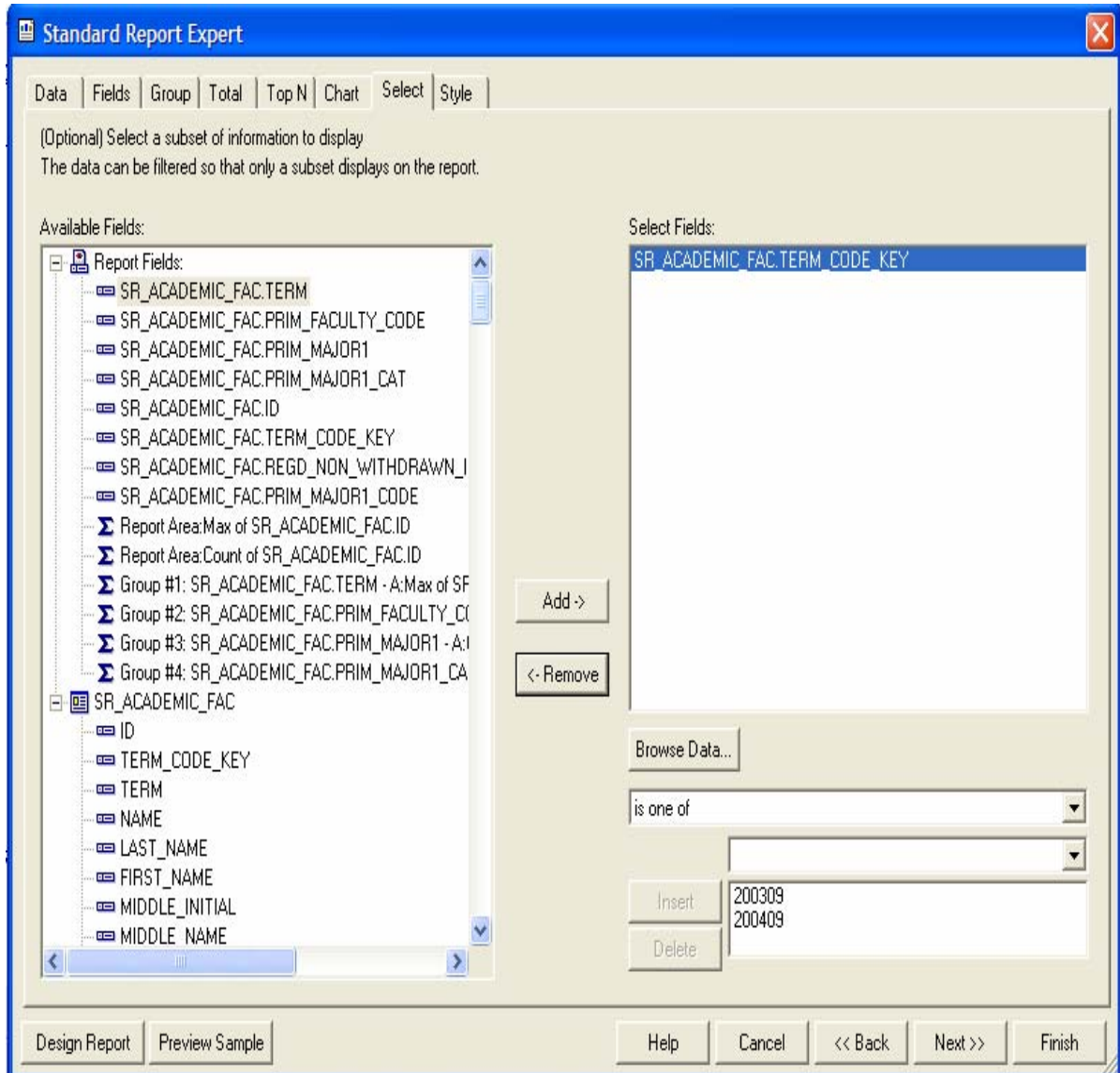
Browse Data...

Design Report Preview Sample Help Cancel << Back Next >> Finish

Then we click on the “Select” tab to select the criteria we need for the query.

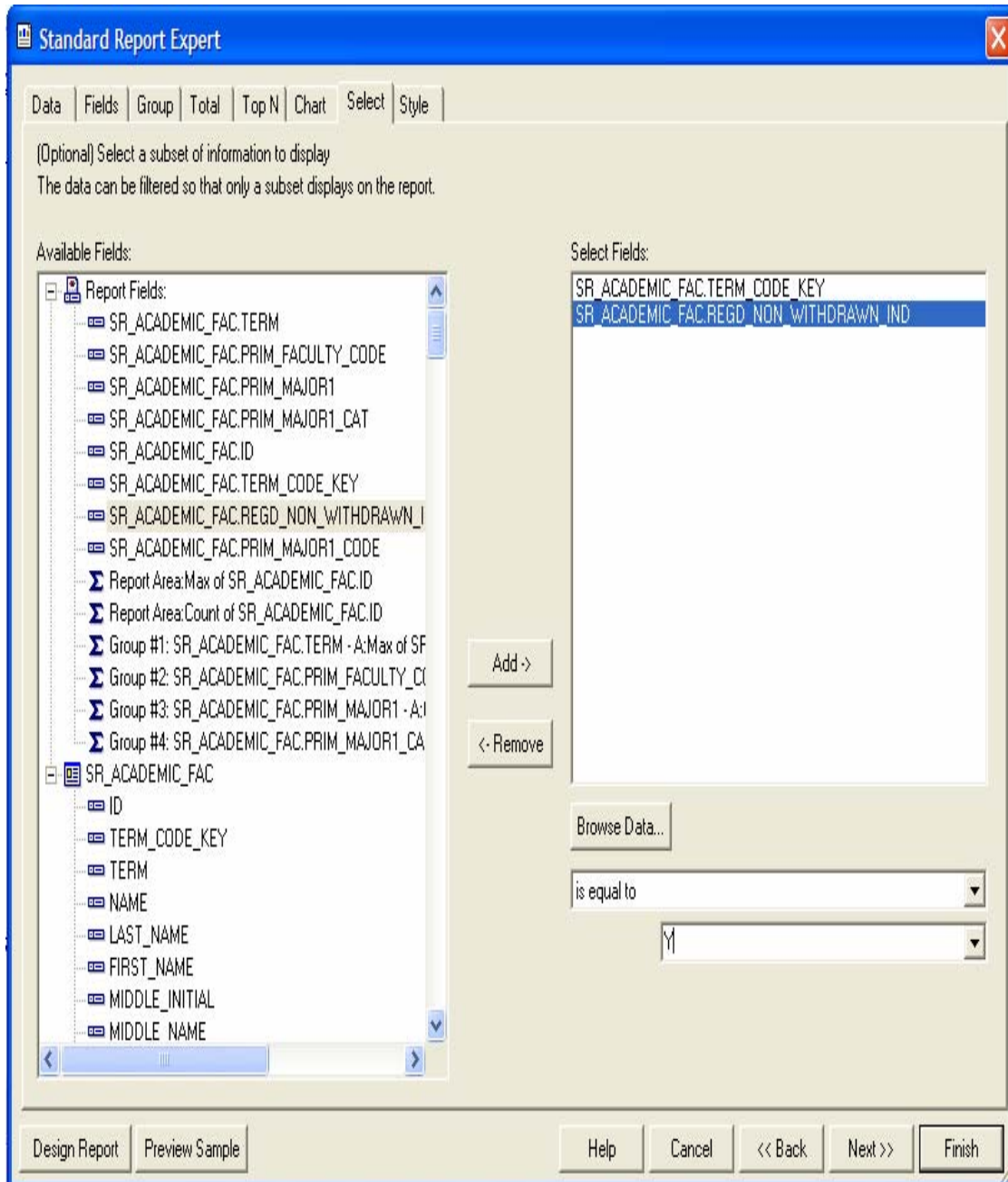
Since we need a count of students in 200309 and 200409, we select:

TERM_CODE_KEY is one of 200309, 200409



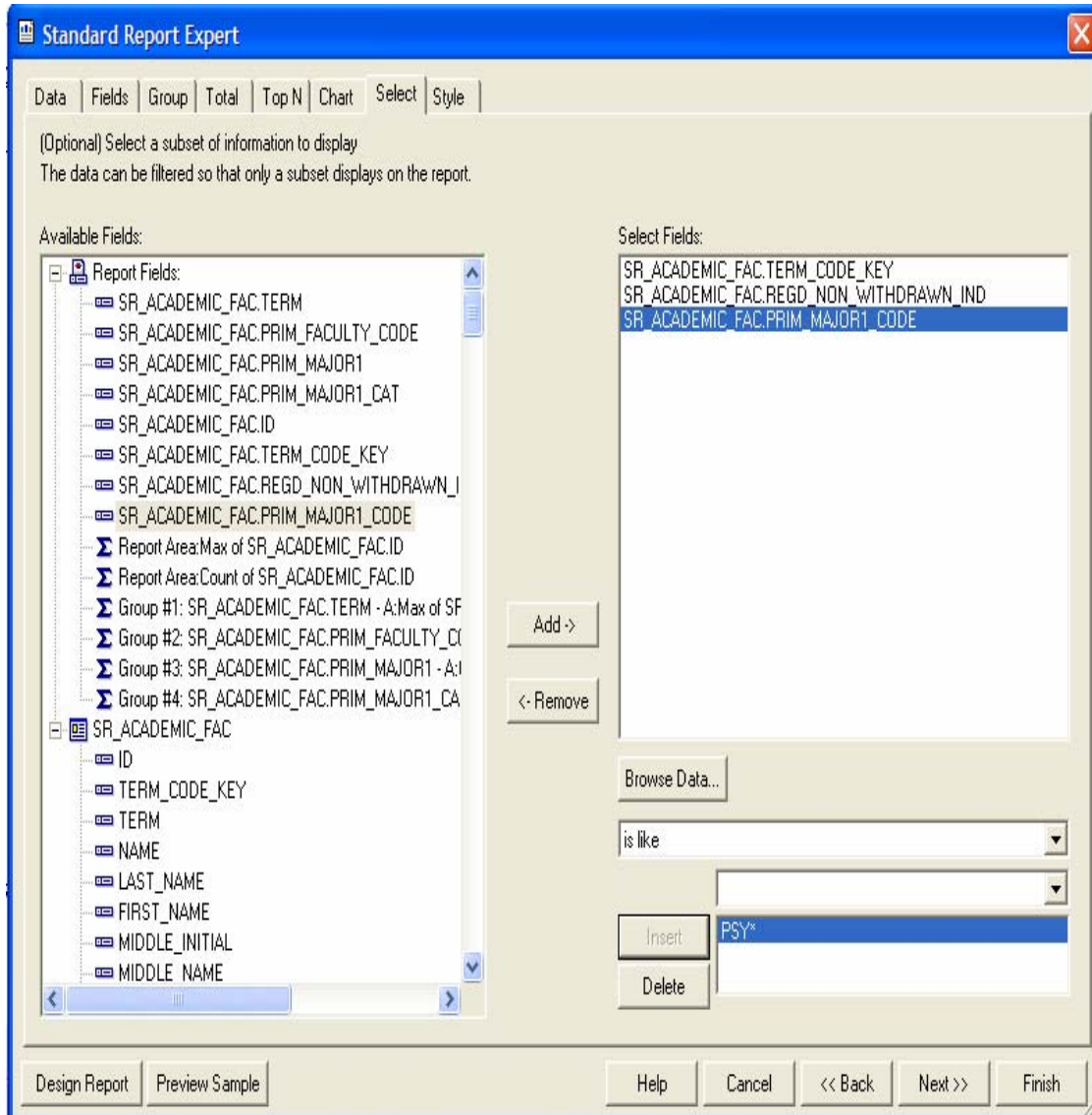
Since we need all registered students, then:

REGD_NON_WITHDRAWN_IND **is equal to Y**

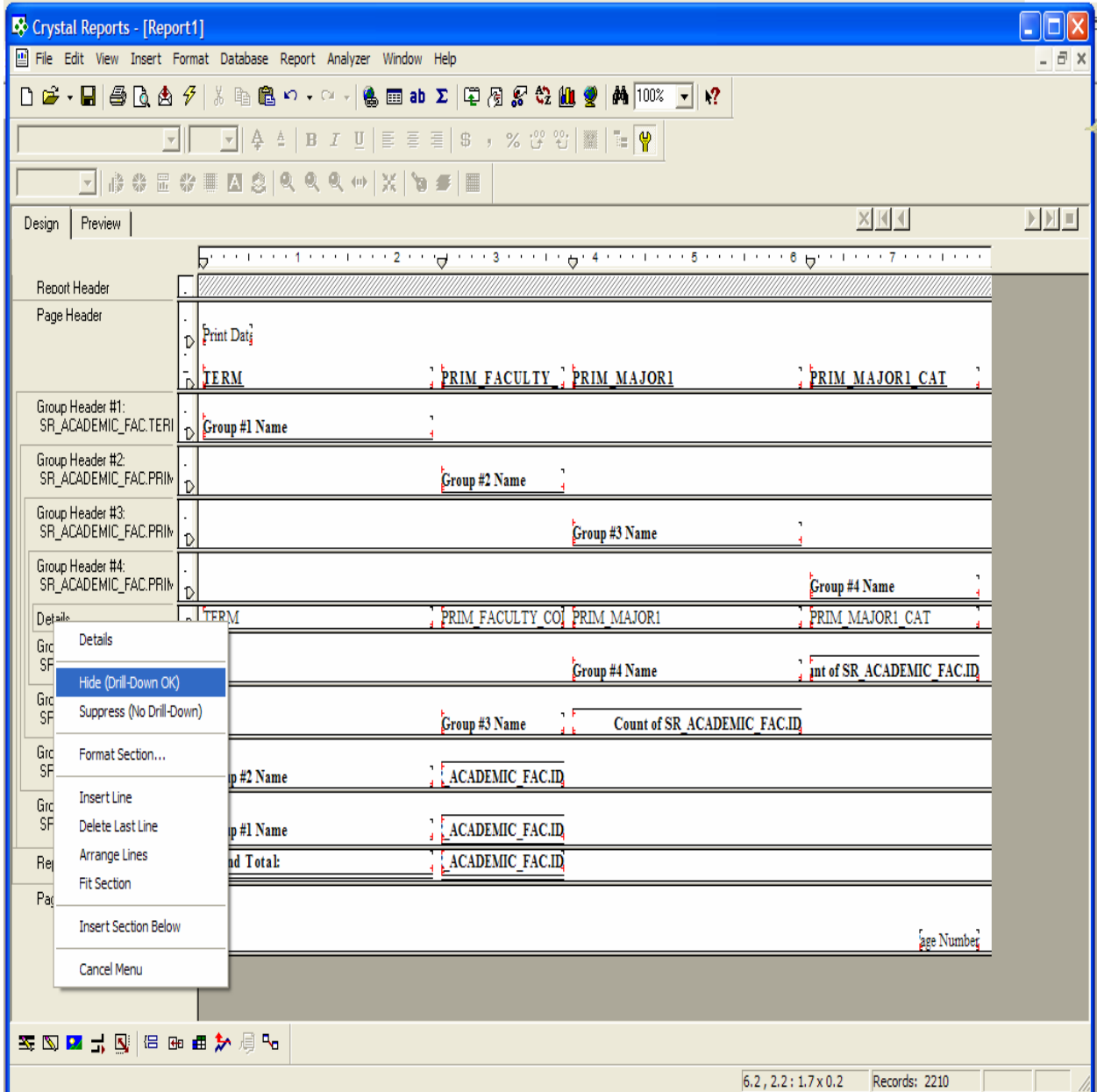


Since we want all students with a Prim_Major1_code in Psychology, then:

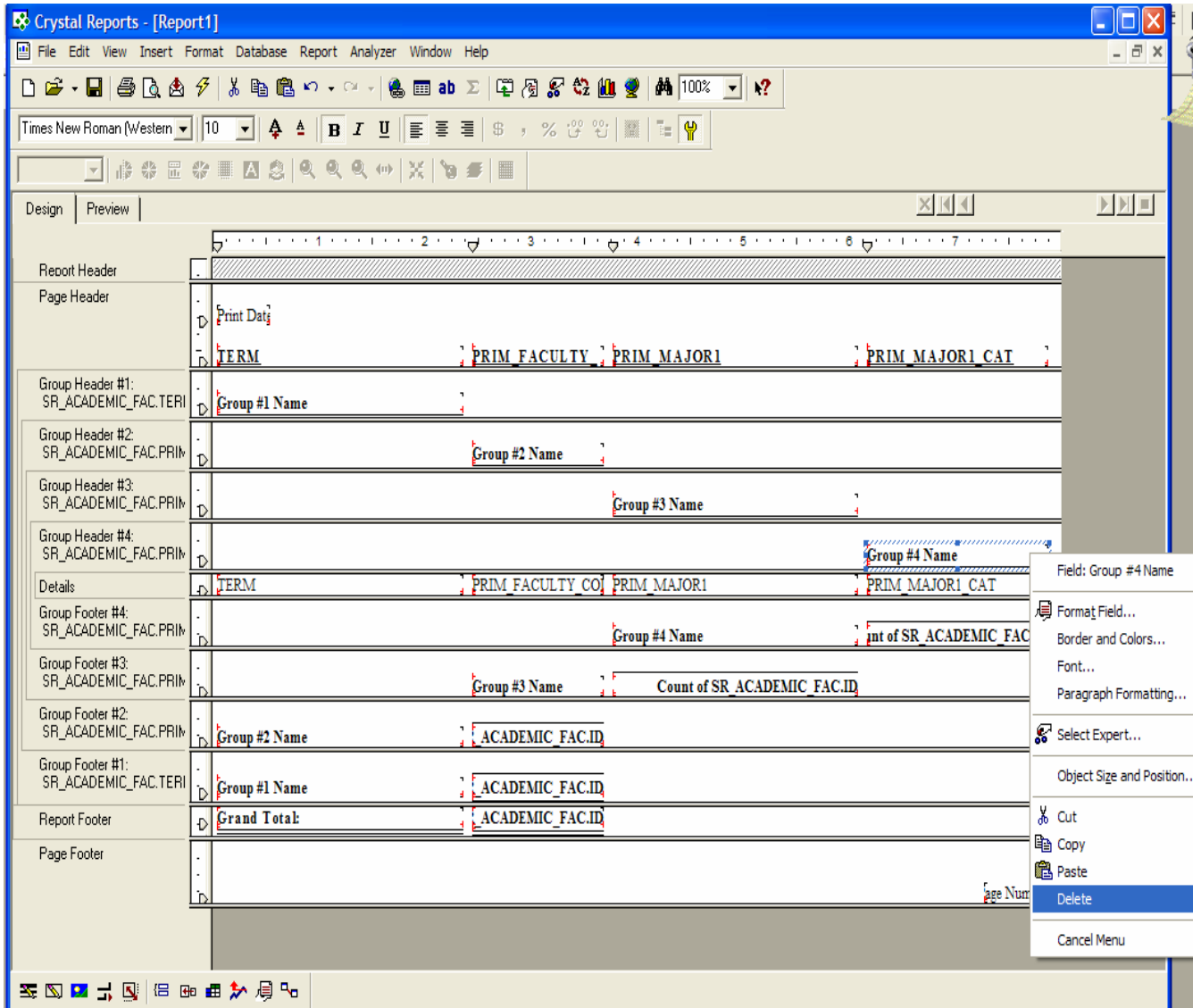
Prim_Major1_code **is like** PSY*



Since we just require a count, we can hide all the details by going into “Design”, right click on “Details” and select “hide”



You can also delete “Group 4 Name” since it appears twice. Hence, one can clean up the report as they wish by going into “Design”



If you click on **“Preview”** now, this is what will appear. It makes the data required much easier to read.

