

Full-Time Enrolment by Faculty, by Degree and by Gender

	Fall 2007			Fall 2006			Fall 2002			% Change (1 Years)	% Change (5 Years)
	Female	Male	Total	Female	Male	Total	Female	Male	Total		
All Students											
Undergraduate											
Degrees	11,363 (58.9%)	7,917 (41.1%)	19,280	11,291 (59.2%)	7,766 (40.8%)	19,057	10,619 (60.7%)	6,885 (39.3%)	17,504	+1.2	+10.1
Certificates, Diplomas	80 (58.4%)	57 (41.6%)	137	78 (56.5%)	60 (43.5%)	138	98 (54.1%)	83 (45.9%)	181	-0.7	-24.3
Special, Visiting, Other	237 (54.4%)	199 (45.6%)	436	319 (56.9%)	242 (43.1%)	561	297 (53.4%)	259 (46.6%)	556	-22.3	-21.6
Total Undergraduate	11,680 (58.8%)	8,173 (41.2%)	19,853	11,688 (59.2%)	8,068 (40.8%)	19,756	11,014 (60.4%)	7,227 (39.6%)	18,241	+0.5	+8.8
Graduate											
Masters	1,484 (55.8%)	1,176 (44.2%)	2,660	1,467 (53.6%)	1,271 (46.4%)	2,738	1,433 (50.5%)	1,406 (49.5%)	2,839	-2.8	-6.3
Doctoral	1,237 (48.0%)	1,339 (52.0%)	2,576	1,208 (47.7%)	1,327 (52.3%)	2,535	960 (46.9%)	1,088 (53.1%)	2,048	+1.6	+25.8
Total Masters and Doctoral	2,721 (52.0%)	2,515 (48.0%)	5,236	2,675 (50.7%)	2,598 (49.3%)	5,273	2,393 (49.0%)	2,494 (51.0%)	4,887	-0.7	+7.1
Other Graduate											
Certificates, Diplomas	50 (47.2%)	56 (52.8%)	106	65 (48.1%)	70 (51.9%)	135	114 (55.6%)	91 (44.4%)	205	-21.5	-48.3
Special, Visiting, Other	13 (32.5%)	27 (67.5%)	40	20 (48.8%)	21 (51.2%)	41	43 (43.0%)	57 (57.0%)	100	-2.4	-60.0
Total Other Graduate	63 (43.2%)	83 (56.8%)	146	85 (48.3%)	91 (51.7%)	176	157 (51.5%)	148 (48.5%)	305	-17.0	-52.1
Total Graduate	2,784 (51.7%)	2,598 (48.3%)	5,382	2,760 (50.7%)	2,689 (49.3%)	5,449	2,550 (49.1%)	2,642 (50.9%)	5,192	-1.2	+3.7
All Students (Credit)	14,464 (57.3%)	10,771 (42.7%)	25,235	14,448 (57.3%)	10,757 (42.7%)	25,205	13,564 (57.9%)	9,869 (42.1%)	23,433	+0.1	+7.7

Full-Time Enrolment by Faculty, by Degree and by Gender

	Fall 2007			Fall 2006			Fall 2002			% Change (1 Years)	% Change (5 Years)
	Female	Male	Total	Female	Male	Total	Female	Male	Total		
Postdoctoral	208 (42.9%)	277 (57.1%)	485	173 (41.2%)	247 (58.8%)	420	124 (44.0%)	158 (56.0%)	282	+15.5	+72.0
Residents and Fellows	406 (43.1%)	537 (56.9%)	943	371 (40.5%)	544 (59.5%)	915	299 (38.9%)	470 (61.1%)	769	+3.1	+22.6
Other (Non-credit)											
Farm Management Technology	15 (19.0%)	64 (81.0%)	79	15 (19.2%)	63 (80.8%)	78	16 (17.6%)	75 (82.4%)	91	+1.3	-13.2
Continuing Education Unit	0 (0.0%)	0 (0.0%)	0	1 (100.0%)	0 (0.0%)	1	0 (0.0%)	1 (100.0%)	1	-100.0	-100.0
Total Other (Non-credit)	15 (19.0%)	64 (81.0%)	79	16 (20.3%)	63 (79.7%)	79	16 (17.4%)	76 (82.6%)	92	0.0	-14.1
All Students (Total)	15,093 (56.4%)	11,649 (43.6%)	26,742	15,008 (56.4%)	11,611 (43.6%)	26,619	14,003 (57.0%)	10,573 (43.0%)	24,576	+0.5	+8.8

Full-Time Enrolment by Faculty, by Degree and by Gender

	Fall 2007			Fall 2006			Fall 2002			% Change (1 Years)	% Change (5 Years)
	Female	Male	Total	Female	Male	Total	Female	Male	Total		
All Students											
Faculty of Agric Environ Sci	888 (67.1%)	436 (32.9%)	1,324	875 (67.6%)	420 (32.4%)	1,295	589 (60.8%)	379 (39.2%)	968	+2.2	+36.8
Faculty of Arts	4,387 (66.9%)	2,169 (33.1%)	6,556	4,409 (67.0%)	2,171 (33.0%)	6,580	4,689 (66.9%)	2,315 (33.1%)	7,004	-0.4	-6.4
Faculties of Arts and Science	385 (70.3%)	163 (29.7%)	548	344 (70.6%)	143 (29.4%)	487	0 (0.0%)	0 (0.0%)	0	+12.5	-
Centre for Continuing Ed	119 (45.1%)	145 (54.9%)	264	138 (46.9%)	156 (53.1%)	294	238 (50.1%)	237 (49.9%)	475	-10.2	-44.4
Faculty of Dentistry	112 (56.9%)	85 (43.1%)	197	103 (54.2%)	87 (45.8%)	190	88 (56.8%)	67 (43.2%)	155	+3.7	+27.1
Faculty of Education	1,553 (78.8%)	418 (21.2%)	1,971	1,529 (78.9%)	410 (21.1%)	1,939	1,501 (79.9%)	377 (20.1%)	1,878	+1.7	+5.0
Faculty of Engineering	814 (25.5%)	2,382 (74.5%)	3,196	808 (25.9%)	2,317 (74.1%)	3,125	829 (28.9%)	2,037 (71.1%)	2,866	+2.3	+11.5
Faculty of Law	421 (54.5%)	351 (45.5%)	772	418 (54.1%)	355 (45.9%)	773	408 (56.6%)	313 (43.4%)	721	-0.1	+7.1
Faculty of Medicine	2,265 (59.0%)	1,574 (41.0%)	3,839	2,155 (58.7%)	1,515 (41.3%)	3,670	1,597 (54.5%)	1,334 (45.5%)	2,931	+4.6	+31.0
Desautels Faculty Management	1,392 (50.9%)	1,341 (49.1%)	2,733	1,417 (50.8%)	1,375 (49.2%)	2,792	1,179 (49.9%)	1,184 (50.1%)	2,363	-2.1	+15.7
Schulich School of Music	355 (46.6%)	406 (53.4%)	761	381 (47.7%)	417 (52.3%)	798	359 (53.6%)	311 (46.4%)	670	-4.6	+13.6
Faculty of Religious Studies	34 (38.2%)	55 (61.8%)	89	30 (33.7%)	59 (66.3%)	89	31 (37.8%)	51 (62.2%)	82	0.0	+8.5
Faculty of Science	2,368 (52.7%)	2,124 (47.3%)	4,492	2,401 (52.3%)	2,186 (47.7%)	4,587	2,495 (55.9%)	1,968 (44.1%)	4,463	-2.1	+0.6
Total	15,093 (56.4%)	11,649 (43.6%)	26,742	15,008 (56.4%)	11,611 (43.6%)	26,619	14,003 (57.0%)	10,573 (43.0%)	24,576	+0.5	+8.8

Full-Time Enrolment by Faculty, by Degree and by Gender

	Fall 2007			Fall 2006			Fall 2002			% Change (1 Years)	% Change (5 Years)
	Female	Male	Total	Female	Male	Total	Female	Male	Total		
Faculty of Agric Environ Sci											
Undergraduate											
Degrees											
B Eng Bioresource	41 (45.6%)	49 (54.4%)	90	34 (40.5%)	50 (59.5%)	84	0 (0.0%)	0 (0.0%)	0	+7.1	-
B SC (Food Science)	31 (73.8%)	11 (26.2%)	42	24 (82.8%)	5 (17.2%)	29	17 (73.9%)	6 (26.1%)	23	+44.8	+82.6
B SC (Nutritional Science)	295 (92.5%)	24 (7.5%)	319	311 (93.7%)	21 (6.3%)	332	112 (95.7%)	5 (4.3%)	117	-3.9	+172.6
B SC Agric and Environm Sc	273 (69.3%)	121 (30.7%)	394	258 (69.9%)	111 (30.1%)	369	201 (69.3%)	89 (30.7%)	290	+6.8	+35.9
B SC Agricultural Engineering	0 (0.0%)	0 (0.0%)	0	0 (0.0%)	0 (0.0%)	0	15 (44.1%)	19 (55.9%)	34	0.0	-100.0
Freshman (A. & E.S.)	0 (0.0%)	0 (0.0%)	0	0 (0.0%)	0 (0.0%)	0	38 (71.7%)	15 (28.3%)	53	0.0	-100.0
Total Degrees	640 (75.7%)	205 (24.3%)	845	627 (77.0%)	187 (23.0%)	814	383 (74.1%)	134 (25.9%)	517	+3.8	+63.4
Certificates, Diplomas											
Cert in Food Science	3 (100.0%)	0 (0.0%)	3	0 (0.0%)	0 (0.0%)	0	0 (0.0%)	0 (0.0%)	0	-	-
Diploma in Environment	3 (75.0%)	1 (25.0%)	4	5 (83.3%)	1 (16.7%)	6	1 (100.0%)	0 (0.0%)	1	-33.3	+300.0
Total Certificates, Diplomas	6 (85.7%)	1 (14.3%)	7	5 (83.3%)	1 (16.7%)	6	1 (100.0%)	0 (0.0%)	1	+16.7	+600.0
Special, Visiting, Other	13 (72.2%)	5 (27.8%)	18	29 (67.4%)	14 (32.6%)	43	24 (72.7%)	9 (27.3%)	33	-58.1	-45.5
Total Undergraduate	659 (75.7%)	211 (24.3%)	870	661 (76.6%)	202 (23.4%)	863	408 (74.0%)	143 (26.0%)	551	+0.8	+57.9

Full-Time Enrolment by Faculty, by Degree and by Gender

	Fall 2007			Fall 2006			Fall 2002			% Change (1 Years)	% Change (5 Years)
	Female	Male	Total	Female	Male	Total	Female	Male	Total		
Graduate											
Masters											
Master of Science	109 (62.6%)	65 (37.4%)	174	109 (63.4%)	63 (36.6%)	172	99 (61.9%)	61 (38.1%)	160	+1.2	+8.8
Master of Science Applied	25 (67.6%)	12 (32.4%)	37	13 (68.4%)	6 (31.6%)	19	3 (75.0%)	1 (25.0%)	4	+94.7	+825.0
Total Masters	134 (63.5%)	77 (36.5%)	211	122 (63.9%)	69 (36.1%)	191	102 (62.2%)	62 (37.8%)	164	+10.5	+28.7
Doctoral											
Doctor of Philosophy	67 (49.3%)	69 (50.7%)	136	67 (46.9%)	76 (53.1%)	143	54 (39.7%)	82 (60.3%)	136	-4.9	0.0
Total Doctoral	67 (49.3%)	69 (50.7%)	136	67 (46.9%)	76 (53.1%)	143	54 (39.7%)	82 (60.3%)	136	-4.9	0.0
Total Masters and Doctoral	201 (57.9%)	146 (42.1%)	347	189 (56.6%)	145 (43.4%)	334	156 (52.0%)	144 (48.0%)	300	+3.9	+15.7
Other Graduate											
Certificates, Diplomas											
Gr Cert in Biotechnology	2 (100.0%)	0 (0.0%)	2	5 (71.4%)	2 (28.6%)	7	3 (37.5%)	5 (62.5%)	8	-71.4	-75.0
Gr Dip in Reg Diet (R.D.) Cred	1 (100.0%)	0 (0.0%)	1	0 (0.0%)	0 (0.0%)	0	0 (0.0%)	0 (0.0%)	0	-	-
Total Certificates, Diplomas	3 (100.0%)	0 (0.0%)	3	5 (71.4%)	2 (28.6%)	7	3 (37.5%)	5 (62.5%)	8	-57.1	-62.5
Special, Visiting, Other	1 (100.0%)	0 (0.0%)	1	0 (0.0%)	0 (0.0%)	0	0 (0.0%)	0 (0.0%)	0	-	-
Total Other Graduate	4 (100.0%)	0 (0.0%)	4	5 (71.4%)	2 (28.6%)	7	3 (37.5%)	5 (62.5%)	8	-42.9	-50.0
Total Graduate	205 (58.4%)	146 (41.6%)	351	194 (56.9%)	147 (43.1%)	341	159 (51.6%)	149 (48.4%)	308	+2.9	+14.0

Full-Time Enrolment by Faculty, by Degree and by Gender

	Fall 2007			Fall 2006			Fall 2002			% Change (1 Years)	% Change (5 Years)
	Female	Male	Total	Female	Male	Total	Female	Male	Total		
Postdoctoral	9 (37.5%)	15 (62.5%)	24	5 (38.5%)	8 (61.5%)	13	6 (33.3%)	12 (66.7%)	18	+84.6	+33.3
Farm Management Technology	15 (19.0%)	64 (81.0%)	79	15 (19.2%)	63 (80.8%)	78	16 (17.6%)	75 (82.4%)	91	+1.3	-13.2
Total Faculty of Agric Environ Sci	888 (67.1%)	436 (32.9%)	1,324	875 (67.6%)	420 (32.4%)	1,295	589 (60.8%)	379 (39.2%)	968	+2.2	+36.8

Full-Time Enrolment by Faculty, by Degree and by Gender

	Fall 2007			Fall 2006			Fall 2002			% Change (1 Years)	% Change (5 Years)
	Female	Male	Total	Female	Male	Total	Female	Male	Total		
Faculty of Arts											
Undergraduate											
Degrees											
Bachelor of Arts	3,648 (67.1%)	1,792 (32.9%)	5,440	3,620 (67.1%)	1,774 (32.9%)	5,394	3,921 (67.8%)	1,864 (32.2%)	5,785	+0.9	-6.0
Bachelor of Social Work	158 (88.3%)	21 (11.7%)	179	168 (87.5%)	24 (12.5%)	192	175 (86.2%)	28 (13.8%)	203	-6.8	-11.8
Total Degrees	3,806 (67.7%)	1,813 (32.3%)	5,619	3,788 (67.8%)	1,798 (32.2%)	5,586	4,096 (68.4%)	1,892 (31.6%)	5,988	+0.6	-6.2
Certificates, Diplomas											
Diploma in Environment	7 (70.0%)	3 (30.0%)	10	3 (75.0%)	1 (25.0%)	4	5 (83.3%)	1 (16.7%)	6	+150.0	+66.7
Total Certificates, Diplomas	7 (70.0%)	3 (30.0%)	10	3 (75.0%)	1 (25.0%)	4	5 (83.3%)	1 (16.7%)	6	+150.0	+66.7
Special, Visiting, Other	85 (64.9%)	46 (35.1%)	131	120 (66.7%)	60 (33.3%)	180	113 (60.4%)	74 (39.6%)	187	-27.2	-29.9
Total Undergraduate	3,898 (67.7%)	1,862 (32.3%)	5,760	3,911 (67.8%)	1,859 (32.2%)	5,770	4,214 (68.2%)	1,967 (31.8%)	6,181	-0.2	-6.8
Graduate											
Masters											
Master of Arts	163 (62.2%)	99 (37.8%)	262	178 (61.4%)	112 (38.6%)	290	186 (55.0%)	152 (45.0%)	338	-9.7	-22.5
Master of Social Work	56 (91.8%)	5 (8.2%)	61	44 (88.0%)	6 (12.0%)	50	59 (81.9%)	13 (18.1%)	72	+22.0	-15.3
Total Masters	219 (67.8%)	104 (32.2%)	323	222 (65.3%)	118 (34.7%)	340	245 (59.8%)	165 (40.2%)	410	-5.0	-21.2
Doctoral											

Full-Time Enrolment by Faculty, by Degree and by Gender

	Fall 2007			Fall 2006			Fall 2002			% Change (1 Years)	% Change (5 Years)
	Female	Male	Total	Female	Male	Total	Female	Male	Total		
Doctor of Philosophy	253 (56.5%)	195 (43.5%)	448	260 (58.2%)	187 (41.8%)	447	224 (55.3%)	181 (44.7%)	405	+0.2	+10.6
Total Doctoral	253 (56.5%)	195 (43.5%)	448	260 (58.2%)	187 (41.8%)	447	224 (55.3%)	181 (44.7%)	405	+0.2	+10.6
Total Masters and Doctoral	472 (61.2%)	299 (38.8%)	771	482 (61.2%)	305 (38.8%)	787	469 (57.5%)	346 (42.5%)	815	-2.0	-5.4
Other Graduate											
Special, Visiting, Other	0 (0.0%)	1 (100.0%)	1	3 (75.0%)	1 (25.0%)	4	0 (0.0%)	0 (0.0%)	0	-75.0	-
Total Other Graduate	0 (0.0%)	1 (100.0%)	1	3 (75.0%)	1 (25.0%)	4	0 (0.0%)	0 (0.0%)	0	-75.0	-
Total Graduate	472 (61.1%)	300 (38.9%)	772	485 (61.3%)	306 (38.7%)	791	469 (57.5%)	346 (42.5%)	815	-2.4	-5.3
Postdoctoral	17 (70.8%)	7 (29.2%)	24	13 (68.4%)	6 (31.6%)	19	6 (75.0%)	2 (25.0%)	8	+26.3	+200.0
Total Faculty of Arts	4,387 (66.9%)	2,169 (33.1%)	6,556	4,409 (67.0%)	2,171 (33.0%)	6,580	4,689 (66.9%)	2,315 (33.1%)	7,004	-0.4	-6.4

Full-Time Enrolment by Faculty, by Degree and by Gender

	Fall 2007			Fall 2006			Fall 2002			% Change (1 Years)	% Change (5 Years)
	Female	Male	Total	Female	Male	Total	Female	Male	Total		
Faculties of Arts and Science											
Undergraduate											
Degrees											
Bachelor of Arts and Science	385 (70.3%)	163 (29.7%)	548	344 (70.6%)	143 (29.4%)	487	0 (0.0%)	0 (0.0%)	0	+12.5	-
Total Degrees	385 (70.3%)	163 (29.7%)	548	344 (70.6%)	143 (29.4%)	487	0 (0.0%)	0 (0.0%)	0	+12.5	-
Total Undergraduate	385 (70.3%)	163 (29.7%)	548	344 (70.6%)	143 (29.4%)	487	0 (0.0%)	0 (0.0%)	0	+12.5	-
Total Faculties of Arts and Science	385 (70.3%)	163 (29.7%)	548	344 (70.6%)	143 (29.4%)	487	0 (0.0%)	0 (0.0%)	0	+12.5	-

Full-Time Enrolment by Faculty, by Degree and by Gender

	Fall 2007			Fall 2006			Fall 2002			% Change (1 Years)	% Change (5 Years)
	Female	Male	Total	Female	Male	Total	Female	Male	Total		
Centre for Continuing Ed											
Undergraduate											
Certificates, Diplomas											
Cert Prof Engl for Prof Comm	1 (100.0%)	0 (0.0%)	1	1 (100.0%)	0 (0.0%)	1	0 (0.0%)	0 (0.0%)	0	0.0	-
Cert Prof French for Prof Comm	0 (0.0%)	0 (0.0%)	0	0 (0.0%)	1 (100.0%)	1	0 (0.0%)	0 (0.0%)	0	-100.0	0.0
Cert System Analysis & Design	0 (0.0%)	2 (100.0%)	2	0 (0.0%)	0 (0.0%)	0	2 (25.0%)	6 (75.0%)	8	-	-75.0
Cert Transport & Logistics	0 (0.0%)	0 (0.0%)	0	1 (33.3%)	2 (66.7%)	3	1 (33.3%)	2 (66.7%)	3	-100.0	-100.0
Cert in Comp Software Tech	0 (0.0%)	0 (0.0%)	0	0 (0.0%)	0 (0.0%)	0	1 (10.0%)	9 (90.0%)	10	0.0	-100.0
Cert in Health & Soc Serv Mgmt	3 (75.0%)	1 (25.0%)	4	1 (50.0%)	1 (50.0%)	2	0 (0.0%)	0 (0.0%)	0	+100.0	-
Cert in Human Resources Mgmt	6 (85.7%)	1 (14.3%)	7	7 (70.0%)	3 (30.0%)	10	12 (85.7%)	2 (14.3%)	14	-30.0	-50.0
Cert in Logistics Management	2 (100.0%)	0 (0.0%)	2	0 (0.0%)	0 (0.0%)	0	0 (0.0%)	0 (0.0%)	0	-	-
Cert in Public Relations	4 (80.0%)	1 (20.0%)	5	0 (0.0%)	0 (0.0%)	0	0 (0.0%)	0 (0.0%)	0	-	-
Cert in Public Relations Mgmt	1 (50.0%)	1 (50.0%)	2	5 (83.3%)	1 (16.7%)	6	10 (71.4%)	4 (28.6%)	14	-66.7	-85.7
Cert in Software Development	0 (0.0%)	0 (0.0%)	0	0 (0.0%)	1 (100.0%)	1	0 (0.0%)	0 (0.0%)	0	-100.0	0.0

Full-Time Enrolment by Faculty, by Degree and by Gender

	Fall 2007			Fall 2006			Fall 2002			% Change (1 Years)	% Change (5 Years)
	Female	Male	Total	Female	Male	Total	Female	Male	Total		
Certificate in Accounting	7 (43.8%)	9 (56.3%)	16	6 (60.0%)	4 (40.0%)	10	1 (50.0%)	1 (50.0%)	2	+60.0	+700.0
Certificate in Management	14 (37.8%)	23 (62.2%)	37	19 (35.2%)	35 (64.8%)	54	28 (43.8%)	36 (56.3%)	64	-31.5	-42.2
Certificate in Marketing	2 (40.0%)	3 (60.0%)	5	3 (60.0%)	2 (40.0%)	5	5 (55.6%)	4 (44.4%)	9	0.0	-44.4
Certificate in Risk Management	1 (50.0%)	1 (50.0%)	2	1 (50.0%)	1 (50.0%)	2	0 (0.0%)	2 (100.0%)	2	0.0	0.0
Certificate in Translation	14 (63.6%)	8 (36.4%)	22	11 (91.7%)	1 (8.3%)	12	8 (72.7%)	3 (27.3%)	11	+83.3	+100.0
Diploma in Accounting	0 (0.0%)	0 (0.0%)	0	0 (0.0%)	0 (0.0%)	0	1 (100.0%)	0 (0.0%)	1	0.0	-100.0
Total Certificates, Diplomas	55 (52.4%)	50 (47.6%)	105	55 (51.4%)	52 (48.6%)	107	69 (50.0%)	69 (50.0%)	138	-1.9	-23.9
Special, Visiting, Other	18 (30.0%)	42 (70.0%)	60	23 (37.7%)	38 (62.3%)	61	39 (37.9%)	64 (62.1%)	103	-1.6	-41.7
Total Undergraduate	73 (44.2%)	92 (55.8%)	165	78 (46.4%)	90 (53.6%)	168	108 (44.8%)	133 (55.2%)	241	-1.8	-31.5
Graduate											
Other Graduate											
Certificates, Diplomas											
Dip in Information Technology	0 (0.0%)	0 (0.0%)	0	0 (0.0%)	1 (100.0%)	1	0 (0.0%)	0 (0.0%)	0	-100.0	0.0
Diploma in Accounting	17 (51.5%)	16 (48.5%)	33	26 (48.1%)	28 (51.9%)	54	58 (66.7%)	29 (33.3%)	87	-38.9	-62.1

Full-Time Enrolment by Faculty, by Degree and by Gender

	Fall 2007			Fall 2006			Fall 2002			% Change (1 Years)	% Change (5 Years)
	Female	Male	Total	Female	Male	Total	Female	Male	Total		
Diploma in Management	22 (46.8%)	25 (53.2%)	47	19 (38.8%)	30 (61.2%)	49	41 (49.4%)	42 (50.6%)	83	-4.1	-43.4
Gr Dip in Pub Relations Mgmt	1 (100.0%)	0 (0.0%)	1	0 (0.0%)	0 (0.0%)	0	0 (0.0%)	0 (0.0%)	0	-	-
Grad Cert in Operations Mgmt	1 (33.3%)	2 (66.7%)	3	0 (0.0%)	0 (0.0%)	0	0 (0.0%)	0 (0.0%)	0	-	-
Grad Cert in Treasury/Finance	0 (0.0%)	1 (100.0%)	1	1 (100.0%)	0 (0.0%)	1	2 (100.0%)	0 (0.0%)	2	0.0	-50.0
Grad Dip in Translation	1 (100.0%)	0 (0.0%)	1	4 (80.0%)	1 (20.0%)	5	0 (0.0%)	0 (0.0%)	0	-80.0	-
Graduate Cert in E-Business	0 (0.0%)	1 (100.0%)	1	0 (0.0%)	0 (0.0%)	0	0 (0.0%)	0 (0.0%)	0	-	-
Graduate Cert in E-Commerce	0 (0.0%)	0 (0.0%)	0	0 (0.0%)	0 (0.0%)	0	2 (50.0%)	2 (50.0%)	4	0.0	-100.0
Graduate Cert in Intl Business	0 (0.0%)	1 (100.0%)	1	1 (100.0%)	0 (0.0%)	1	1 (100.0%)	0 (0.0%)	1	0.0	0.0
Graduate Cert in Leadership	0 (0.0%)	0 (0.0%)	0	0 (0.0%)	0 (0.0%)	0	0 (0.0%)	1 (100.0%)	1	0.0	-100.0
Graduate Cert in Marketing	0 (0.0%)	0 (0.0%)	0	1 (100.0%)	0 (0.0%)	1	1 (100.0%)	0 (0.0%)	1	-100.0	-100.0
Graduate Cert in Taxation	0 (0.0%)	1 (100.0%)	1	1 (100.0%)	0 (0.0%)	1	0 (0.0%)	0 (0.0%)	0	0.0	-
Total Certificates, Diplomas	42 (47.2%)	47 (52.8%)	89	53 (46.9%)	60 (53.1%)	113	105 (58.7%)	74 (41.3%)	179	-21.2	-50.3
Special, Visiting, Other	4 (40.0%)	6 (60.0%)	10	6 (50.0%)	6 (50.0%)	12	25 (46.3%)	29 (53.7%)	54	-16.7	-81.5
Total Other Graduate	46 (46.5%)	53 (53.5%)	99	59 (47.2%)	66 (52.8%)	125	130 (55.8%)	103 (44.2%)	233	-20.8	-57.5
Total Graduate	46 (46.5%)	53 (53.5%)	99	59 (47.2%)	66 (52.8%)	125	130 (55.8%)	103 (44.2%)	233	-20.8	-57.5

Full-Time Enrolment by Faculty, by Degree and by Gender

	Fall 2007			Fall 2006			Fall 2002			% Change (1 Years)	% Change (5 Years)
	Female	Male	Total	Female	Male	Total	Female	Male	Total		
Other (Non-credit)											
Continuing Education Unit											
Cert Proficiency in French	0 (0.0%)	0 (0.0%)	0	0 (0.0%)	0 (0.0%)	0	0 (0.0%)	1 (100.0%)	1	0.0	-100.0
Cert Proficiency in Spanish	0 (0.0%)	0 (0.0%)	0	1 (100.0%)	0 (0.0%)	1	0 (0.0%)	0 (0.0%)	0	-100.0	0.0
Total Continuing Education Unit	0 (0.0%)	0 (0.0%)	0	1 (100.0%)	0 (0.0%)	1	0 (0.0%)	1 (100.0%)	1	-100.0	-100.0
Total Other (Non-credit)	0 (0.0%)	0 (0.0%)	0	1 (100.0%)	0 (0.0%)	1	0 (0.0%)	1 (100.0%)	1	-100.0	-100.0
Total Centre for Continuing Ed	119 (45.1%)	145 (54.9%)	264	138 (46.9%)	156 (53.1%)	294	238 (50.1%)	237 (49.9%)	475	-10.2	-44.4

Full-Time Enrolment by Faculty, by Degree and by Gender

	Fall 2007			Fall 2006			Fall 2002			% Change (1 Years)	% Change (5 Years)
	Female	Male	Total	Female	Male	Total	Female	Male	Total		
Faculty of Dentistry											
Undergraduate											
Degrees											
D M D	76 (60.8%)	49 (39.2%)	125	75 (59.5%)	51 (40.5%)	126	66 (56.4%)	51 (43.6%)	117	-0.8	+6.8
Total Degrees	76 (60.8%)	49 (39.2%)	125	75 (59.5%)	51 (40.5%)	126	66 (56.4%)	51 (43.6%)	117	-0.8	+6.8
Total Undergraduate	76 (60.8%)	49 (39.2%)	125	75 (59.5%)	51 (40.5%)	126	66 (56.4%)	51 (43.6%)	117	-0.8	+6.8
Graduate											
Masters											
Master of Science	8 (61.5%)	5 (38.5%)	13	8 (53.3%)	7 (46.7%)	15	6 (54.5%)	5 (45.5%)	11	-13.3	+18.2
Total Masters	8 (61.5%)	5 (38.5%)	13	8 (53.3%)	7 (46.7%)	15	6 (54.5%)	5 (45.5%)	11	-13.3	+18.2
Doctoral											
Doctor of Philosophy	6 (40.0%)	9 (60.0%)	15	4 (36.4%)	7 (63.6%)	11	1 (50.0%)	1 (50.0%)	2	+36.4	+650.0
Total Doctoral	6 (40.0%)	9 (60.0%)	15	4 (36.4%)	7 (63.6%)	11	1 (50.0%)	1 (50.0%)	2	+36.4	+650.0
Total Masters and Doctoral	14 (50.0%)	14 (50.0%)	28	12 (46.2%)	14 (53.8%)	26	7 (53.8%)	6 (46.2%)	13	+7.7	+115.4
Other Graduate											
Special, Visiting, Other	0 (0.0%)	0 (0.0%)	0	1 (100.0%)	0 (0.0%)	1	0 (0.0%)	0 (0.0%)	0	-100.0	0.0
Total Other Graduate	0 (0.0%)	0 (0.0%)	0	1 (100.0%)	0 (0.0%)	1	0 (0.0%)	0 (0.0%)	0	-100.0	0.0
Total Graduate	14 (50.0%)	14 (50.0%)	28	13 (48.1%)	14 (51.9%)	27	7 (53.8%)	6 (46.2%)	13	+3.7	+115.4

Full-Time Enrolment by Faculty, by Degree and by Gender

	Fall 2007			Fall 2006			Fall 2002			% Change (1 Years)	% Change (5 Years)
	Female	Male	Total	Female	Male	Total	Female	Male	Total		
Postdoctoral	7 (46.7%)	8 (53.3%)	15	3 (37.5%)	5 (62.5%)	8	1 (50.0%)	1 (50.0%)	2	+87.5	+650.0
Residents and Fellows											
Dental Resident	15 (51.7%)	14 (48.3%)	29	12 (41.4%)	17 (58.6%)	29	14 (60.9%)	9 (39.1%)	23	0.0	+26.1
Total Residents and Fellows	15 (51.7%)	14 (48.3%)	29	12 (41.4%)	17 (58.6%)	29	14 (60.9%)	9 (39.1%)	23	0.0	+26.1
Total Faculty of Dentistry	112 (56.9%)	85 (43.1%)	197	103 (54.2%)	87 (45.8%)	190	88 (56.8%)	67 (43.2%)	155	+3.7	+27.1

Full-Time Enrolment by Faculty, by Degree and by Gender

	Fall 2007			Fall 2006			Fall 2002			% Change (1 Years)	% Change (5 Years)
	Female	Male	Total	Female	Male	Total	Female	Male	Total		
Faculty of Education											
Undergraduate											
Degrees											
B Ed Vocational Education	0 (0.0%)	0 (0.0%)	0	1 (100.0%)	0 (0.0%)	1	0 (0.0%)	0 (0.0%)	0	-100.0	0.0
B Ed for Certified Teachers	1 (100.0%)	0 (0.0%)	1	2 (100.0%)	0 (0.0%)	2	0 (0.0%)	1 (100.0%)	1	-50.0	0.0
B SC (Kinesiology)	98 (63.6%)	56 (36.4%)	154	80 (64.0%)	45 (36.0%)	125	0 (0.0%)	0 (0.0%)	0	+23.2	-
Bachelor of Education	1,035 (80.7%)	247 (19.3%)	1,282	1,024 (80.3%)	252 (19.7%)	1,276	1,129 (81.8%)	252 (18.2%)	1,381	+0.5	-7.2
Total Degrees	1,134 (78.9%)	303 (21.1%)	1,437	1,107 (78.8%)	297 (21.2%)	1,404	1,129 (81.7%)	253 (18.3%)	1,382	+2.4	+4.0
Certificates, Diplomas											
Cert Ed 1st Nations & Inuit	0 (0.0%)	0 (0.0%)	0	4 (100.0%)	0 (0.0%)	4	1 (100.0%)	0 (0.0%)	1	-100.0	-100.0
Cert Inclusive Education	2 (100.0%)	0 (0.0%)	2	0 (0.0%)	0 (0.0%)	0	2 (50.0%)	2 (50.0%)	4	-	-50.0
Dip Human Rel & Family Life Ed	3 (100.0%)	0 (0.0%)	3	3 (100.0%)	0 (0.0%)	3	3 (75.0%)	1 (25.0%)	4	0.0	-25.0
Total Certificates, Diplomas	5 (100.0%)	0 (0.0%)	5	7 (100.0%)	0 (0.0%)	7	6 (66.7%)	3 (33.3%)	9	-28.6	-44.4
Special, Visiting, Other	2 (50.0%)	2 (50.0%)	4	6 (75.0%)	2 (25.0%)	8	6 (60.0%)	4 (40.0%)	10	-50.0	-60.0
Total Undergraduate	1,141 (78.9%)	305 (21.1%)	1,446	1,120 (78.9%)	299 (21.1%)	1,419	1,141 (81.4%)	260 (18.6%)	1,401	+1.9	+3.2
Graduate											

Full-Time Enrolment by Faculty, by Degree and by Gender

	Fall 2007			Fall 2006			Fall 2002			% Change (1 Years)	% Change (5 Years)
	Female	Male	Total	Female	Male	Total	Female	Male	Total		
Masters											
Master of Arts	123 (82.6%)	26 (17.4%)	149	125 (83.9%)	24 (16.1%)	149	107 (78.7%)	29 (21.3%)	136	0.0	+9.6
Master of Education	26 (89.7%)	3 (10.3%)	29	28 (96.6%)	1 (3.4%)	29	24 (85.7%)	4 (14.3%)	28	0.0	+3.6
Master of Library & Info St	87 (75.0%)	29 (25.0%)	116	90 (73.2%)	33 (26.8%)	123	97 (71.9%)	38 (28.1%)	135	-5.7	-14.1
Master of Science	12 (60.0%)	8 (40.0%)	20	9 (60.0%)	6 (40.0%)	15	6 (85.7%)	1 (14.3%)	7	+33.3	+185.7
Total Masters	248 (79.0%)	66 (21.0%)	314	252 (79.7%)	64 (20.3%)	316	234 (76.5%)	72 (23.5%)	306	-0.6	+2.6
Doctoral											
Doctor of Philosophy	163 (78.0%)	46 (22.0%)	209	156 (77.2%)	46 (22.8%)	202	126 (74.1%)	44 (25.9%)	170	+3.5	+22.9
Total Doctoral	163 (78.0%)	46 (22.0%)	209	156 (77.2%)	46 (22.8%)	202	126 (74.1%)	44 (25.9%)	170	+3.5	+22.9
Total Masters and Doctoral	411 (78.6%)	112 (21.4%)	523	408 (78.8%)	110 (21.2%)	518	360 (75.6%)	116 (24.4%)	476	+1.0	+9.9
Other Graduate											
Certificates, Diplomas											
Gr Cert Educational Leadersh 2	1 (100.0%)	0 (0.0%)	1	0 (0.0%)	0 (0.0%)	0	0 (0.0%)	0 (0.0%)	0	-	-
Gr Dip in Library & Info St	0 (0.0%)	1 (100.0%)	1	0 (0.0%)	0 (0.0%)	0	0 (0.0%)	0 (0.0%)	0	-	-
Total Certificates, Diplomas	1 (50.0%)	1 (50.0%)	2	0 (0.0%)	0 (0.0%)	0	0 (0.0%)	0 (0.0%)	0	-	-
Total Other Graduate	1 (50.0%)	1 (50.0%)	2	0 (0.0%)	0 (0.0%)	0	0 (0.0%)	0 (0.0%)	0	-	-
Total Graduate	412 (78.5%)	113 (21.5%)	525	408 (78.8%)	110 (21.2%)	518	360 (75.6%)	116 (24.4%)	476	+1.4	+10.3

Full-Time Enrolment by Faculty, by Degree and by Gender

	Fall 2007			Fall 2006			Fall 2002			% Change (1 Years)	% Change (5 Years)
	Female	Male	Total	Female	Male	Total	Female	Male	Total		
Postdoctoral	0 (0.0%)	0 (0.0%)	0	1 (50.0%)	1 (50.0%)	2	0 (0.0%)	1 (100.0%)	1	-100.0	-100.0
Total Faculty of Education	1,553 (78.8%)	418 (21.2%)	1,971	1,529 (78.9%)	410 (21.1%)	1,939	1,501 (79.9%)	377 (20.1%)	1,878	+1.7	+5.0

Full-Time Enrolment by Faculty, by Degree and by Gender

	Fall 2007			Fall 2006			Fall 2002			% Change (1 Years)	% Change (5 Years)
	Female	Male	Total	Female	Male	Total	Female	Male	Total		
Faculty of Engineering											
Undergraduate											
Degrees											
Bachelor of Engineering	449 (21.0%)	1,686 (79.0%)	2,135	449 (22.1%)	1,584 (77.9%)	2,033	493 (26.4%)	1,376 (73.6%)	1,869	+5.0	+14.2
Bachelor of Science (Arch)	114 (67.1%)	56 (32.9%)	170	107 (69.5%)	47 (30.5%)	154	108 (69.7%)	47 (30.3%)	155	+10.4	+9.7
Bachelor of Software Engr	23 (24.5%)	71 (75.5%)	94	20 (18.2%)	90 (81.8%)	110	5 (27.8%)	13 (72.2%)	18	-14.5	+422.2
Total Degrees	586 (24.4%)	1,813 (75.6%)	2,399	576 (25.1%)	1,721 (74.9%)	2,297	606 (29.7%)	1,436 (70.3%)	2,042	+4.4	+17.5
Special, Visiting, Other	18 (37.5%)	30 (62.5%)	48	19 (30.6%)	43 (69.4%)	62	15 (33.3%)	30 (66.7%)	45	-22.6	+6.7
Total Undergraduate	604 (24.7%)	1,843 (75.3%)	2,447	595 (25.2%)	1,764 (74.8%)	2,359	621 (29.8%)	1,466 (70.2%)	2,087	+3.7	+17.2
Graduate											
Masters											
Master of Architecture	41 (59.4%)	28 (40.6%)	69	52 (62.7%)	31 (37.3%)	83	46 (48.9%)	48 (51.1%)	94	-16.9	-26.6
Master of Engineering	63 (23.4%)	206 (76.6%)	269	68 (24.6%)	208 (75.4%)	276	78 (22.3%)	272 (77.7%)	350	-2.5	-23.1
Master of Science	1 (100.0%)	0 (0.0%)	1	3 (50.0%)	3 (50.0%)	6	0 (0.0%)	5 (100.0%)	5	-83.3	-80.0
Master of Urban Planning	22 (53.7%)	19 (46.3%)	41	16 (45.7%)	19 (54.3%)	35	21 (52.5%)	19 (47.5%)	40	+17.1	+2.5
Total Masters	127 (33.4%)	253 (66.6%)	380	139 (34.8%)	261 (65.3%)	400	145 (29.7%)	344 (70.3%)	489	-5.0	-22.3

Full-Time Enrolment by Faculty, by Degree and by Gender

	Fall 2007			Fall 2006			Fall 2002			% Change (1 Years)	% Change (5 Years)
	Female	Male	Total	Female	Male	Total	Female	Male	Total		
Doctoral											
Doctor of Philosophy	75 (22.0%)	266 (78.0%)	341	72 (20.7%)	276 (79.3%)	348	50 (19.5%)	206 (80.5%)	256	-2.0	+33.2
Total Doctoral	75 (22.0%)	266 (78.0%)	341	72 (20.7%)	276 (79.3%)	348	50 (19.5%)	206 (80.5%)	256	-2.0	+33.2
Total Masters and Doctoral	202 (28.0%)	519 (72.0%)	721	211 (28.2%)	537 (71.8%)	748	195 (26.2%)	550 (73.8%)	745	-3.6	-3.2
Other Graduate											
Special, Visiting, Other	0 (0.0%)	2 (100.0%)	2	0 (0.0%)	1 (100.0%)	1	8 (47.1%)	9 (52.9%)	17	+100.0	-88.2
Total Other Graduate	0 (0.0%)	2 (100.0%)	2	0 (0.0%)	1 (100.0%)	1	8 (47.1%)	9 (52.9%)	17	+100.0	-88.2
Total Graduate	202 (27.9%)	521 (72.1%)	723	211 (28.2%)	538 (71.8%)	749	203 (26.6%)	559 (73.4%)	762	-3.5	-5.1
Postdoctoral	8 (30.8%)	18 (69.2%)	26	2 (11.8%)	15 (88.2%)	17	5 (29.4%)	12 (70.6%)	17	+52.9	+52.9
Total Faculty of Engineering	814 (25.5%)	2,382 (74.5%)	3,196	808 (25.9%)	2,317 (74.1%)	3,125	829 (28.9%)	2,037 (71.1%)	2,866	+2.3	+11.5

Full-Time Enrolment by Faculty, by Degree and by Gender

	Fall 2007			Fall 2006			Fall 2002			% Change (1 Years)	% Change (5 Years)
	Female	Male	Total	Female	Male	Total	Female	Male	Total		
Faculty of Law											
Undergraduate											
Degrees											
Bach of Civil Law Bach of Laws	335 (55.4%)	270 (44.6%)	605	335 (54.9%)	275 (45.1%)	610	315 (59.1%)	218 (40.9%)	533	-0.8	+13.5
Total Degrees	335 (55.4%)	270 (44.6%)	605	335 (54.9%)	275 (45.1%)	610	315 (59.1%)	218 (40.9%)	533	-0.8	+13.5
Special, Visiting, Other	19 (65.5%)	10 (34.5%)	29	23 (54.8%)	19 (45.2%)	42	20 (80.0%)	5 (20.0%)	25	-31.0	+16.0
Total Undergraduate	354 (55.8%)	280 (44.2%)	634	358 (54.9%)	294 (45.1%)	652	335 (60.0%)	223 (40.0%)	558	-2.8	+13.6
Graduate											
Masters											
Master of Laws	42 (50.0%)	42 (50.0%)	84	44 (51.8%)	41 (48.2%)	85	63 (48.5%)	67 (51.5%)	130	-1.2	-35.4
Total Masters	42 (50.0%)	42 (50.0%)	84	44 (51.8%)	41 (48.2%)	85	63 (48.5%)	67 (51.5%)	130	-1.2	-35.4
Doctoral											
Doctor of Civil Law	23 (47.9%)	25 (52.1%)	48	15 (44.1%)	19 (55.9%)	34	10 (37.0%)	17 (63.0%)	27	+41.2	+77.8
Total Doctoral	23 (47.9%)	25 (52.1%)	48	15 (44.1%)	19 (55.9%)	34	10 (37.0%)	17 (63.0%)	27	+41.2	+77.8
Total Masters and Doctoral	65 (49.2%)	67 (50.8%)	132	59 (49.6%)	60 (50.4%)	119	73 (46.5%)	84 (53.5%)	157	+10.9	-15.9
Other Graduate											
Certificates, Diplomas											

Full-Time Enrolment by Faculty, by Degree and by Gender

	Fall 2007			Fall 2006			Fall 2002			% Change (1 Years)	% Change (5 Years)
	Female	Male	Total	Female	Male	Total	Female	Male	Total		
Gr Cert Air and Space Law	1 (25.0%)	3 (75.0%)	4	0 (0.0%)	1 (100.0%)	1	0 (0.0%)	5 (100.0%)	5	+300.0	-20.0
Total Certificates, Diplomas	1 (25.0%)	3 (75.0%)	4	0 (0.0%)	1 (100.0%)	1	0 (0.0%)	5 (100.0%)	5	+300.0	-20.0
Total Other Graduate	1 (25.0%)	3 (75.0%)	4	0 (0.0%)	1 (100.0%)	1	0 (0.0%)	5 (100.0%)	5	+300.0	-20.0
Total Graduate	66 (48.5%)	70 (51.5%)	136	59 (49.2%)	61 (50.8%)	120	73 (45.1%)	89 (54.9%)	162	+13.3	-16.0
Postdoctoral	1 (50.0%)	1 (50.0%)	2	1 (100.0%)	0 (0.0%)	1	0 (0.0%)	1 (100.0%)	1	+100.0	+100.0
Total Faculty of Law	421 (54.5%)	351 (45.5%)	772	418 (54.1%)	355 (45.9%)	773	408 (56.6%)	313 (43.4%)	721	-0.1	+7.1

Full-Time Enrolment by Faculty, by Degree and by Gender

	Fall 2007			Fall 2006			Fall 2002			% Change (1 Years)	% Change (5 Years)
	Female	Male	Total	Female	Male	Total	Female	Male	Total		
Faculty of Medicine											
Undergraduate											
Degrees											
B SC (Occ Ther-Non Practing)	38 (80.9%)	9 (19.1%)	47	0 (0.0%)	0 (0.0%)	0	0 (0.0%)	0 (0.0%)	0	-	-
B SC (Occupational Therapy)	98 (89.9%)	11 (10.1%)	109	140 (89.7%)	16 (10.3%)	156	115 (84.6%)	21 (15.4%)	136	-30.1	-19.9
B SC (Phy Ther-Non Practicing)	51 (77.3%)	15 (22.7%)	66	0 (0.0%)	0 (0.0%)	0	0 (0.0%)	0 (0.0%)	0	-	-
B SC (Physical Therapy)	81 (78.6%)	22 (21.4%)	103	112 (71.8%)	44 (28.2%)	156	122 (79.7%)	31 (20.3%)	153	-34.0	-32.7
Bachelor of Nursing	108 (94.7%)	6 (5.3%)	114	111 (94.9%)	6 (5.1%)	117	6 (85.7%)	1 (14.3%)	7	-2.6	-
Bachelor of Science (Nursing)	165 (91.2%)	16 (8.8%)	181	151 (89.9%)	17 (10.1%)	168	116 (94.3%)	7 (5.7%)	123	+7.7	+47.2
MDCM	380 (55.2%)	308 (44.8%)	688	386 (58.0%)	280 (42.0%)	666	251 (46.5%)	289 (53.5%)	540	+3.3	+27.4
Total Degrees	921 (70.4%)	387 (29.6%)	1,308	900 (71.3%)	363 (28.7%)	1,263	610 (63.6%)	349 (36.4%)	959	+3.6	+36.4
Special, Visiting, Other	1 (50.0%)	1 (50.0%)	2	2 (100.0%)	0 (0.0%)	2	2 (100.0%)	0 (0.0%)	2	0.0	0.0
Total Undergraduate	922 (70.4%)	388 (29.6%)	1,310	902 (71.3%)	363 (28.7%)	1,265	612 (63.7%)	349 (36.3%)	961	+3.6	+36.3
Graduate											
Masters											

Full-Time Enrolment by Faculty, by Degree and by Gender

	Fall 2007			Fall 2006			Fall 2002			% Change (1 Years)	% Change (5 Years)
	Female	Male	Total	Female	Male	Total	Female	Male	Total		
Master of Engineering	10 (47.6%)	11 (52.4%)	21	6 (25.0%)	18 (75.0%)	24	15 (53.6%)	13 (46.4%)	28	-12.5	-25.0
Master of Science	288 (61.7%)	179 (38.3%)	467	282 (62.8%)	167 (37.2%)	449	247 (59.5%)	168 (40.5%)	415	+4.0	+12.5
Master of Science Applied	130 (85.5%)	22 (14.5%)	152	110 (88.7%)	14 (11.3%)	124	43 (91.5%)	4 (8.5%)	47	+22.6	+223.4
Total Masters	428 (66.9%)	212 (33.1%)	640	398 (66.7%)	199 (33.3%)	597	305 (62.2%)	185 (37.8%)	490	+7.2	+30.6
Doctoral											
Doctor of Philosophy	385 (56.7%)	294 (43.3%)	679	370 (57.2%)	277 (42.8%)	647	305 (54.1%)	259 (45.9%)	564	+4.9	+20.4
Total Doctoral	385 (56.7%)	294 (43.3%)	679	370 (57.2%)	277 (42.8%)	647	305 (54.1%)	259 (45.9%)	564	+4.9	+20.4
Total Masters and Doctoral	813 (61.6%)	506 (38.4%)	1,319	768 (61.7%)	476 (38.3%)	1,244	610 (57.9%)	444 (42.1%)	1,054	+6.0	+25.1
Other Graduate											
Certificates, Diplomas											
Gr Dip in Clinical Research	2 (66.7%)	1 (33.3%)	3	4 (57.1%)	3 (42.9%)	7	1 (100.0%)	0 (0.0%)	1	-57.1	+200.0
Gr Dip in Epidemiol & Health	0 (0.0%)	0 (0.0%)	0	0 (0.0%)	0 (0.0%)	0	0 (0.0%)	1 (100.0%)	1	0.0	-100.0
Total Certificates, Diplomas	2 (66.7%)	1 (33.3%)	3	4 (57.1%)	3 (42.9%)	7	1 (50.0%)	1 (50.0%)	2	-57.1	+50.0
Special, Visiting, Other	1 (33.3%)	2 (66.7%)	3	2 (50.0%)	2 (50.0%)	4	1 (100.0%)	0 (0.0%)	1	-25.0	+200.0
Total Other Graduate	3 (50.0%)	3 (50.0%)	6	6 (54.5%)	5 (45.5%)	11	2 (66.7%)	1 (33.3%)	3	-45.5	+100.0
Total Graduate	816 (61.6%)	509 (38.4%)	1,325	774 (61.7%)	481 (38.3%)	1,255	612 (57.9%)	445 (42.1%)	1,057	+5.6	+25.4

Full-Time Enrolment by Faculty, by Degree and by Gender

	Fall 2007			Fall 2006			Fall 2002			% Change (1 Years)	% Change (5 Years)
	Female	Male	Total	Female	Male	Total	Female	Male	Total		
Postdoctoral	136 (46.9%)	154 (53.1%)	290	120 (45.5%)	144 (54.5%)	264	88 (52.7%)	79 (47.3%)	167	+9.8	+73.7
Residents and Fellows											
Clinical Fellow	92 (29.3%)	222 (70.7%)	314	81 (26.8%)	221 (73.2%)	302	68 (29.2%)	165 (70.8%)	233	+4.0	+34.8
Clinical/Research Fellow	2 (28.6%)	5 (71.4%)	7	0 (0.0%)	3 (100.0%)	3	0 (0.0%)	2 (100.0%)	2	+133.3	+250.0
Medical Resident	297 (50.1%)	296 (49.9%)	593	278 (47.8%)	303 (52.2%)	581	217 (42.5%)	294 (57.5%)	511	+2.1	+16.0
Total Residents and Fellows	391 (42.8%)	523 (57.2%)	914	359 (40.5%)	527 (59.5%)	886	285 (38.2%)	461 (61.8%)	746	+3.2	+22.5
Total Faculty of Medicine	2,265 (59.0%)	1,574 (41.0%)	3,839	2,155 (58.7%)	1,515 (41.3%)	3,670	1,597 (54.5%)	1,334 (45.5%)	2,931	+4.6	+31.0

Full-Time Enrolment by Faculty, by Degree and by Gender

	Fall 2007			Fall 2006			Fall 2002			% Change (1 Years)	% Change (5 Years)
	Female	Male	Total	Female	Male	Total	Female	Male	Total		
Desautels Faculty Management											
Undergraduate											
Degrees											
Bachelor of Commerce	1,253 (52.9%)	1,117 (47.1%)	2,370	1,248 (53.2%)	1,100 (46.8%)	2,348	998 (53.1%)	881 (46.9%)	1,879	+0.9	+26.1
Total Degrees	1,253 (52.9%)	1,117 (47.1%)	2,370	1,248 (53.2%)	1,100 (46.8%)	2,348	998 (53.1%)	881 (46.9%)	1,879	+0.9	+26.1
Special, Visiting, Other	31 (47.0%)	35 (53.0%)	66	57 (61.3%)	36 (38.7%)	93	27 (57.4%)	20 (42.6%)	47	-29.0	+40.4
Total Undergraduate	1,284 (52.7%)	1,152 (47.3%)	2,436	1,305 (53.5%)	1,136 (46.5%)	2,441	1,025 (53.2%)	901 (46.8%)	1,926	-0.2	+26.5
Graduate											
Masters											
Master of Business Admin	69 (37.7%)	114 (62.3%)	183	72 (30.5%)	164 (69.5%)	236	89 (30.6%)	202 (69.4%)	291	-22.5	-37.1
Master of Management	4 (40.0%)	6 (60.0%)	10	3 (25.0%)	9 (75.0%)	12	29 (52.7%)	26 (47.3%)	55	-16.7	-81.8
Total Masters	73 (37.8%)	120 (62.2%)	193	75 (30.2%)	173 (69.8%)	248	118 (34.1%)	228 (65.9%)	346	-22.2	-44.2
Doctoral											
Doctor of Philosophy	29 (36.7%)	50 (63.3%)	79	28 (35.4%)	51 (64.6%)	79	22 (41.5%)	31 (58.5%)	53	0.0	+49.1
Total Doctoral	29 (36.7%)	50 (63.3%)	79	28 (35.4%)	51 (64.6%)	79	22 (41.5%)	31 (58.5%)	53	0.0	+49.1
Total Masters and Doctoral	102 (37.5%)	170 (62.5%)	272	103 (31.5%)	224 (68.5%)	327	140 (35.1%)	259 (64.9%)	399	-16.8	-31.8
Other Graduate											
Certificates, Diplomas											

Full-Time Enrolment by Faculty, by Degree and by Gender

	Fall 2007			Fall 2006			Fall 2002			% Change (1 Years)	% Change (5 Years)
	Female	Male	Total	Female	Male	Total	Female	Male	Total		
Gr Dip in Public Accountancy	1 (25.0%)	3 (75.0%)	4	2 (66.7%)	1 (33.3%)	3	1 (33.3%)	2 (66.7%)	3	+33.3	+33.3
Post MBA Gr Cert	0 (0.0%)	1 (100.0%)	1	1 (25.0%)	3 (75.0%)	4	4 (50.0%)	4 (50.0%)	8	-75.0	-87.5
Total Certificates, Diplomas	1 (20.0%)	4 (80.0%)	5	3 (42.9%)	4 (57.1%)	7	5 (45.5%)	6 (54.5%)	11	-28.6	-54.5
Special, Visiting, Other	4 (22.2%)	14 (77.8%)	18	5 (33.3%)	10 (66.7%)	15	8 (30.8%)	18 (69.2%)	26	+20.0	-30.8
Total Other Graduate	5 (21.7%)	18 (78.3%)	23	8 (36.4%)	14 (63.6%)	22	13 (35.1%)	24 (64.9%)	37	+4.5	-37.8
Total Graduate	107 (36.3%)	188 (63.7%)	295	111 (31.8%)	238 (68.2%)	349	153 (35.1%)	283 (64.9%)	436	-15.5	-32.3
Postdoctoral	1 (50.0%)	1 (50.0%)	2	1 (50.0%)	1 (50.0%)	2	1 (100.0%)	0 (0.0%)	1	0.0	+100.0
Total Desautels Faculty Management	1,392 (50.9%)	1,341 (49.1%)	2,733	1,417 (50.8%)	1,375 (49.2%)	2,792	1,179 (49.9%)	1,184 (50.1%)	2,363	-2.1	+15.7

Full-Time Enrolment by Faculty, by Degree and by Gender

	Fall 2007			Fall 2006			Fall 2002			% Change (1 Years)	% Change (5 Years)
	Female	Male	Total	Female	Male	Total	Female	Male	Total		
Schulich School of Music											
Undergraduate											
Degrees											
Bachelor of Music	219 (47.7%)	240 (52.3%)	459	249 (49.1%)	258 (50.9%)	507	230 (52.8%)	206 (47.2%)	436	-9.5	+5.3
Licentiate in Music	11 (55.0%)	9 (45.0%)	20	11 (40.7%)	16 (59.3%)	27	25 (67.6%)	12 (32.4%)	37	-25.9	-45.9
Total Degrees	230 (48.0%)	249 (52.0%)	479	260 (48.7%)	274 (51.3%)	534	255 (53.9%)	218 (46.1%)	473	-10.3	+1.3
Certificates, Diplomas											
Artist Diploma	6 (75.0%)	2 (25.0%)	8	7 (63.6%)	4 (36.4%)	11	16 (69.6%)	7 (30.4%)	23	-27.3	-65.2
Total Certificates, Diplomas	6 (75.0%)	2 (25.0%)	8	7 (63.6%)	4 (36.4%)	11	16 (69.6%)	7 (30.4%)	23	-27.3	-65.2
Special, Visiting, Other	2 (25.0%)	6 (75.0%)	8	5 (62.5%)	3 (37.5%)	8	6 (37.5%)	10 (62.5%)	16	0.0	-50.0
Total Undergraduate	238 (48.1%)	257 (51.9%)	495	272 (49.2%)	281 (50.8%)	553	277 (54.1%)	235 (45.9%)	512	-10.5	-3.3
Graduate											
Masters											
Master of Arts	12 (40.0%)	18 (60.0%)	30	15 (35.7%)	27 (64.3%)	42	10 (47.6%)	11 (52.4%)	21	-28.6	+42.9
Master of Music	73 (52.1%)	67 (47.9%)	140	62 (50.4%)	61 (49.6%)	123	48 (51.6%)	45 (48.4%)	93	+13.8	+50.5
Total Masters	85 (50.0%)	85 (50.0%)	170	77 (46.7%)	88 (53.3%)	165	58 (50.9%)	56 (49.1%)	114	+3.0	+49.1
Doctoral											

Full-Time Enrolment by Faculty, by Degree and by Gender

	Fall 2007			Fall 2006			Fall 2002			% Change (1 Years)	% Change (5 Years)
	Female	Male	Total	Female	Male	Total	Female	Male	Total		
Doctor of Music	16 (42.1%)	22 (57.9%)	38	15 (50.0%)	15 (50.0%)	30	10 (43.5%)	13 (56.5%)	23	+26.7	+65.2
Doctor of Philosophy	16 (30.2%)	37 (69.8%)	53	16 (34.0%)	31 (66.0%)	47	13 (65.0%)	7 (35.0%)	20	+12.8	+165.0
Total Doctoral	32 (35.2%)	59 (64.8%)	91	31 (40.3%)	46 (59.7%)	77	23 (53.5%)	20 (46.5%)	43	+18.2	+111.6
Total Masters and Doctoral	117 (44.8%)	144 (55.2%)	261	108 (44.6%)	134 (55.4%)	242	81 (51.6%)	76 (48.4%)	157	+7.9	+66.2
Other Graduate											
Special, Visiting, Other	0 (0.0%)	0 (0.0%)	0	1 (100.0%)	0 (0.0%)	1	0 (0.0%)	0 (0.0%)	0	-100.0	0.0
Total Other Graduate	0 (0.0%)	0 (0.0%)	0	1 (100.0%)	0 (0.0%)	1	0 (0.0%)	0 (0.0%)	0	-100.0	0.0
Total Graduate	117 (44.8%)	144 (55.2%)	261	109 (44.9%)	134 (55.1%)	243	81 (51.6%)	76 (48.4%)	157	+7.4	+66.2
Postdoctoral	0 (0.0%)	5 (100.0%)	5	0 (0.0%)	2 (100.0%)	2	1 (100.0%)	0 (0.0%)	1	+150.0	+400.0
Total Schulich School of Music	355 (46.6%)	406 (53.4%)	761	381 (47.7%)	417 (52.3%)	798	359 (53.6%)	311 (46.4%)	670	-4.6	+13.6

Full-Time Enrolment by Faculty, by Degree and by Gender

	Fall 2007			Fall 2006			Fall 2002			% Change (1 Years)	% Change (5 Years)
	Female	Male	Total	Female	Male	Total	Female	Male	Total		
Faculty of Religious Studies											
Undergraduate											
Degrees											
Bachelor of Theology	11 (40.7%)	16 (59.3%)	27	5 (25.0%)	15 (75.0%)	20	9 (45.0%)	11 (55.0%)	20	+35.0	+35.0
Total Degrees	11 (40.7%)	16 (59.3%)	27	5 (25.0%)	15 (75.0%)	20	9 (45.0%)	11 (55.0%)	20	+35.0	+35.0
Special, Visiting, Other	2 (100.0%)	0 (0.0%)	2	0 (0.0%)	2 (100.0%)	2	0 (0.0%)	1 (100.0%)	1	0.0	+100.0
Total Undergraduate	13 (44.8%)	16 (55.2%)	29	5 (22.7%)	17 (77.3%)	22	9 (42.9%)	12 (57.1%)	21	+31.8	+38.1
Graduate											
Masters											
Master of Arts	8 (33.3%)	16 (66.7%)	24	11 (50.0%)	11 (50.0%)	22	12 (54.5%)	10 (45.5%)	22	+9.1	+9.1
Master of Sacred Theology	0 (0.0%)	0 (0.0%)	0	0 (0.0%)	2 (100.0%)	2	0 (0.0%)	1 (100.0%)	1	-100.0	-100.0
Total Masters	8 (33.3%)	16 (66.7%)	24	11 (45.8%)	13 (54.2%)	24	12 (52.2%)	11 (47.8%)	23	0.0	+4.3
Doctoral											
Doctor of Philosophy	13 (37.1%)	22 (62.9%)	35	14 (32.6%)	29 (67.4%)	43	10 (27.0%)	27 (73.0%)	37	-18.6	-5.4
Total Doctoral	13 (37.1%)	22 (62.9%)	35	14 (32.6%)	29 (67.4%)	43	10 (27.0%)	27 (73.0%)	37	-18.6	-5.4
Total Masters and Doctoral	21 (35.6%)	38 (64.4%)	59	25 (37.3%)	42 (62.7%)	67	22 (36.7%)	38 (63.3%)	60	-11.9	-1.7
Total Graduate	21 (35.6%)	38 (64.4%)	59	25 (37.3%)	42 (62.7%)	67	22 (36.7%)	38 (63.3%)	60	-11.9	-1.7

Full-Time Enrolment by Faculty, by Degree and by Gender

	Fall 2007			Fall 2006			Fall 2002			% Change (1 Years)	% Change (5 Years)
	Female	Male	Total	Female	Male	Total	Female	Male	Total		
Postdoctoral	0 (0.0%)	1 (100.0%)	1	0 (0.0%)	0 (0.0%)	0	0 (0.0%)	1 (100.0%)	1	-	0.0
Total Faculty of Religious Studies	34 (38.2%)	55 (61.8%)	89	30 (33.7%)	59 (66.3%)	89	31 (37.8%)	51 (62.2%)	82	0.0	+8.5

Full-Time Enrolment by Faculty, by Degree and by Gender

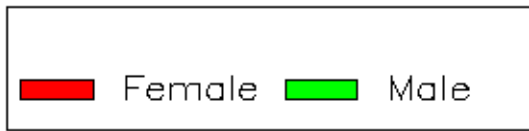
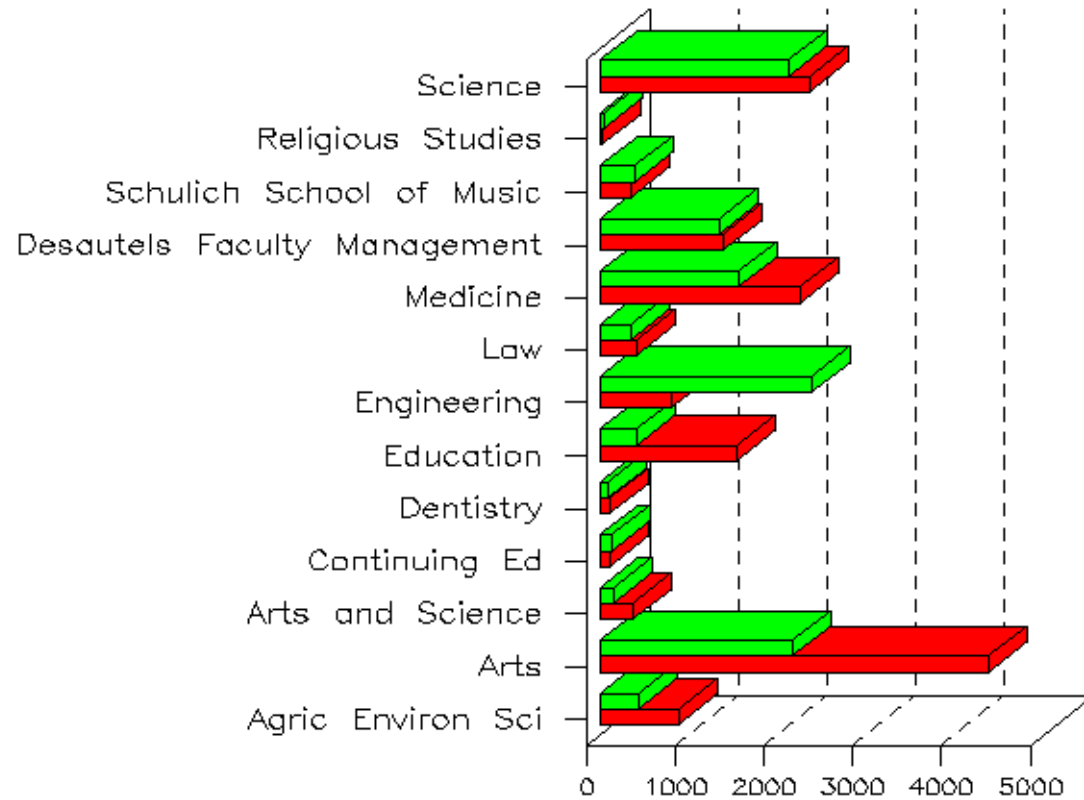
	Fall 2007			Fall 2006			Fall 2002			% Change (1 Years)	% Change (5 Years)
	Female	Male	Total	Female	Male	Total	Female	Male	Total		
Faculty of Science											
Undergraduate											
Degrees											
Bachelor of Science	1,986 (56.5%)	1,532 (43.5%)	3,518	2,026 (56.8%)	1,542 (43.2%)	3,568	2,152 (59.9%)	1,442 (40.1%)	3,594	-1.4	-2.1
Total Degrees	1,986 (56.5%)	1,532 (43.5%)	3,518	2,026 (56.8%)	1,542 (43.2%)	3,568	2,152 (59.9%)	1,442 (40.1%)	3,594	-1.4	-2.1
Certificates, Diplomas											
Diploma in Environment	1 (100.0%)	0 (0.0%)	1	1 (50.0%)	1 (50.0%)	2	1 (50.0%)	1 (50.0%)	2	-50.0	-50.0
Diploma in Meteorology	0 (0.0%)	1 (100.0%)	1	0 (0.0%)	1 (100.0%)	1	0 (0.0%)	2 (100.0%)	2	0.0	-50.0
Total Certificates, Diplomas	1 (50.0%)	1 (50.0%)	2	1 (33.3%)	2 (66.7%)	3	1 (25.0%)	3 (75.0%)	4	-33.3	-50.0
Special, Visiting, Other	46 (67.6%)	22 (32.4%)	68	35 (58.3%)	25 (41.7%)	60	45 (51.7%)	42 (48.3%)	87	+13.3	-21.8
Total Undergraduate	2,033 (56.7%)	1,555 (43.3%)	3,588	2,062 (56.8%)	1,569 (43.2%)	3,631	2,198 (59.6%)	1,487 (40.4%)	3,685	-1.2	-2.6
Graduate											
Masters											
Master of Arts	6 (66.7%)	3 (33.3%)	9	10 (58.8%)	7 (41.2%)	17	11 (52.4%)	10 (47.6%)	21	-47.1	-57.1
Master of Science	106 (35.5%)	193 (64.5%)	299	109 (32.1%)	231 (67.9%)	340	134 (40.0%)	201 (60.0%)	335	-12.1	-10.7
Total Masters	112 (36.4%)	196 (63.6%)	308	119 (33.3%)	238 (66.7%)	357	145 (40.7%)	211 (59.3%)	356	-13.7	-13.5
Doctoral											

Full-Time Enrolment by Faculty, by Degree and by Gender

	Fall 2007			Fall 2006			Fall 2002			% Change (1 Years)	% Change (5 Years)
	Female	Male	Total	Female	Male	Total	Female	Male	Total		
Doctor of Philosophy	191 (38.6%)	304 (61.4%)	495	191 (37.9%)	313 (62.1%)	504	135 (38.0%)	220 (62.0%)	355	-1.8	+39.4
Total Doctoral	191 (38.6%)	304 (61.4%)	495	191 (37.9%)	313 (62.1%)	504	135 (38.0%)	220 (62.0%)	355	-1.8	+39.4
Total Masters and Doctoral	303 (37.7%)	500 (62.3%)	803	310 (36.0%)	551 (64.0%)	861	280 (39.4%)	431 (60.6%)	711	-6.7	+12.9
Other Graduate											
Special, Visiting, Other	3 (60.0%)	2 (40.0%)	5	2 (66.7%)	1 (33.3%)	3	1 (50.0%)	1 (50.0%)	2	+66.7	+150.0
Total Other Graduate	3 (60.0%)	2 (40.0%)	5	2 (66.7%)	1 (33.3%)	3	1 (50.0%)	1 (50.0%)	2	+66.7	+150.0
Total Graduate	306 (37.9%)	502 (62.1%)	808	312 (36.1%)	552 (63.9%)	864	281 (39.4%)	432 (60.6%)	713	-6.5	+13.3
Postdoctoral	29 (30.2%)	67 (69.8%)	96	27 (29.3%)	65 (70.7%)	92	16 (24.6%)	49 (75.4%)	65	+4.3	+47.7
Total Faculty of Science	2,368 (52.7%)	2,124 (47.3%)	4,492	2,401 (52.3%)	2,186 (47.7%)	4,587	2,495 (55.9%)	1,968 (44.1%)	4,463	-2.1	+0.6

Full-Time Enrolment by Faculty, by Degree and by Gender

Enrolment Statistics Chart
by Faculty and by Gender



Full-Time Enrolment by Faculty, by Degree and by Gender

Undergraduate numbers are based on "levels" that are defined as: Undergraduate, Dentistry/Law/Medicine.

Graduate numbers are based on "levels" that are defined as: Masters, Graduate Diplomas and Certificates, Doctorate, Graduate Qualifying.

Residents and Fellows numbers are based on "levels" that are defined as: Post Graduate Medicine/Dentistry.

Full-time "loads" for the 2007 and 2006 terms includes: full-time, non-resident, thesis full-time, thesis additional session, visiting additional session, and non resident exchange.

The pre-200209 legacy term (pre-Banner) includes: full-time, additional session and non-resident.

Part-time "loads" for the 2007 and 2006 terms includes: part-time, Continuing Education, leave of absence, no credits, thesis half-time and unknown time status. The pre-200209 legacy term (pre-Banner) includes: part-time, Continuing Education, session of admission, thesis continuing, session of graduation, half-time, and leave of absence.

As of fall 2004, the non resident exchange students are reported under full-time "load".

These statistics are headcounts of students, based on their primary curriculum.

"Faculties of Arts and Science" includes students that are registered in both Arts and Science and are pursuing the B.A.&Sc. degree.

The SUMMARY now appears in the first part of the report and is a COUNT for all students and the following pages contains a DETAILED breakdown.

Note: 2007 registration totals based on October 15, 2007.
2006 registration totals based on October 13, 2006.
2002 registration totals based on October 04, 2002.