

Graduation Statistics Report
by Faculty, by Degree and by Gender

Date: 30-OCT-07

Page 1 of 30

	2006-2007 academic year			2005-2006 academic year			2004-2005 academic year			% Change (1 Years)	% Change (3 Years)
	Female	Male	Total	Female	Male	Total	Female	Male	Total		
All Students											
Undergraduate											
Degrees	2,919 (61.6%)	1,823 (38.4%)	4,742	2,919 (62.6%)	1,747 (37.4%)	4,666	2,865 (62.5%)	1,721 (37.5%)	4,586	+1.6	+3.4
Certificates, Diplomas	240 (69.8%)	104 (30.2%)	344	322 (73.0%)	119 (27.0%)	441	245 (70.6%)	102 (29.4%)	347	-22.0	-0.9
Total Undergraduate	3,159 (62.1%)	1,927 (37.9%)	5,086	3,241 (63.5%)	1,866 (36.5%)	5,107	3,110 (63.0%)	1,823 (37.0%)	4,933	-0.4	+3.1
Graduate											
Masters	769 (55.2%)	624 (44.8%)	1,393	798 (53.2%)	701 (46.8%)	1,499	774 (51.6%)	726 (48.4%)	1,500	-7.1	-7.1
Doctoral	188 (48.1%)	203 (51.9%)	391	155 (44.9%)	190 (55.1%)	345	139 (43.4%)	181 (56.6%)	320	+13.3	+22.2
Total Masters and Doctoral	957 (53.6%)	827 (46.4%)	1,784	953 (51.7%)	891 (48.3%)	1,844	913 (50.2%)	907 (49.8%)	1,820	-3.3	-2.0
Other Graduate											
Certificates, Diplomas	211 (59.8%)	142 (40.2%)	353	188 (54.7%)	156 (45.3%)	344	197 (49.4%)	202 (50.6%)	399	+2.6	-11.5
Total Other Graduate	211 (59.8%)	142 (40.2%)	353	188 (54.7%)	156 (45.3%)	344	197 (49.4%)	202 (50.6%)	399	+2.6	-11.5
Total Graduate	1,168 (54.7%)	969 (45.3%)	2,137	1,141 (52.1%)	1,047 (47.9%)	2,188	1,110 (50.0%)	1,109 (50.0%)	2,219	-2.3	-3.7
CE Non-credit certificates	140 (60.1%)	93 (39.9%)	233	189 (60.0%)	126 (40.0%)	315	166 (58.2%)	119 (41.8%)	285	-26.0	-18.2
Total	4,467 (59.9%)	2,989 (40.1%)	7,456	4,571 (60.1%)	3,039 (39.9%)	7,610	4,386 (59.0%)	3,051 (41.0%)	7,437	-2.0	+0.3

Graduation Statistics Report
by Faculty, by Degree and by Gender

Date: 30-OCT-07

Page 2 of 30

	2006-2007 academic year			2005-2006 academic year			2004-2005 academic year			% Change (1 Years)	% Change (3 Years)
	Female	Male	Total	Female	Male	Total	Female	Male	Total		
All Students											
Faculty of Agric Environ Sci	220 (68.3%)	102 (31.7%)	322	185 (69.5%)	81 (30.5%)	266	155 (64.0%)	87 (36.0%)	242	+21.1	+33.1
Faculty of Arts	1,208 (68.6%)	552 (31.4%)	1,760	1,288 (69.1%)	576 (30.9%)	1,864	1,334 (68.5%)	613 (31.5%)	1,947	-5.6	-9.6
Faculties of Arts and Science	33 (75.0%)	11 (25.0%)	44	16 (72.7%)	6 (27.3%)	22	1 (33.3%)	2 (66.7%)	3	+100.0	-
Centre for Continuing Ed	480 (61.9%)	295 (38.1%)	775	539 (60.1%)	358 (39.9%)	897	501 (57.3%)	373 (42.7%)	874	-13.6	-11.3
Faculty of Dentistry	24 (63.2%)	14 (36.8%)	38	23 (60.5%)	15 (39.5%)	38	19 (61.3%)	12 (38.7%)	31	0.0	+22.6
Faculty of Education	571 (82.4%)	122 (17.6%)	693	640 (82.2%)	139 (17.8%)	779	579 (81.2%)	134 (18.8%)	713	-11.0	-2.8
Faculty of Engineering	239 (31.3%)	524 (68.7%)	763	220 (29.4%)	528 (70.6%)	748	234 (31.9%)	500 (68.1%)	734	+2.0	+4.0
Faculty of Law	112 (48.9%)	117 (51.1%)	229	118 (52.7%)	106 (47.3%)	224	135 (58.4%)	96 (41.6%)	231	+2.2	-0.9
Faculty of Medicine	483 (70.9%)	198 (29.1%)	681	425 (65.6%)	223 (34.4%)	648	380 (66.5%)	191 (33.5%)	571	+5.1	+19.3
Desautels Faculty of Management	361 (43.9%)	462 (56.1%)	823	377 (45.5%)	452 (54.5%)	829	364 (46.4%)	421 (53.6%)	785	-0.7	+4.8
Schulich School of Music	119 (53.8%)	102 (46.2%)	221	111 (60.3%)	73 (39.7%)	184	95 (46.8%)	108 (53.2%)	203	+20.1	+8.9
Faculty of Religious Studies	10 (50.0%)	10 (50.0%)	20	7 (28.0%)	18 (72.0%)	25	16 (55.2%)	13 (44.8%)	29	-20.0	-31.0
Faculty of Science	607 (55.8%)	480 (44.2%)	1,087	622 (57.3%)	464 (42.7%)	1,086	573 (53.4%)	501 (46.6%)	1,074	+0.1	+1.2
Total	4,467 (59.9%)	2,989 (40.1%)	7,456	4,571 (60.1%)	3,039 (39.9%)	7,610	4,386 (59.0%)	3,051 (41.0%)	7,437	-2.0	+0.3

Graduation Statistics Report
by Faculty, by Degree and by Gender

Date: 30-OCT-07
Page 3 of 30

	2006-2007 academic year			2005-2006 academic year			2004-2005 academic year			% Change (1 Years)	% Change (3 Years)
	Female	Male	Total	Female	Male	Total	Female	Male	Total		
Faculty of Agric Environ Sci											
Undergraduate											
Degrees											
B Eng Bioresource	2 (15.4%)	11 (84.6%)	13	2 (50.0%)	2 (50.0%)	4	0 (0.0%)	1 (100.0%)	1	+225.0	-
B SC (Food Science)	7 (70.0%)	3 (30.0%)	10	5 (71.4%)	2 (28.6%)	7	6 (85.7%)	1 (14.3%)	7	+42.9	+42.9
B SC (Nutritional Science)	56 (98.2%)	1 (1.8%)	57	24 (92.3%)	2 (7.7%)	26	26 (96.3%)	1 (3.7%)	27	+119.2	+111.1
B SC Agricu and Environm Sc	62 (68.9%)	28 (31.1%)	90	75 (74.3%)	26 (25.7%)	101	61 (70.9%)	25 (29.1%)	86	-10.9	+4.7
B SC Agricultural Engineering	0 (0.0%)	0 (0.0%)	0	0 (0.0%)	2 (100.0%)	2	6 (66.7%)	3 (33.3%)	9	-100.0	-100.0
Total Degrees	127 (74.7%)	43 (25.3%)	170	106 (75.7%)	34 (24.3%)	140	99 (76.2%)	31 (23.8%)	130	+21.4	+30.8
Certificates, Diplomas											
Cert in Ecological Agriculture	0 (0.0%)	0 (0.0%)	0	0 (0.0%)	0 (0.0%)	0	1 (100.0%)	0 (0.0%)	1	0.0	-100.0
Diploma in Environment	4 (80.0%)	1 (20.0%)	5	0 (0.0%)	1 (100.0%)	1	2 (66.7%)	1 (33.3%)	3	+400.0	+66.7
Total Certificates, Diplomas	4 (80.0%)	1 (20.0%)	5	0 (0.0%)	1 (100.0%)	1	3 (75.0%)	1 (25.0%)	4	+400.0	+25.0
Total Undergraduate	131 (74.9%)	44 (25.1%)	175	106 (75.2%)	35 (24.8%)	141	102 (76.1%)	32 (23.9%)	134	+24.1	+30.6
Graduate											
Masters											

Graduation Statistics Report
by Faculty, by Degree and by Gender

Date: 30-OCT-07
Page 4 of 30

	2006-2007 academic year			2005-2006 academic year			2004-2005 academic year			% Change (1 Years)	% Change (3 Years)
	Female	Male	Total	Female	Male	Total	Female	Male	Total		
Master of Science	52 (62.7%)	31 (37.3%)	83	51 (66.2%)	26 (33.8%)	77	37 (59.7%)	25 (40.3%)	62	+7.8	+33.9
Master of Science Applied	14 (77.8%)	4 (22.2%)	18	11 (68.8%)	5 (31.3%)	16	4 (80.0%)	1 (20.0%)	5	+12.5	+260.0
Total Masters	66 (65.3%)	35 (34.7%)	101	62 (66.7%)	31 (33.3%)	93	41 (61.2%)	26 (38.8%)	67	+8.6	+50.7
Doctoral											
Doctor of Philosophy	17 (44.7%)	21 (55.3%)	38	11 (45.8%)	13 (54.2%)	24	8 (28.6%)	20 (71.4%)	28	+58.3	+35.7
Total Doctoral	17 (44.7%)	21 (55.3%)	38	11 (45.8%)	13 (54.2%)	24	8 (28.6%)	20 (71.4%)	28	+58.3	+35.7
Total Masters and Doctoral	83 (59.7%)	56 (40.3%)	139	73 (62.4%)	44 (37.6%)	117	49 (51.6%)	46 (48.4%)	95	+18.8	+46.3
Other Graduate											
Certificates, Diplomas											
Gr Cert in Biotechnology	5 (83.3%)	1 (16.7%)	6	5 (71.4%)	2 (28.6%)	7	4 (30.8%)	9 (69.2%)	13	-14.3	-53.8
Gr Ct Bio Eng Int Wtr Res Mgt	0 (0.0%)	1 (100.0%)	1	0 (0.0%)	0 (0.0%)	0	0 (0.0%)	0 (0.0%)	0	-	-
Gr Dip in Reg Diet (R.D.) Cred	1 (100.0%)	0 (0.0%)	1	1 (100.0%)	0 (0.0%)	1	0 (0.0%)	0 (0.0%)	0	0.0	-
Total Certificates, Diplomas	6 (75.0%)	2 (25.0%)	8	6 (75.0%)	2 (25.0%)	8	4 (30.8%)	9 (69.2%)	13	0.0	-38.5
Total Other Graduate	6 (75.0%)	2 (25.0%)	8	6 (75.0%)	2 (25.0%)	8	4 (30.8%)	9 (69.2%)	13	0.0	-38.5
Total Graduate	89 (60.5%)	58 (39.5%)	147	79 (63.2%)	46 (36.8%)	125	53 (49.1%)	55 (50.9%)	108	+17.6	+36.1
Total Faculty of Agric Environ Sci	220 (68.3%)	102 (31.7%)	322	185 (69.5%)	81 (30.5%)	266	155 (64.0%)	87 (36.0%)	242	+21.1	+33.1

Graduation Statistics Report
by Faculty, by Degree and by Gender

Date: 30-OCT-07
Page 5 of 30

	2006-2007 academic year			2005-2006 academic year			2004-2005 academic year			% Change (1 Years)	% Change (3 Years)
	Female	Male	Total	Female	Male	Total	Female	Male	Total		
Faculty of Arts											
Undergraduate											
Degrees											
Bachelor of Arts	928 (68.0%)	437 (32.0%)	1,365	1,022 (69.6%)	447 (30.4%)	1,469	1,050 (68.4%)	485 (31.6%)	1,535	-7.1	-11.1
Bachelor of Social Work	105 (85.4%)	18 (14.6%)	123	78 (84.8%)	14 (15.2%)	92	103 (88.8%)	13 (11.2%)	116	+33.7	+6.0
Total Degrees	1,033 (69.4%)	455 (30.6%)	1,488	1,100 (70.5%)	461 (29.5%)	1,561	1,153 (69.8%)	498 (30.2%)	1,651	-4.7	-9.9
Certificates, Diplomas											
Diploma in Environment	5 (100.0%)	0 (0.0%)	5	4 (50.0%)	4 (50.0%)	8	5 (71.4%)	2 (28.6%)	7	-37.5	-28.6
Total Certificates, Diplomas	5 (100.0%)	0 (0.0%)	5	4 (50.0%)	4 (50.0%)	8	5 (71.4%)	2 (28.6%)	7	-37.5	-28.6
Total Undergraduate	1,038 (69.5%)	455 (30.5%)	1,493	1,104 (70.4%)	465 (29.6%)	1,569	1,158 (69.8%)	500 (30.2%)	1,658	-4.8	-10.0
Graduate											
Masters											
Master of Arts	92 (57.9%)	67 (42.1%)	159	96 (57.1%)	72 (42.9%)	168	100 (56.2%)	78 (43.8%)	178	-5.4	-10.7
Master of Social Work	48 (90.6%)	5 (9.4%)	53	58 (85.3%)	10 (14.7%)	68	50 (80.6%)	12 (19.4%)	62	-22.1	-14.5
Total Masters	140 (66.0%)	72 (34.0%)	212	154 (65.3%)	82 (34.7%)	236	150 (62.5%)	90 (37.5%)	240	-10.2	-11.7
Doctoral											

Graduation Statistics Report
by Faculty, by Degree and by Gender

Date: 30-OCT-07

Page 6 of 30

	2006-2007 academic year			2005-2006 academic year			2004-2005 academic year			% Change (1 Years)	% Change (3 Years)
	Female	Male	Total	Female	Male	Total	Female	Male	Total		
Doctor of Philosophy	30 (54.5%)	25 (45.5%)	55	30 (50.8%)	29 (49.2%)	59	26 (53.1%)	23 (46.9%)	49	-6.8	+12.2
Total Doctoral	30 (54.5%)	25 (45.5%)	55	30 (50.8%)	29 (49.2%)	59	26 (53.1%)	23 (46.9%)	49	-6.8	+12.2
Total Masters and Doctoral	170 (63.7%)	97 (36.3%)	267	184 (62.4%)	111 (37.6%)	295	176 (60.9%)	113 (39.1%)	289	-9.5	-7.6
Total Graduate	170 (63.7%)	97 (36.3%)	267	184 (62.4%)	111 (37.6%)	295	176 (60.9%)	113 (39.1%)	289	-9.5	-7.6
Total Faculty of Arts	1,208 (68.6%)	552 (31.4%)	1,760	1,288 (69.1%)	576 (30.9%)	1,864	1,334 (68.5%)	613 (31.5%)	1,947	-5.6	-9.6

Graduation Statistics Report
by Faculty, by Degree and by Gender

Date: 30-OCT-07
Page 7 of 30

	2006-2007 academic year			2005-2006 academic year			2004-2005 academic year			% Change (1 Years)	% Change (3 Years)
	Female	Male	Total	Female	Male	Total	Female	Male	Total		
Faculties of Arts and Science											
Undergraduate											
Degrees											
Bachelor of Arts and Science	33 (75.0%)	11 (25.0%)	44	16 (72.7%)	6 (27.3%)	22	1 (33.3%)	2 (66.7%)	3	+100.0	-
Total Degrees	33 (75.0%)	11 (25.0%)	44	16 (72.7%)	6 (27.3%)	22	1 (33.3%)	2 (66.7%)	3	+100.0	-
Total Undergraduate	33 (75.0%)	11 (25.0%)	44	16 (72.7%)	6 (27.3%)	22	1 (33.3%)	2 (66.7%)	3	+100.0	-
Total Faculties of Arts and Science	33 (75.0%)	11 (25.0%)	44	16 (72.7%)	6 (27.3%)	22	1 (33.3%)	2 (66.7%)	3	+100.0	-

Graduation Statistics Report
by Faculty, by Degree and by Gender

Date: 30-OCT-07

Page 8 of 30

	2006-2007 academic year			2005-2006 academic year			2004-2005 academic year			% Change (1 Years)	% Change (3 Years)
	Female	Male	Total	Female	Male	Total	Female	Male	Total		
Centre for Continuing Ed											
Undergraduate											
Certificates, Diplomas											
Cert Prof Engl for Prof Comm	7 (43.8%)	9 (56.3%)	16	0 (0.0%)	1 (100.0%)	1	0 (0.0%)	0 (0.0%)	0	-	-
Cert Prof French for Prof Comm	1 (50.0%)	1 (50.0%)	2	0 (0.0%)	0 (0.0%)	0	0 (0.0%)	0 (0.0%)	0	-	-
Cert System Analysis & Design	1 (33.3%)	2 (66.7%)	3	3 (20.0%)	12 (80.0%)	15	9 (45.0%)	11 (55.0%)	20	-80.0	-85.0
Cert Transport & Logistics	0 (0.0%)	2 (100.0%)	2	0 (0.0%)	1 (100.0%)	1	2 (28.6%)	5 (71.4%)	7	+100.0	-71.4
Cert in Aboriginal Soc Wk Prac	1 (100.0%)	0 (0.0%)	1	0 (0.0%)	0 (0.0%)	0	0 (0.0%)	0 (0.0%)	0	-	-
Cert in Comp Software Tech	0 (0.0%)	1 (100.0%)	1	0 (0.0%)	5 (100.0%)	5	1 (20.0%)	4 (80.0%)	5	-80.0	-80.0
Cert in Health & Soc Serv Mgmt	2 (100.0%)	0 (0.0%)	2	7 (70.0%)	3 (30.0%)	10	1 (100.0%)	0 (0.0%)	1	-80.0	+100.0
Cert in Human Resources Mgmt	46 (79.3%)	12 (20.7%)	58	59 (88.1%)	8 (11.9%)	67	53 (79.1%)	14 (20.9%)	67	-13.4	-13.4
Cert in Northern Social Work	5 (100.0%)	0 (0.0%)	5	0 (0.0%)	0 (0.0%)	0	3 (100.0%)	0 (0.0%)	3	-	+66.7
Cert in Public Relations Mgmt	24 (88.9%)	3 (11.1%)	27	33 (80.5%)	8 (19.5%)	41	22 (95.7%)	1 (4.3%)	23	-34.1	+17.4
Cert in Software Development	1 (25.0%)	3 (75.0%)	4	0 (0.0%)	0 (0.0%)	0	0 (0.0%)	0 (0.0%)	0	-	-

Graduation Statistics Report
by Faculty, by Degree and by Gender

Date: 30-OCT-07
Page 9 of 30

	2006-2007 academic year			2005-2006 academic year			2004-2005 academic year			% Change (1 Years)	% Change (3 Years)
	Female	Male	Total	Female	Male	Total	Female	Male	Total		
Certificate in Accounting	8 (50.0%)	8 (50.0%)	16	6 (54.5%)	5 (45.5%)	11	6 (60.0%)	4 (40.0%)	10	+45.5	+60.0
Certificate in Internal Audit	0 (0.0%)	0 (0.0%)	0	1 (50.0%)	1 (50.0%)	2	0 (0.0%)	2 (100.0%)	2	-100.0	-100.0
Certificate in Management	35 (51.5%)	33 (48.5%)	68	27 (51.9%)	25 (48.1%)	52	23 (47.9%)	25 (52.1%)	48	+30.8	+41.7
Certificate in Marketing	4 (57.1%)	3 (42.9%)	7	10 (50.0%)	10 (50.0%)	20	7 (70.0%)	3 (30.0%)	10	-65.0	-30.0
Certificate in Risk Management	4 (44.4%)	5 (55.6%)	9	3 (60.0%)	2 (40.0%)	5	1 (12.5%)	7 (87.5%)	8	+80.0	+12.5
Certificate in Translation	46 (78.0%)	13 (22.0%)	59	64 (76.2%)	20 (23.8%)	84	47 (79.7%)	12 (20.3%)	59	-29.8	0.0
Total Certificates, Diplomas	185 (66.1%)	95 (33.9%)	280	213 (67.8%)	101 (32.2%)	314	175 (66.5%)	88 (33.5%)	263	-10.8	+6.5
Total Undergraduate	185 (66.1%)	95 (33.9%)	280	213 (67.8%)	101 (32.2%)	314	175 (66.5%)	88 (33.5%)	263	-10.8	+6.5
Graduate											
Other Graduate											
Certificates, Diplomas											
Dip in Information Technology	0 (0.0%)	2 (100.0%)	2	0 (0.0%)	6 (100.0%)	6	0 (0.0%)	0 (0.0%)	0	-66.7	-
Diploma in Accounting	42 (56.8%)	32 (43.2%)	74	54 (58.7%)	38 (41.3%)	92	63 (57.8%)	46 (42.2%)	109	-19.6	-32.1
Diploma in Management	69 (57.0%)	52 (43.0%)	121	43 (44.3%)	54 (55.7%)	97	43 (38.4%)	69 (61.6%)	112	+24.7	+8.0

Graduation Statistics Report
by Faculty, by Degree and by Gender

Date: 30-OCT-07

Page 10 of 30

	2006-2007 academic year			2005-2006 academic year			2004-2005 academic year			% Change (1 Years)	% Change (3 Years)
	Female	Male	Total	Female	Male	Total	Female	Male	Total		
Grad CT Field of Mntl Hlth/Ill	0 (0.0%)	0 (0.0%)	0	0 (0.0%)	0 (0.0%)	0	0 (0.0%)	1 (100.0%)	1	0.0	-100.0
Grad Cert in Operations Mgmt	0 (0.0%)	1 (100.0%)	1	0 (0.0%)	1 (100.0%)	1	2 (66.7%)	1 (33.3%)	3	0.0	-66.7
Grad Cert in Treasury/Finance	13 (72.2%)	5 (27.8%)	18	8 (47.1%)	9 (52.9%)	17	8 (38.1%)	13 (61.9%)	21	+5.9	-14.3
Grad Dip in Translation	5 (83.3%)	1 (16.7%)	6	10 (76.9%)	3 (23.1%)	13	5 (71.4%)	2 (28.6%)	7	-53.8	-14.3
Graduate Cert in E-Commerce	1 (100.0%)	0 (0.0%)	1	1 (20.0%)	4 (80.0%)	5	3 (30.0%)	7 (70.0%)	10	-80.0	-90.0
Graduate Cert in Health Care	5 (83.3%)	1 (16.7%)	6	2 (66.7%)	1 (33.3%)	3	2 (100.0%)	0 (0.0%)	2	+100.0	+200.0
Graduate Cert in Intl Business	6 (60.0%)	4 (40.0%)	10	7 (63.6%)	4 (36.4%)	11	9 (42.9%)	12 (57.1%)	21	-9.1	-52.4
Graduate Cert in Leadership	7 (77.8%)	2 (22.2%)	9	4 (40.0%)	6 (60.0%)	10	11 (68.8%)	5 (31.3%)	16	-10.0	-43.8
Graduate Cert in Marketing	5 (41.7%)	7 (58.3%)	12	7 (70.0%)	3 (30.0%)	10	9 (56.3%)	7 (43.8%)	16	+20.0	-25.0
Graduate Cert in Taxation	2 (100.0%)	0 (0.0%)	2	1 (33.3%)	2 (66.7%)	3	2 (66.7%)	1 (33.3%)	3	-33.3	-33.3
Graduate Diploma in Taxation	0 (0.0%)	0 (0.0%)	0	0 (0.0%)	0 (0.0%)	0	3 (60.0%)	2 (40.0%)	5	0.0	-100.0
Total Certificates, Diplomas	155 (59.2%)	107 (40.8%)	262	137 (51.1%)	131 (48.9%)	268	160 (49.1%)	166 (50.9%)	326	-2.2	-19.6
Total Other Graduate	155 (59.2%)	107 (40.8%)	262	137 (51.1%)	131 (48.9%)	268	160 (49.1%)	166 (50.9%)	326	-2.2	-19.6
Total Graduate	155 (59.2%)	107 (40.8%)	262	137 (51.1%)	131 (48.9%)	268	160 (49.1%)	166 (50.9%)	326	-2.2	-19.6

Graduation Statistics Report
by Faculty, by Degree and by Gender

Date: 30-OCT-07

Page 11 of 30

	2006-2007 academic year			2005-2006 academic year			2004-2005 academic year			% Change (1 Years)	% Change (3 Years)
	Female	Male	Total	Female	Male	Total	Female	Male	Total		
CE Non-credit certificates											
Cert Proficiency in English	100 (57.8%)	73 (42.2%)	173	145 (57.8%)	106 (42.2%)	251	110 (52.1%)	101 (47.9%)	211	-31.1	-18.0
Cert Proficiency in French	27 (61.4%)	17 (38.6%)	44	37 (68.5%)	17 (31.5%)	54	39 (75.0%)	13 (25.0%)	52	-18.5	-15.4
Cert Proficiency in Spanish	13 (81.3%)	3 (18.8%)	16	7 (70.0%)	3 (30.0%)	10	17 (77.3%)	5 (22.7%)	22	+60.0	-27.3
Total CE Non-credit certificates	140 (60.1%)	93 (39.9%)	233	189 (60.0%)	126 (40.0%)	315	166 (58.2%)	119 (41.8%)	285	-26.0	-18.2
Total Centre for Continuing Ed	480 (61.9%)	295 (38.1%)	775	539 (60.1%)	358 (39.9%)	897	501 (57.3%)	373 (42.7%)	874	-13.6	-11.3

Graduation Statistics Report
by Faculty, by Degree and by Gender

Date: 30-OCT-07
Page 12 of 30

	2006-2007 academic year			2005-2006 academic year			2004-2005 academic year			% Change (1 Years)	% Change (3 Years)
	Female	Male	Total	Female	Male	Total	Female	Male	Total		
Faculty of Dentistry											
Undergraduate											
Degrees											
D M D	19 (59.4%)	13 (40.6%)	32	20 (58.8%)	14 (41.2%)	34	17 (65.4%)	9 (34.6%)	26	-5.9	+23.1
Total Degrees	19 (59.4%)	13 (40.6%)	32	20 (58.8%)	14 (41.2%)	34	17 (65.4%)	9 (34.6%)	26	-5.9	+23.1
Total Undergraduate	19 (59.4%)	13 (40.6%)	32	20 (58.8%)	14 (41.2%)	34	17 (65.4%)	9 (34.6%)	26	-5.9	+23.1
Graduate											
Masters											
Master of Science	5 (83.3%)	1 (16.7%)	6	3 (75.0%)	1 (25.0%)	4	2 (50.0%)	2 (50.0%)	4	+50.0	+50.0
Total Masters	5 (83.3%)	1 (16.7%)	6	3 (75.0%)	1 (25.0%)	4	2 (50.0%)	2 (50.0%)	4	+50.0	+50.0
Doctoral											
Doctor of Philosophy	0 (0.0%)	0 (0.0%)	0	0 (0.0%)	0 (0.0%)	0	0 (0.0%)	1 (100.0%)	1	0.0	-100.0
Total Doctoral	0 (0.0%)	0 (0.0%)	0	0 (0.0%)	0 (0.0%)	0	0 (0.0%)	1 (100.0%)	1	0.0	-100.0
Total Masters and Doctoral	5 (83.3%)	1 (16.7%)	6	3 (75.0%)	1 (25.0%)	4	2 (40.0%)	3 (60.0%)	5	+50.0	+20.0
Total Graduate	5 (83.3%)	1 (16.7%)	6	3 (75.0%)	1 (25.0%)	4	2 (40.0%)	3 (60.0%)	5	+50.0	+20.0
Total Faculty of Dentistry	24 (63.2%)	14 (36.8%)	38	23 (60.5%)	15 (39.5%)	38	19 (61.3%)	12 (38.7%)	31	0.0	+22.6

Graduation Statistics Report
by Faculty, by Degree and by Gender

Date: 30-OCT-07
Page 13 of 30

	2006-2007 academic year			2005-2006 academic year			2004-2005 academic year			% Change (1 Years)	% Change (3 Years)
	Female	Male	Total	Female	Male	Total	Female	Male	Total		
Faculty of Education											
Undergraduate											
Degrees											
B Ed Vocational Education	3 (100.0%)	0 (0.0%)	3	0 (0.0%)	0 (0.0%)	0	0 (0.0%)	0 (0.0%)	0	-	-
B Ed for Certified Teachers	23 (82.1%)	5 (17.9%)	28	14 (87.5%)	2 (12.5%)	16	24 (100.0%)	0 (0.0%)	24	+75.0	+16.7
B SC (Kinesiology)	24 (75.0%)	8 (25.0%)	32	8 (66.7%)	4 (33.3%)	12	0 (0.0%)	0 (0.0%)	0	+166.7	-
Bachelor of Education	271 (81.1%)	63 (18.9%)	334	309 (81.1%)	72 (18.9%)	381	298 (79.5%)	77 (20.5%)	375	-12.3	-10.9
Total Degrees	321 (80.9%)	76 (19.1%)	397	331 (80.9%)	78 (19.1%)	409	322 (80.7%)	77 (19.3%)	399	-2.9	-0.5
Certificates, Diplomas											
Cert Aboriginal Literacy Ed	2 (66.7%)	1 (33.3%)	3	40 (95.2%)	2 (4.8%)	42	8 (80.0%)	2 (20.0%)	10	-92.9	-70.0
Cert Ed 1st Nations & Inuit	6 (85.7%)	1 (14.3%)	7	30 (88.2%)	4 (11.8%)	34	12 (85.7%)	2 (14.3%)	14	-79.4	-50.0
Cert Educational Technology	0 (0.0%)	0 (0.0%)	0	0 (0.0%)	0 (0.0%)	0	2 (100.0%)	0 (0.0%)	2	0.0	-100.0
Cert Inclusive Education	28 (93.3%)	2 (6.7%)	30	25 (89.3%)	3 (10.7%)	28	24 (96.0%)	1 (4.0%)	25	+7.1	+20.0
Cert Northern & Native Educ	0 (0.0%)	0 (0.0%)	0	1 (100.0%)	0 (0.0%)	1	1 (100.0%)	0 (0.0%)	1	-100.0	-100.0
Cert Second Language Teach	0 (0.0%)	0 (0.0%)	0	0 (0.0%)	0 (0.0%)	0	3 (75.0%)	1 (25.0%)	4	0.0	-100.0

Graduation Statistics Report
by Faculty, by Degree and by Gender

Date: 30-OCT-07

Page 14 of 30

	2006-2007 academic year			2005-2006 academic year			2004-2005 academic year			% Change (1 Years)	% Change (3 Years)
	Female	Male	Total	Female	Male	Total	Female	Male	Total		
Dip Human Rel & Family Life Ed	4 (100.0%)	0 (0.0%)	4	2 (66.7%)	1 (33.3%)	3	6 (85.7%)	1 (14.3%)	7	+33.3	-42.9
Total Certificates, Diplomas	40 (90.9%)	4 (9.1%)	44	98 (90.7%)	10 (9.3%)	108	56 (88.9%)	7 (11.1%)	63	-59.3	-30.2
Total Undergraduate	361 (81.9%)	80 (18.1%)	441	429 (83.0%)	88 (17.0%)	517	378 (81.8%)	84 (18.2%)	462	-14.7	-4.5
Graduate											
Masters											
Master of Arts	72 (82.8%)	15 (17.2%)	87	68 (79.1%)	18 (20.9%)	86	73 (82.0%)	16 (18.0%)	89	+1.2	-2.2
Master of Education	39 (95.1%)	2 (4.9%)	41	38 (100.0%)	0 (0.0%)	38	27 (84.4%)	5 (15.6%)	32	+7.9	+28.1
Master of Library & Info St	49 (81.7%)	11 (18.3%)	60	48 (73.8%)	17 (26.2%)	65	47 (81.0%)	11 (19.0%)	58	-7.7	+3.4
Master of Science	3 (100.0%)	0 (0.0%)	3	3 (33.3%)	6 (66.7%)	9	5 (71.4%)	2 (28.6%)	7	-66.7	-57.1
Total Masters	163 (85.3%)	28 (14.7%)	191	157 (79.3%)	41 (20.7%)	198	152 (81.7%)	34 (18.3%)	186	-3.5	+2.7
Doctoral											
Doctor of Philosophy	26 (76.5%)	8 (23.5%)	34	25 (86.2%)	4 (13.8%)	29	25 (78.1%)	7 (21.9%)	32	+17.2	+6.3
Total Doctoral	26 (76.5%)	8 (23.5%)	34	25 (86.2%)	4 (13.8%)	29	25 (78.1%)	7 (21.9%)	32	+17.2	+6.3
Total Masters and Doctoral	189 (84.0%)	36 (16.0%)	225	182 (80.2%)	45 (19.8%)	227	177 (81.2%)	41 (18.8%)	218	-0.9	+3.2
Other Graduate											
Certificates, Diplomas											

Graduation Statistics Report
by Faculty, by Degree and by Gender

Date: 30-OCT-07

Page 15 of 30

	2006-2007 academic year			2005-2006 academic year			2004-2005 academic year			% Change (1 Years)	% Change (3 Years)
	Female	Male	Total	Female	Male	Total	Female	Male	Total		
Gr Cert Couns Appl to Teaching	0 (0.0%)	0 (0.0%)	0	1 (100.0%)	0 (0.0%)	1	1 (50.0%)	1 (50.0%)	2	-100.0	-100.0
Gr Cert Educational Leadersh 1	17 (77.3%)	5 (22.7%)	22	25 (83.3%)	5 (16.7%)	30	19 (70.4%)	8 (29.6%)	27	-26.7	-18.5
Gr Cert Educational Leadersh 2	3 (75.0%)	1 (25.0%)	4	3 (75.0%)	1 (25.0%)	4	4 (100.0%)	0 (0.0%)	4	0.0	0.0
Gr Cert in Library & Info St	1 (100.0%)	0 (0.0%)	1	0 (0.0%)	0 (0.0%)	0	0 (0.0%)	0 (0.0%)	0	-	-
Total Certificates, Diplomas	21 (77.8%)	6 (22.2%)	27	29 (82.9%)	6 (17.1%)	35	24 (72.7%)	9 (27.3%)	33	-22.9	-18.2
Total Other Graduate	21 (77.8%)	6 (22.2%)	27	29 (82.9%)	6 (17.1%)	35	24 (72.7%)	9 (27.3%)	33	-22.9	-18.2
Total Graduate	210 (83.3%)	42 (16.7%)	252	211 (80.5%)	51 (19.5%)	262	201 (80.1%)	50 (19.9%)	251	-3.8	+0.4
Total Faculty of Education	571 (82.4%)	122 (17.6%)	693	640 (82.2%)	139 (17.8%)	779	579 (81.2%)	134 (18.8%)	713	-11.0	-2.8

Graduation Statistics Report
by Faculty, by Degree and by Gender

Date: 30-OCT-07
Page 16 of 30

	2006-2007 academic year			2005-2006 academic year			2004-2005 academic year			% Change (1 Years)	% Change (3 Years)
	Female	Male	Total	Female	Male	Total	Female	Male	Total		
Faculty of Engineering											
Undergraduate											
Degrees											
Bachelor of Engineering	118 (26.6%)	326 (73.4%)	444	104 (24.5%)	320 (75.5%)	424	98 (25.5%)	287 (74.5%)	385	+4.7	+15.3
Bachelor of Science (Arch)	31 (72.1%)	12 (27.9%)	43	20 (60.6%)	13 (39.4%)	33	30 (81.1%)	7 (18.9%)	37	+30.3	+16.2
Bachelor of Software Engr	1 (6.3%)	15 (93.8%)	16	1 (16.7%)	5 (83.3%)	6	0 (0.0%)	0 (0.0%)	0	+166.7	-
Total Degrees	150 (29.8%)	353 (70.2%)	503	125 (27.0%)	338 (73.0%)	463	128 (30.3%)	294 (69.7%)	422	+8.6	+19.2
Total Undergraduate	150 (29.8%)	353 (70.2%)	503	125 (27.0%)	338 (73.0%)	463	128 (30.3%)	294 (69.7%)	422	+8.6	+19.2
Graduate											
Masters											
Master of Architecture	33 (57.9%)	24 (42.1%)	57	35 (58.3%)	25 (41.7%)	60	48 (65.8%)	25 (34.2%)	73	-5.0	-21.9
Master of Engineering	37 (29.8%)	87 (70.2%)	124	39 (26.9%)	106 (73.1%)	145	42 (22.2%)	147 (77.8%)	189	-14.5	-34.4
Master of Science	1 (16.7%)	5 (83.3%)	6	0 (0.0%)	2 (100.0%)	2	0 (0.0%)	2 (100.0%)	2	+200.0	+200.0
Master of Urban Planning	6 (33.3%)	12 (66.7%)	18	11 (50.0%)	11 (50.0%)	22	11 (61.1%)	7 (38.9%)	18	-18.2	0.0
Total Masters	77 (37.6%)	128 (62.4%)	205	85 (37.1%)	144 (62.9%)	229	101 (35.8%)	181 (64.2%)	282	-10.5	-27.3
Doctoral											

Graduation Statistics Report
by Faculty, by Degree and by Gender

Date: 30-OCT-07

Page 17 of 30

	2006-2007 academic year			2005-2006 academic year			2004-2005 academic year			% Change (1 Years)	% Change (3 Years)
	Female	Male	Total	Female	Male	Total	Female	Male	Total		
Doctor of Philosophy	12 (21.8%)	43 (78.2%)	55	10 (17.9%)	46 (82.1%)	56	5 (16.7%)	25 (83.3%)	30	-1.8	+83.3
Total Doctoral	12 (21.8%)	43 (78.2%)	55	10 (17.9%)	46 (82.1%)	56	5 (16.7%)	25 (83.3%)	30	-1.8	+83.3
Total Masters and Doctoral	89 (34.2%)	171 (65.8%)	260	95 (33.3%)	190 (66.7%)	285	106 (34.0%)	206 (66.0%)	312	-8.8	-16.7
Total Graduate	89 (34.2%)	171 (65.8%)	260	95 (33.3%)	190 (66.7%)	285	106 (34.0%)	206 (66.0%)	312	-8.8	-16.7
Total Faculty of Engineering	239 (31.3%)	524 (68.7%)	763	220 (29.4%)	528 (70.6%)	748	234 (31.9%)	500 (68.1%)	734	+2.0	+4.0

Graduation Statistics Report
by Faculty, by Degree and by Gender

Date: 30-OCT-07

Page 18 of 30

		2006-2007 academic year			2005-2006 academic year			2004-2005 academic year			% Change (1 Years)	% Change (3 Years)
		Female	Male	Total	Female	Male	Total	Female	Male	Total		
Faculty of Law												
Undergraduate												
Degrees												
	Bach of Civil Law Bach of Laws	86 (50.3%)	85 (49.7%)	171	87 (56.1%)	68 (43.9%)	155	98 (58.7%)	69 (41.3%)	167	+10.3	+2.4
	Total Degrees	86 (50.3%)	85 (49.7%)	171	87 (56.1%)	68 (43.9%)	155	98 (58.7%)	69 (41.3%)	167	+10.3	+2.4
	Total Undergraduate	86 (50.3%)	85 (49.7%)	171	87 (56.1%)	68 (43.9%)	155	98 (58.7%)	69 (41.3%)	167	+10.3	+2.4
Graduate												
Masters												
	Master of Laws	24 (45.3%)	29 (54.7%)	53	30 (46.9%)	34 (53.1%)	64	33 (61.1%)	21 (38.9%)	54	-17.2	-1.9
	Total Masters	24 (45.3%)	29 (54.7%)	53	30 (46.9%)	34 (53.1%)	64	33 (61.1%)	21 (38.9%)	54	-17.2	-1.9
Doctoral												
	Doctor of Civil Law	1 (33.3%)	2 (66.7%)	3	1 (25.0%)	3 (75.0%)	4	2 (40.0%)	3 (60.0%)	5	-25.0	-40.0
	Total Doctoral	1 (33.3%)	2 (66.7%)	3	1 (25.0%)	3 (75.0%)	4	2 (40.0%)	3 (60.0%)	5	-25.0	-40.0
	Total Masters and Doctoral	25 (44.6%)	31 (55.4%)	56	31 (45.6%)	37 (54.4%)	68	35 (59.3%)	24 (40.7%)	59	-17.6	-5.1
Other Graduate												
Certificates, Diplomas												

Graduation Statistics Report
by Faculty, by Degree and by Gender

Date: 30-OCT-07

Page 19 of 30

	2006-2007 academic year			2005-2006 academic year			2004-2005 academic year			% Change (1 Years)	% Change (3 Years)
	Female	Male	Total	Female	Male	Total	Female	Male	Total		
Gr Cert Air and Space Law	0 (0.0%)	0 (0.0%)	0	0 (0.0%)	1 (100.0%)	1	0 (0.0%)	1 (100.0%)	1	-100.0	-100.0
Gr Cert in Comparative Law	1 (50.0%)	1 (50.0%)	2	0 (0.0%)	0 (0.0%)	0	2 (50.0%)	2 (50.0%)	4	-	-50.0
Total Certificates, Diplomas	1 (50.0%)	1 (50.0%)	2	0 (0.0%)	1 (100.0%)	1	2 (40.0%)	3 (60.0%)	5	+100.0	-60.0
Total Other Graduate	1 (50.0%)	1 (50.0%)	2	0 (0.0%)	1 (100.0%)	1	2 (40.0%)	3 (60.0%)	5	+100.0	-60.0
Total Graduate	26 (44.8%)	32 (55.2%)	58	31 (44.9%)	38 (55.1%)	69	37 (57.8%)	27 (42.2%)	64	-15.9	-9.4
Total Faculty of Law	112 (48.9%)	117 (51.1%)	229	118 (52.7%)	106 (47.3%)	224	135 (58.4%)	96 (41.6%)	231	+2.2	-0.9

Graduation Statistics Report
by Faculty, by Degree and by Gender

Date: 30-OCT-07
Page 20 of 30

	2006-2007 academic year			2005-2006 academic year			2004-2005 academic year			% Change (1 Years)	% Change (3 Years)
	Female	Male	Total	Female	Male	Total	Female	Male	Total		
Faculty of Medicine											
Undergraduate											
Degrees											
B SC (Occupational Therapy)	43 (89.6%)	5 (10.4%)	48	53 (93.0%)	4 (7.0%)	57	35 (87.5%)	5 (12.5%)	40	-15.8	+20.0
B SC (Physical Therapy)	33 (63.5%)	19 (36.5%)	52	45 (78.9%)	12 (21.1%)	57	45 (90.0%)	5 (10.0%)	50	-8.8	+4.0
Bachelor of Nursing	48 (96.0%)	2 (4.0%)	50	21 (95.5%)	1 (4.5%)	22	7 (100.0%)	0 (0.0%)	7	+127.3	+614.3
Bachelor of Science (Nursing)	47 (88.7%)	6 (11.3%)	53	41 (93.2%)	3 (6.8%)	44	48 (92.3%)	4 (7.7%)	52	+20.5	+1.9
MDCM	96 (61.5%)	60 (38.5%)	156	72 (48.6%)	76 (51.4%)	148	66 (48.9%)	69 (51.1%)	135	+5.4	+15.6
Total Degrees	267 (74.4%)	92 (25.6%)	359	232 (70.7%)	96 (29.3%)	328	201 (70.8%)	83 (29.2%)	284	+9.5	+26.4
Total Undergraduate	267 (74.4%)	92 (25.6%)	359	232 (70.7%)	96 (29.3%)	328	201 (70.8%)	83 (29.2%)	284	+9.5	+26.4
Graduate											
Masters											
Master of Engineering	3 (60.0%)	2 (40.0%)	5	8 (36.4%)	14 (63.6%)	22	6 (60.0%)	4 (40.0%)	10	-77.3	-50.0
Master of Science	83 (62.9%)	49 (37.1%)	132	89 (61.8%)	55 (38.2%)	144	88 (61.5%)	55 (38.5%)	143	-8.3	-7.7
Master of Science Applied	50 (89.3%)	6 (10.7%)	56	42 (82.4%)	9 (17.6%)	51	42 (91.3%)	4 (8.7%)	46	+9.8	+21.7
Total Masters	136 (70.5%)	57 (29.5%)	193	139 (64.1%)	78 (35.9%)	217	136 (68.3%)	63 (31.7%)	199	-11.1	-3.0

Graduation Statistics Report
by Faculty, by Degree and by Gender

Date: 30-OCT-07

Page 21 of 30

	2006-2007 academic year			2005-2006 academic year			2004-2005 academic year			% Change (1 Years)	% Change (3 Years)
	Female	Male	Total	Female	Male	Total	Female	Male	Total		
Doctoral											
Doctor of Philosophy	69 (61.1%)	44 (38.9%)	113	51 (52.0%)	47 (48.0%)	98	42 (48.8%)	44 (51.2%)	86	+15.3	+31.4
Total Doctoral	69 (61.1%)	44 (38.9%)	113	51 (52.0%)	47 (48.0%)	98	42 (48.8%)	44 (51.2%)	86	+15.3	+31.4
Total Masters and Doctoral	205 (67.0%)	101 (33.0%)	306	190 (60.3%)	125 (39.7%)	315	178 (62.5%)	107 (37.5%)	285	-2.9	+7.4
Other Graduate											
Certificates, Diplomas											
Gr Cert in Assessing Driv Cap	7 (87.5%)	1 (12.5%)	8	0 (0.0%)	0 (0.0%)	0	0 (0.0%)	0 (0.0%)	0	-	-
Gr Dip Child Psychiat	1 (100.0%)	0 (0.0%)	1	0 (0.0%)	0 (0.0%)	0	1 (50.0%)	1 (50.0%)	2	-	-50.0
Gr Dip in Clinical Research	3 (42.9%)	4 (57.1%)	7	3 (75.0%)	1 (25.0%)	4	0 (0.0%)	0 (0.0%)	0	+75.0	-
Gr Dip in Epidemiol & Health	0 (0.0%)	0 (0.0%)	0	0 (0.0%)	1 (100.0%)	1	0 (0.0%)	0 (0.0%)	0	-100.0	0.0
Total Certificates, Diplomas	11 (68.8%)	5 (31.3%)	16	3 (60.0%)	2 (40.0%)	5	1 (50.0%)	1 (50.0%)	2	+220.0	+700.0
Total Other Graduate	11 (68.8%)	5 (31.3%)	16	3 (60.0%)	2 (40.0%)	5	1 (50.0%)	1 (50.0%)	2	+220.0	+700.0
Total Graduate	216 (67.1%)	106 (32.9%)	322	193 (60.3%)	127 (39.7%)	320	179 (62.4%)	108 (37.6%)	287	+0.6	+12.2
Total Faculty of Medicine	483 (70.9%)	198 (29.1%)	681	425 (65.6%)	223 (34.4%)	648	380 (66.5%)	191 (33.5%)	571	+5.1	+19.3

Graduation Statistics Report
by Faculty, by Degree and by Gender

Date: 30-OCT-07

Page 22 of 30

	2006-2007 academic year			2005-2006 academic year			2004-2005 academic year			% Change (1 Years)	% Change (3 Years)
	Female	Male	Total	Female	Male	Total	Female	Male	Total		
Desautels Faculty of Management											
Undergraduate											
Degrees											
Bachelor of Commerce	276 (49.9%)	277 (50.1%)	553	300 (53.2%)	264 (46.8%)	564	284 (56.2%)	221 (43.8%)	505	-2.0	+9.5
Total Degrees	276 (49.9%)	277 (50.1%)	553	300 (53.2%)	264 (46.8%)	564	284 (56.2%)	221 (43.8%)	505	-2.0	+9.5
Total Undergraduate	276 (49.9%)	277 (50.1%)	553	300 (53.2%)	264 (46.8%)	564	284 (56.2%)	221 (43.8%)	505	-2.0	+9.5
Graduate											
Masters											
Master of Business Admin	64 (30.9%)	143 (69.1%)	207	57 (27.7%)	149 (72.3%)	206	67 (30.5%)	153 (69.5%)	220	+0.5	-5.9
Master of Management	2 (12.5%)	14 (87.5%)	16	5 (17.9%)	23 (82.1%)	28	6 (18.2%)	27 (81.8%)	33	-42.9	-51.5
Total Masters	66 (29.6%)	157 (70.4%)	223	62 (26.5%)	172 (73.5%)	234	73 (28.9%)	180 (71.1%)	253	-4.7	-11.9
Doctoral											
Doctor of Philosophy	2 (22.2%)	7 (77.8%)	9	2 (50.0%)	2 (50.0%)	4	1 (14.3%)	6 (85.7%)	7	+125.0	+28.6
Total Doctoral	2 (22.2%)	7 (77.8%)	9	2 (50.0%)	2 (50.0%)	4	1 (14.3%)	6 (85.7%)	7	+125.0	+28.6
Total Masters and Doctoral	68 (29.3%)	164 (70.7%)	232	64 (26.9%)	174 (73.1%)	238	74 (28.5%)	186 (71.5%)	260	-2.5	-10.8
Other Graduate											
Certificates, Diplomas											

Graduation Statistics Report
by Faculty, by Degree and by Gender

Date: 30-OCT-07

Page 23 of 30

	2006-2007 academic year			2005-2006 academic year			2004-2005 academic year			% Change (1 Years)	% Change (3 Years)
	Female	Male	Total	Female	Male	Total	Female	Male	Total		
Gr Dip in Public Accountancy	13 (50.0%)	13 (50.0%)	26	9 (60.0%)	6 (40.0%)	15	4 (80.0%)	1 (20.0%)	5	+73.3	+420.0
Post MBA Gr Cert	4 (33.3%)	8 (66.7%)	12	4 (33.3%)	8 (66.7%)	12	2 (13.3%)	13 (86.7%)	15	0.0	-20.0
Total Certificates, Diplomas	17 (44.7%)	21 (55.3%)	38	13 (48.1%)	14 (51.9%)	27	6 (30.0%)	14 (70.0%)	20	+40.7	+90.0
Total Other Graduate	17 (44.7%)	21 (55.3%)	38	13 (48.1%)	14 (51.9%)	27	6 (30.0%)	14 (70.0%)	20	+40.7	+90.0
Total Graduate	85 (31.5%)	185 (68.5%)	270	77 (29.1%)	188 (70.9%)	265	80 (28.6%)	200 (71.4%)	280	+1.9	-3.6
Total Desautels Faculty Management	361 (43.9%)	462 (56.1%)	823	377 (45.5%)	452 (54.5%)	829	364 (46.4%)	421 (53.6%)	785	-0.7	+4.8

Graduation Statistics Report
by Faculty, by Degree and by Gender

Date: 30-OCT-07

Page 24 of 30

	2006-2007 academic year			2005-2006 academic year			2004-2005 academic year			% Change (1 Years)	% Change (3 Years)
	Female	Male	Total	Female	Male	Total	Female	Male	Total		
Schulich School of Music											
Undergraduate											
Degrees											
Bachelor of Music	72 (54.5%)	60 (45.5%)	132	50 (56.8%)	38 (43.2%)	88	51 (45.1%)	62 (54.9%)	113	+50.0	+16.8
Licentiate in Music	2 (40.0%)	3 (60.0%)	5	9 (81.8%)	2 (18.2%)	11	5 (83.3%)	1 (16.7%)	6	-54.5	-16.7
Total Degrees	74 (54.0%)	63 (46.0%)	137	59 (59.6%)	40 (40.4%)	99	56 (47.1%)	63 (52.9%)	119	+38.4	+15.1
Certificates, Diplomas											
Artist Diploma	4 (66.7%)	2 (33.3%)	6	4 (66.7%)	2 (33.3%)	6	4 (66.7%)	2 (33.3%)	6	0.0	0.0
Total Certificates, Diplomas	4 (66.7%)	2 (33.3%)	6	4 (66.7%)	2 (33.3%)	6	4 (66.7%)	2 (33.3%)	6	0.0	0.0
Total Undergraduate	78 (54.5%)	65 (45.5%)	143	63 (60.0%)	42 (40.0%)	105	60 (48.0%)	65 (52.0%)	125	+36.2	+14.4
Graduate											
Masters											
Master of Arts	7 (46.7%)	8 (53.3%)	15	6 (60.0%)	4 (40.0%)	10	6 (60.0%)	4 (40.0%)	10	+50.0	+50.0
Master of Music	29 (51.8%)	27 (48.2%)	56	37 (58.7%)	26 (41.3%)	63	23 (41.1%)	33 (58.9%)	56	-11.1	0.0
Total Masters	36 (50.7%)	35 (49.3%)	71	43 (58.9%)	30 (41.1%)	73	29 (43.9%)	37 (56.1%)	66	-2.7	+7.6
Doctoral											

Graduation Statistics Report
by Faculty, by Degree and by Gender

Date: 30-OCT-07
Page 25 of 30

	2006-2007 academic year			2005-2006 academic year			2004-2005 academic year			% Change (1 Years)	% Change (3 Years)
	Female	Male	Total	Female	Male	Total	Female	Male	Total		
Doctor of Music	1 (50.0%)	1 (50.0%)	2	5 (100.0%)	0 (0.0%)	5	4 (44.4%)	5 (55.6%)	9	-60.0	-77.8
Doctor of Philosophy	4 (80.0%)	1 (20.0%)	5	0 (0.0%)	1 (100.0%)	1	2 (66.7%)	1 (33.3%)	3	+400.0	+66.7
Total Doctoral	5 (71.4%)	2 (28.6%)	7	5 (83.3%)	1 (16.7%)	6	6 (50.0%)	6 (50.0%)	12	+16.7	-41.7
Total Masters and Doctoral	41 (52.6%)	37 (47.4%)	78	48 (60.8%)	31 (39.2%)	79	35 (44.9%)	43 (55.1%)	78	-1.3	0.0
Total Graduate	41 (52.6%)	37 (47.4%)	78	48 (60.8%)	31 (39.2%)	79	35 (44.9%)	43 (55.1%)	78	-1.3	0.0
Total Schulich School of Music	119 (53.8%)	102 (46.2%)	221	111 (60.3%)	73 (39.7%)	184	95 (46.8%)	108 (53.2%)	203	+20.1	+8.9

Graduation Statistics Report
by Faculty, by Degree and by Gender

Date: 30-OCT-07

Page 26 of 30

	2006-2007 academic year			2005-2006 academic year			2004-2005 academic year			% Change (1 Years)	% Change (3 Years)
	Female	Male	Total	Female	Male	Total	Female	Male	Total		
Faculty of Religious Studies											
Undergraduate											
Degrees											
Bachelor of Theology	4 (57.1%)	3 (42.9%)	7	3 (33.3%)	6 (66.7%)	9	5 (41.7%)	7 (58.3%)	12	-22.2	-41.7
Total Degrees	4 (57.1%)	3 (42.9%)	7	3 (33.3%)	6 (66.7%)	9	5 (41.7%)	7 (58.3%)	12	-22.2	-41.7
Total Undergraduate	4 (57.1%)	3 (42.9%)	7	3 (33.3%)	6 (66.7%)	9	5 (41.7%)	7 (58.3%)	12	-22.2	-41.7
Graduate											
Masters											
Master of Arts	4 (66.7%)	2 (33.3%)	6	4 (40.0%)	6 (60.0%)	10	6 (54.5%)	5 (45.5%)	11	-40.0	-45.5
Master of Sacred Theology	1 (50.0%)	1 (50.0%)	2	0 (0.0%)	2 (100.0%)	2	3 (100.0%)	0 (0.0%)	3	0.0	-33.3
Total Masters	5 (62.5%)	3 (37.5%)	8	4 (33.3%)	8 (66.7%)	12	9 (64.3%)	5 (35.7%)	14	-33.3	-42.9
Doctoral											
Doctor of Philosophy	1 (20.0%)	4 (80.0%)	5	0 (0.0%)	4 (100.0%)	4	2 (66.7%)	1 (33.3%)	3	+25.0	+66.7
Total Doctoral	1 (20.0%)	4 (80.0%)	5	0 (0.0%)	4 (100.0%)	4	2 (66.7%)	1 (33.3%)	3	+25.0	+66.7
Total Masters and Doctoral	6 (46.2%)	7 (53.8%)	13	4 (25.0%)	12 (75.0%)	16	11 (64.7%)	6 (35.3%)	17	-18.8	-23.5
Total Graduate	6 (46.2%)	7 (53.8%)	13	4 (25.0%)	12 (75.0%)	16	11 (64.7%)	6 (35.3%)	17	-18.8	-23.5
Total Faculty of Religious Studies	10 (50.0%)	10 (50.0%)	20	7 (28.0%)	18 (72.0%)	25	16 (55.2%)	13 (44.8%)	29	-20.0	-31.0

Graduation Statistics Report
by Faculty, by Degree and by Gender

Date: 30-OCT-07

Page 27 of 30

	2006-2007 academic year			2005-2006 academic year			2004-2005 academic year			% Change (1 Years)	% Change (3 Years)
	Female	Male	Total	Female	Male	Total	Female	Male	Total		
Faculty of Science											
Undergraduate											
Degrees											
Bachelor of Science	529 (60.0%)	352 (40.0%)	881	540 (61.2%)	342 (38.8%)	882	501 (57.7%)	367 (42.3%)	868	-0.1	+1.5
Total Degrees	529 (60.0%)	352 (40.0%)	881	540 (61.2%)	342 (38.8%)	882	501 (57.7%)	367 (42.3%)	868	-0.1	+1.5
Certificates, Diplomas											
Diploma in Environment	2 (66.7%)	1 (33.3%)	3	2 (66.7%)	1 (33.3%)	3	1 (50.0%)	1 (50.0%)	2	0.0	+50.0
Diploma in Meteorology	0 (0.0%)	1 (100.0%)	1	1 (100.0%)	0 (0.0%)	1	1 (50.0%)	1 (50.0%)	2	0.0	-50.0
Total Certificates, Diplomas	2 (50.0%)	2 (50.0%)	4	3 (75.0%)	1 (25.0%)	4	2 (50.0%)	2 (50.0%)	4	0.0	0.0
Total Undergraduate	531 (60.0%)	354 (40.0%)	885	543 (61.3%)	343 (38.7%)	886	503 (57.7%)	369 (42.3%)	872	-0.1	+1.5
Graduate											
Masters											
Master of Arts	2 (28.6%)	5 (71.4%)	7	3 (75.0%)	1 (25.0%)	4	5 (55.6%)	4 (44.4%)	9	+75.0	-22.2
Master of Science	49 (40.2%)	73 (59.8%)	122	56 (41.5%)	79 (58.5%)	135	43 (34.4%)	82 (65.6%)	125	-9.6	-2.4
Master of Science Applied	0 (0.0%)	1 (100.0%)	1	0 (0.0%)	0 (0.0%)	0	0 (0.0%)	1 (100.0%)	1	-	0.0
Total Masters	51 (39.2%)	79 (60.8%)	130	59 (42.4%)	80 (57.6%)	139	48 (35.6%)	87 (64.4%)	135	-6.5	-3.7
Doctoral											

Graduation Statistics Report
by Faculty, by Degree and by Gender

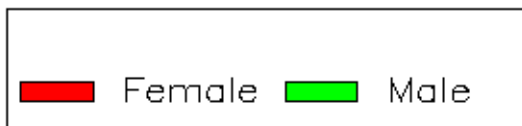
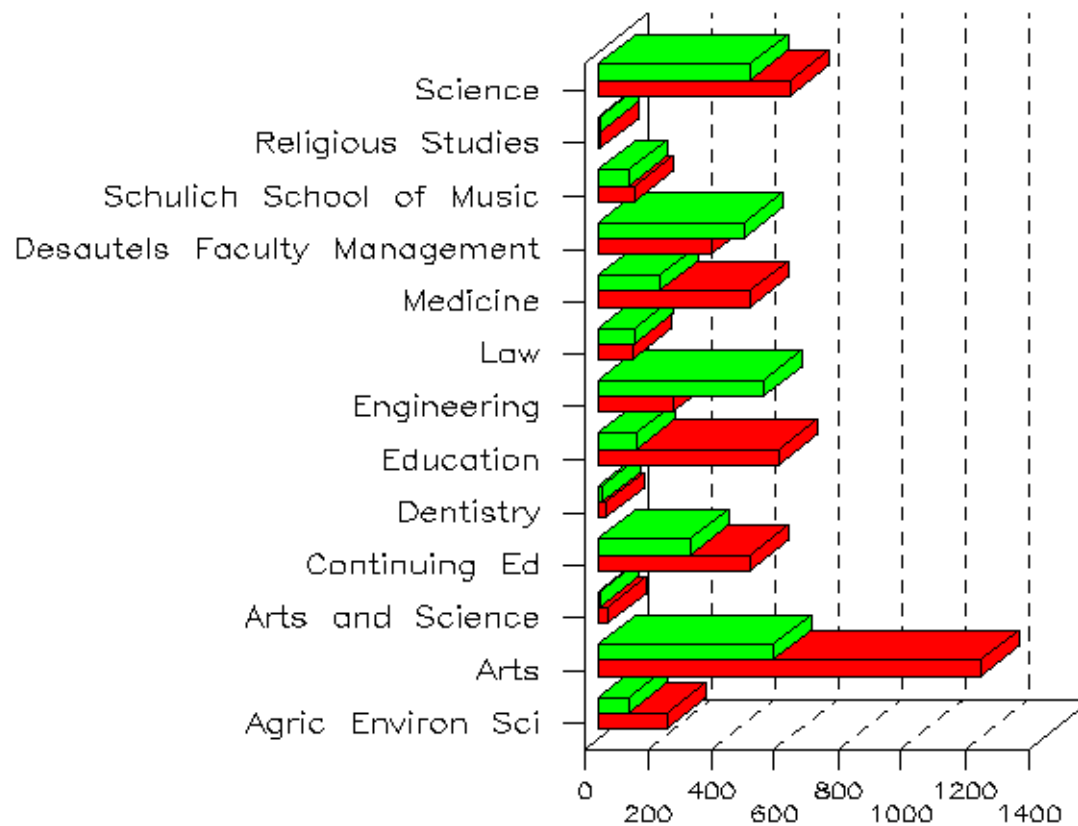
Date: 30-OCT-07

Page 28 of 30

	2006-2007 academic year			2005-2006 academic year			2004-2005 academic year			% Change (1 Years)	% Change (3 Years)
	Female	Male	Total	Female	Male	Total	Female	Male	Total		
Doctor of Philosophy	25 (34.7%)	47 (65.3%)	72	20 (32.8%)	41 (67.2%)	61	22 (32.8%)	45 (67.2%)	67	+18.0	+7.5
Total Doctoral	25 (34.7%)	47 (65.3%)	72	20 (32.8%)	41 (67.2%)	61	22 (32.8%)	45 (67.2%)	67	+18.0	+7.5
Total Masters and Doctoral	76 (37.6%)	126 (62.4%)	202	79 (39.5%)	121 (60.5%)	200	70 (34.7%)	132 (65.3%)	202	+1.0	0.0
Total Graduate	76 (37.6%)	126 (62.4%)	202	79 (39.5%)	121 (60.5%)	200	70 (34.7%)	132 (65.3%)	202	+1.0	0.0
Total Faculty of Science	607 (55.8%)	480 (44.2%)	1,087	622 (57.3%)	464 (42.7%)	1,086	573 (53.4%)	501 (46.6%)	1,074	+0.1	+1.2

Graduation Statistics Report
by Faculty, by Degree and by Gender

Graduation Statistics Chart
by Faculty and by Gender
2006-2007 academic year



Graduation Statistics Report
by Faculty, by Degree and by Gender

Undergraduate numbers are based on "levels" that are defined as: Undergraduate, Dentistry/Law/Medicine.

Graduate numbers are based on "levels" that are defined as: Masters, Graduate Diplomas and Certificates, Doctorate, Graduate Qualifying.

Residents and Fellows numbers are based on "levels" that are defined as: Post Graduate Medicine/Dentistry.

Totals are based on degrees - a student with two degrees is counted twice.

"Faculties of Arts and Science" includes students that are registered in both Arts and Science and are pursuing the B.A.&Sc. degree.

The SUMMARY now appears in the first part of the report and is a COUNT for all students and the following pages contains a DETAILED breakdown.

2006-2007 academic year includes: Fall 2006, Winter 2007 and Summer 2007.

2005-2006 academic year includes: Fall 2005, Winter 2006 and Summer 2006.

2004-2005 academic year includes: Fall 2004, Winter 2005 and Summer 2005.

Note: 2006-2007 graduation totals based on October 29, 2007.
2005-2006 graduation totals based on October 29, 2007.
2004-2005 graduation totals based on October 29, 2007.