



2018 Health Care in Canada Survey

A National Survey of Health Care Providers, Managers and the Public

Selected Results

August 22, 2018

<https://www.mcgill.ca/hcic-sssc/>



Disclaimer

The information herein being shared is for educational purposes and is not intended for publication without the prior consent of the Health Care in Canada Knowledge Translation Committee.

Contact coordinate: hcic@mcgill.ca



HCIC Members 2018

- Canadian Cancer Society (CCS)
- Canadian Home Care Association (CHCA)
- Canadian Hospice Palliative Care Association (CHPCA)
- Canadian Medical Association (CMA)
- Canadian Nurses Association (CNA)
- Canadian Pharmacists Association (CPhA)
- Constance Lethbridge Rehabilitation Center (McGill University)
- Health Charities Coalition of Canada (HCCC)
- HealthCareCAN
- Innovative Medicines Canada
- Institute of Health Economics (IHE)
- Merck Canada
- Studer Group Canada
- POLLARA
- **CareNet** / Strive Health

<https://www.mcgill.ca/hcic-sssc/about-us>

3

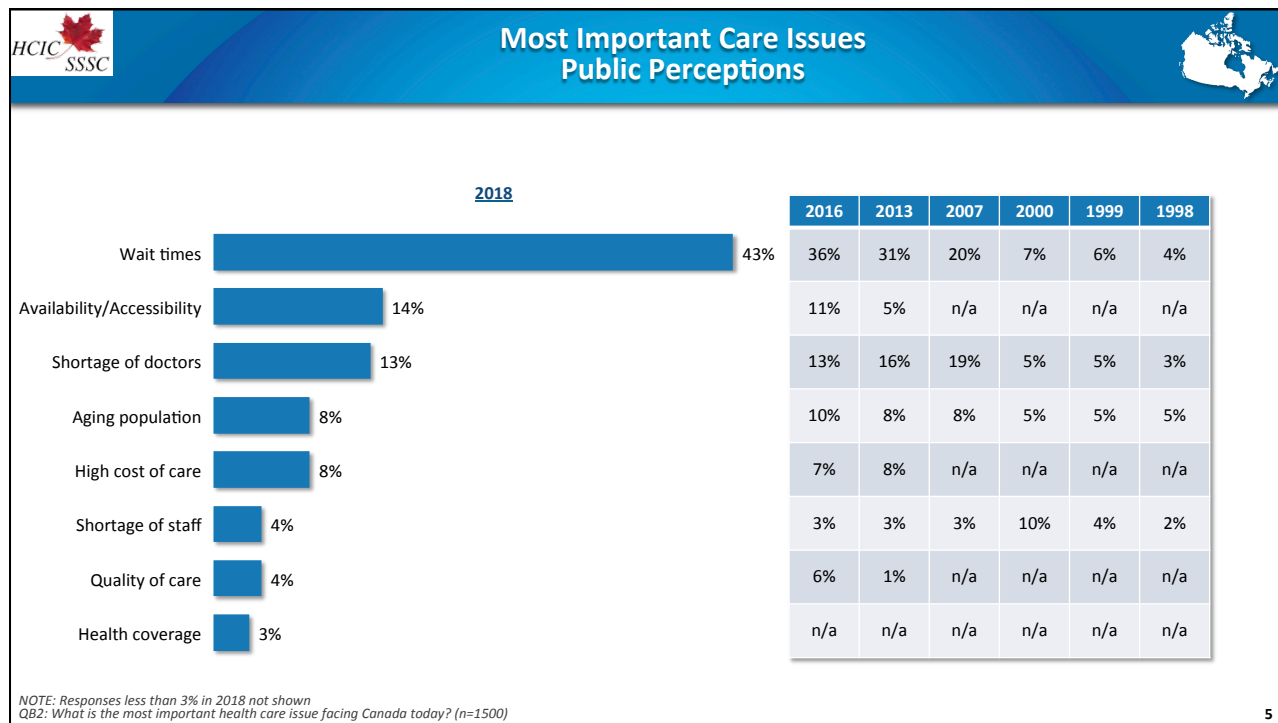


Methodology

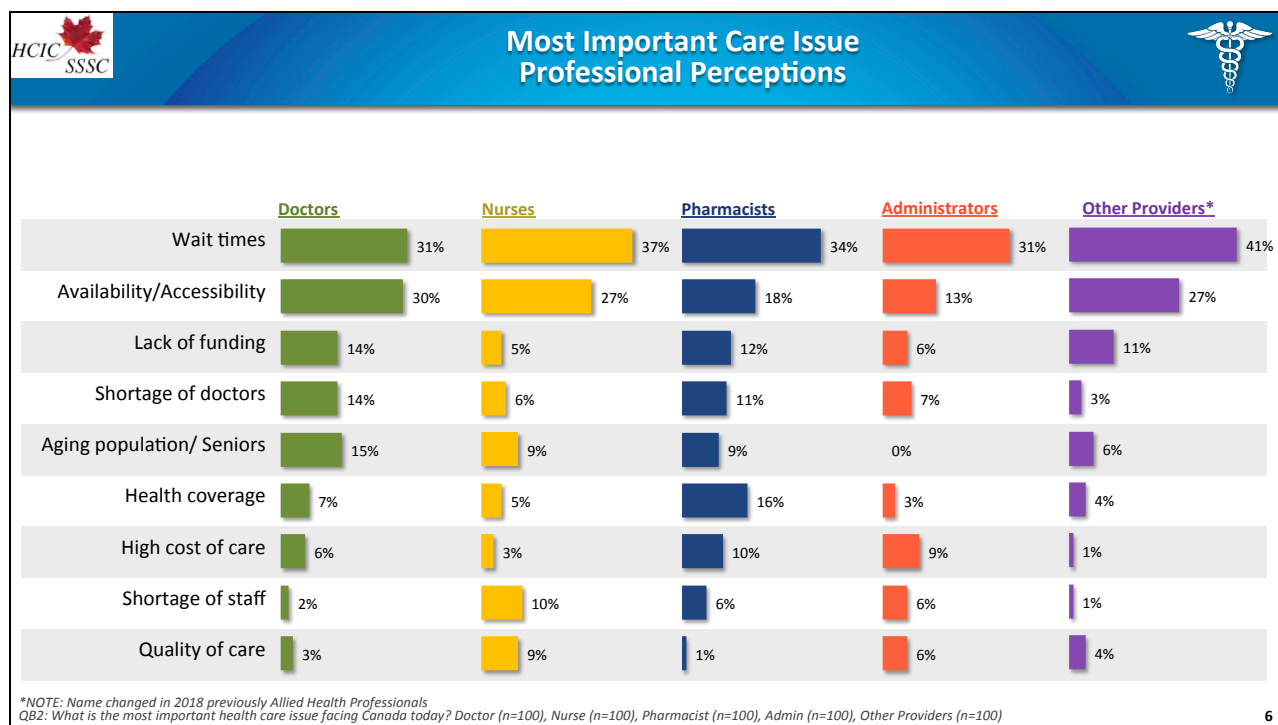
- Results derived from online survey questionnaires (POLLARA)
- Conducted April to May 2018
- With nationally representative samples of:
 - Canadian adult public, doctors, nurses, pharmacists, administrators, other health care providers (including nutritionists/dietitians, occupational therapists, physical therapists, psychologists and social workers.)
- As a guideline, margins of error for comparable probability samples for each sample group are illustrated below:

Groups	Sample Size	<u>Comparable</u> Margin of Error
Public	1500	± 2.5%
Doctors	100	± 9.8%
Nurses	100	± 9.8%
Pharmacists	100	± 9.8%
Administrators	100	± 9.8%
Other Providers	100	n/a

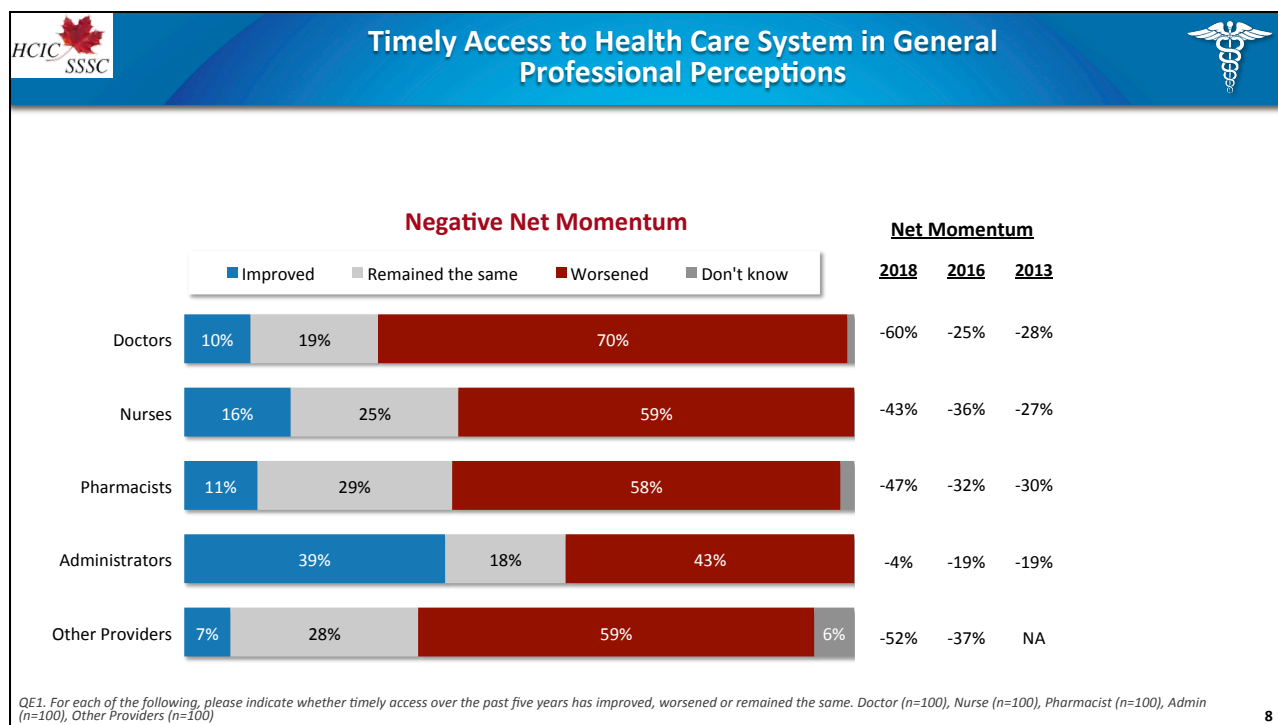
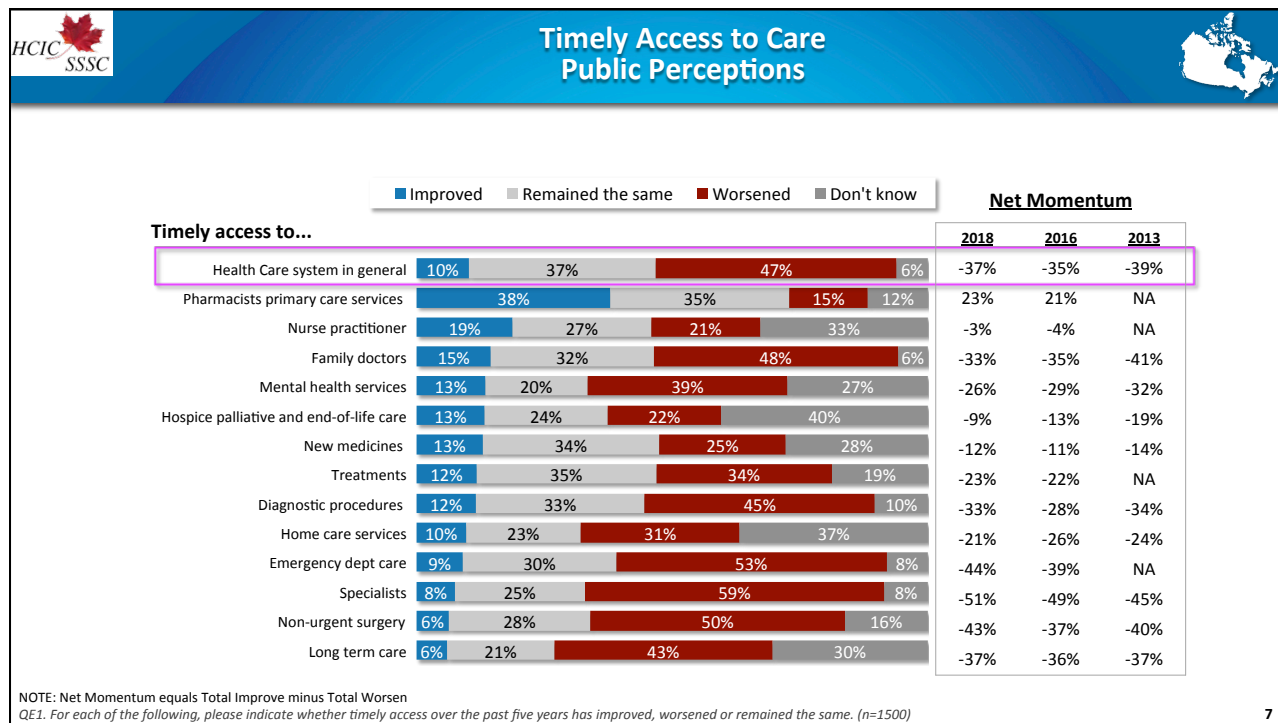
4

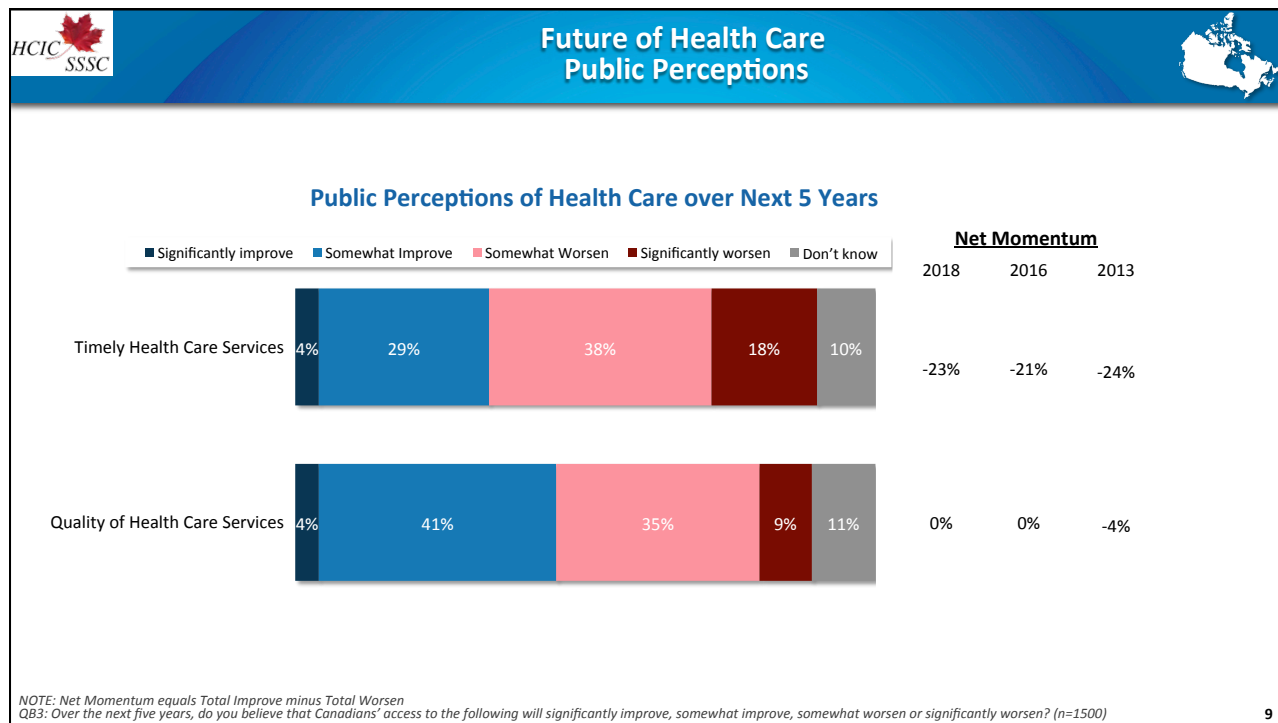


5

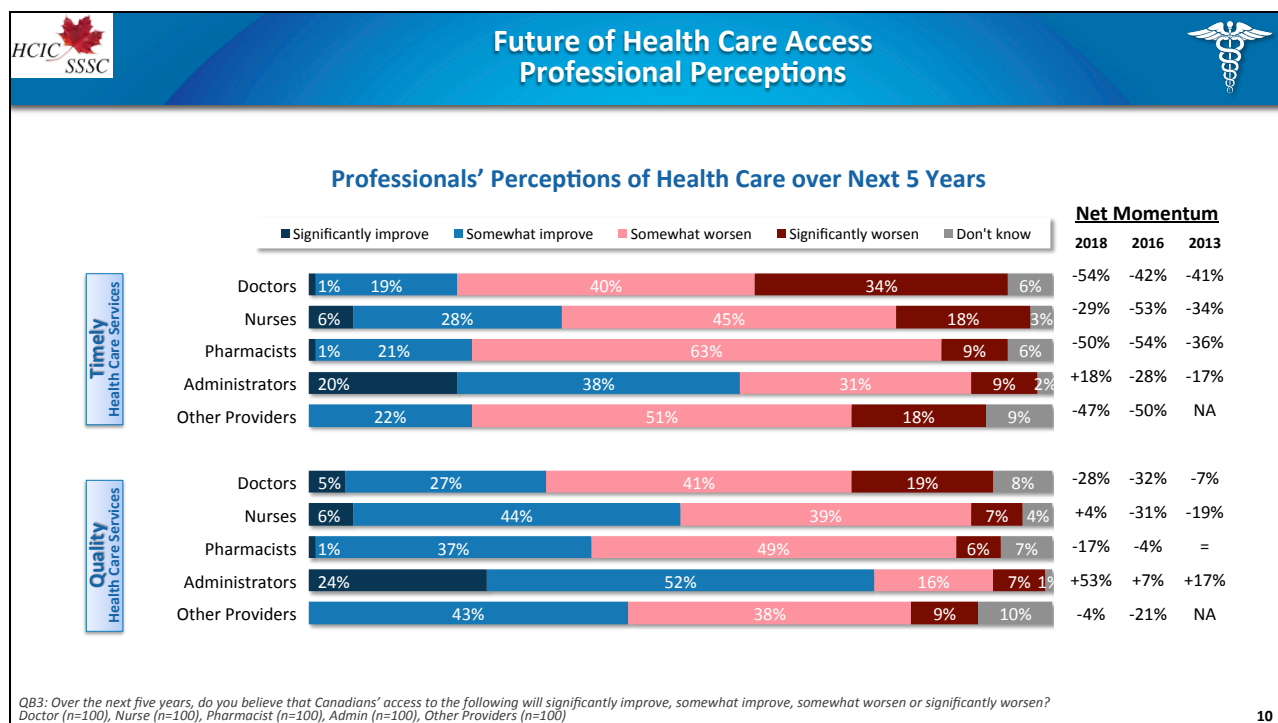


6

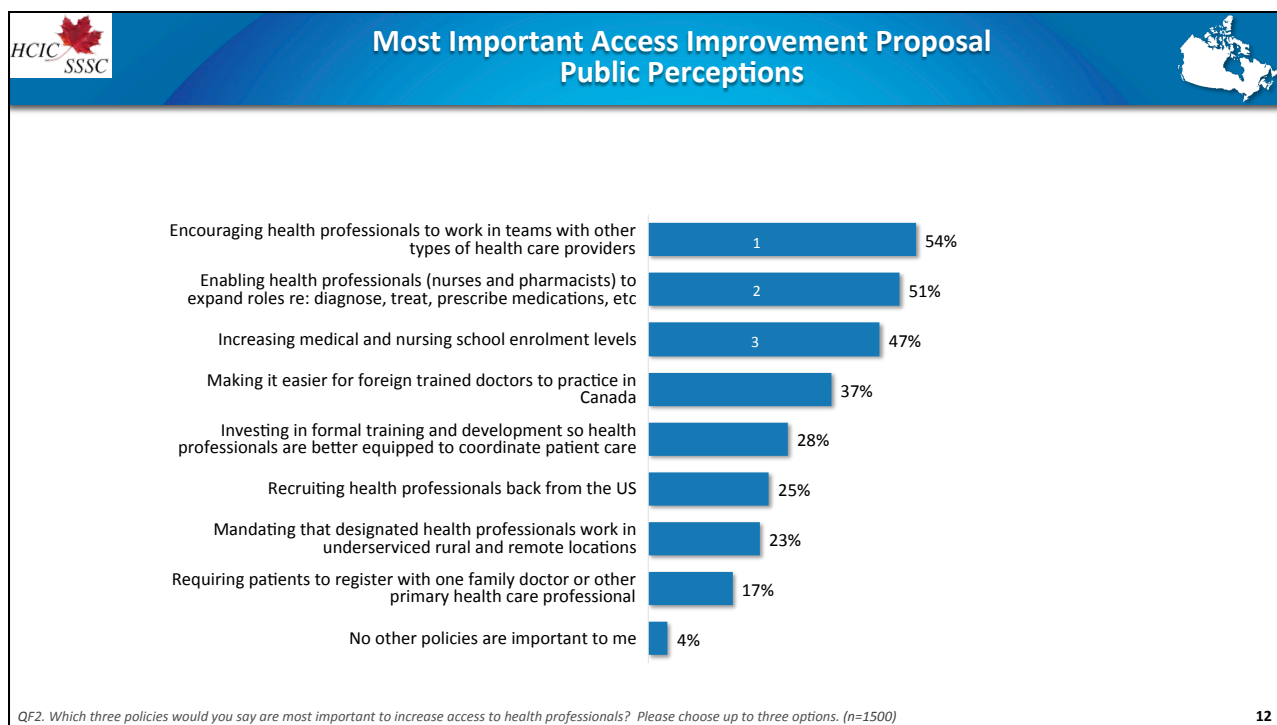
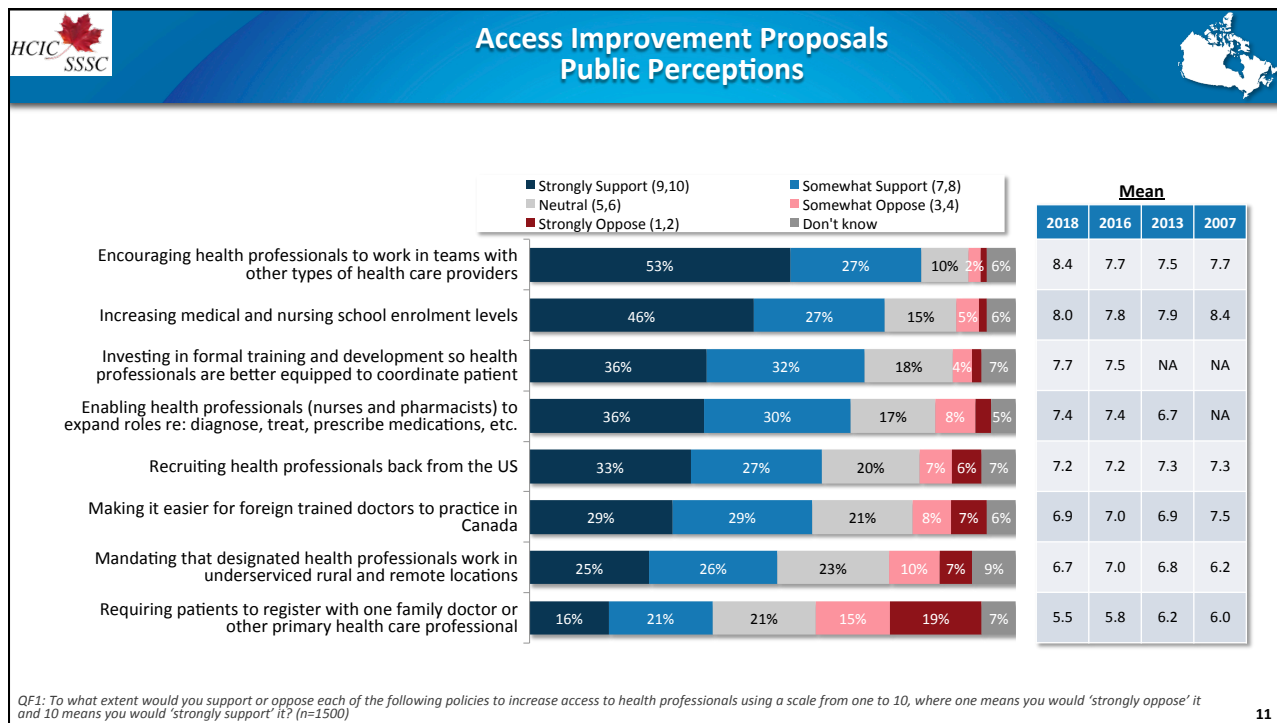


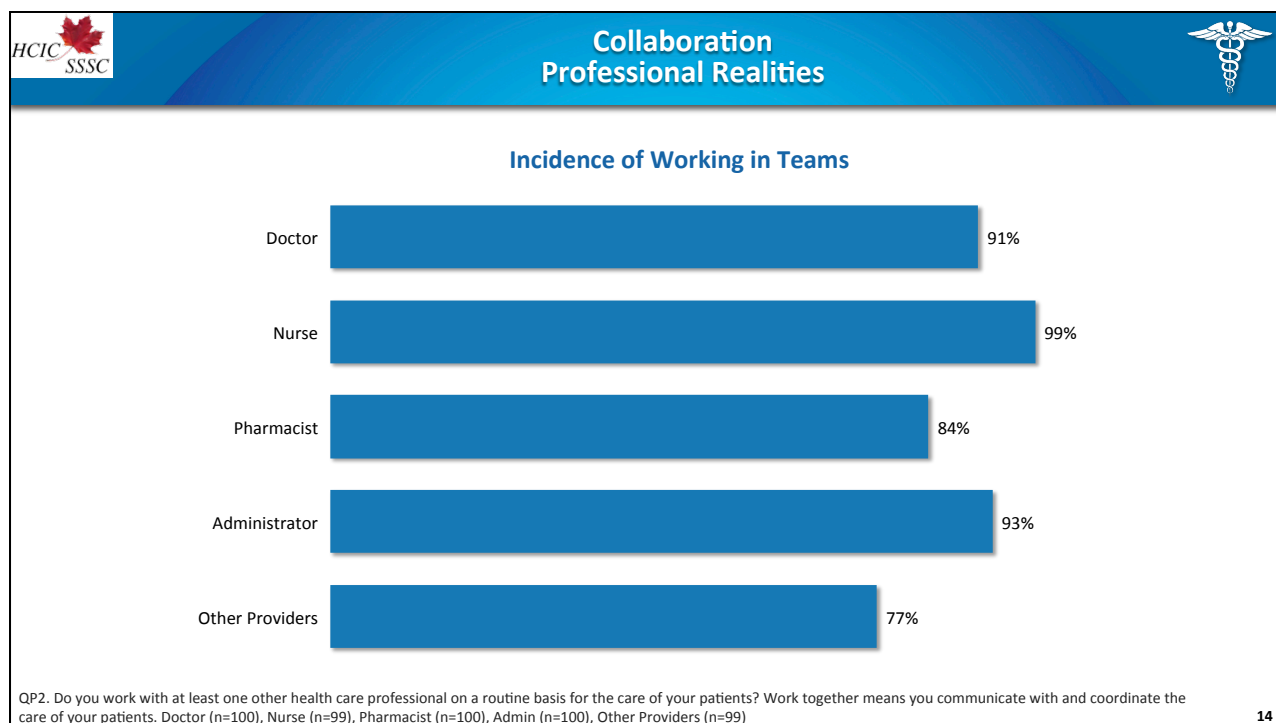
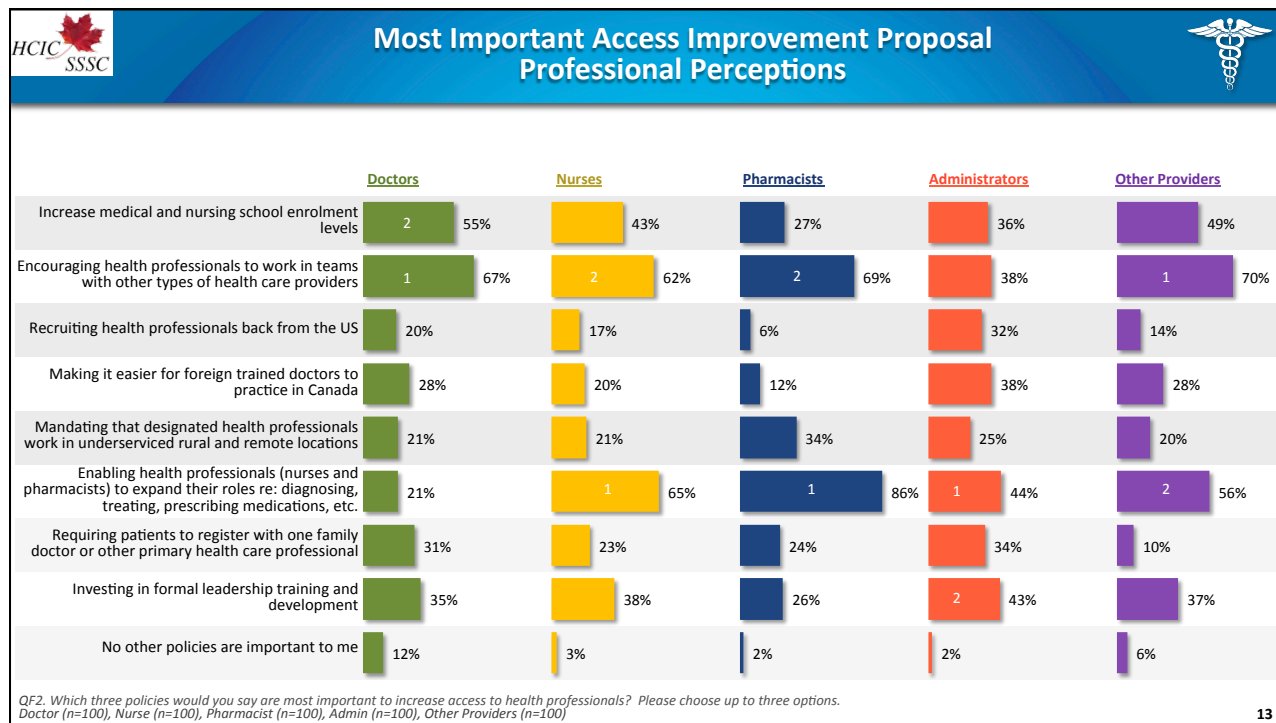


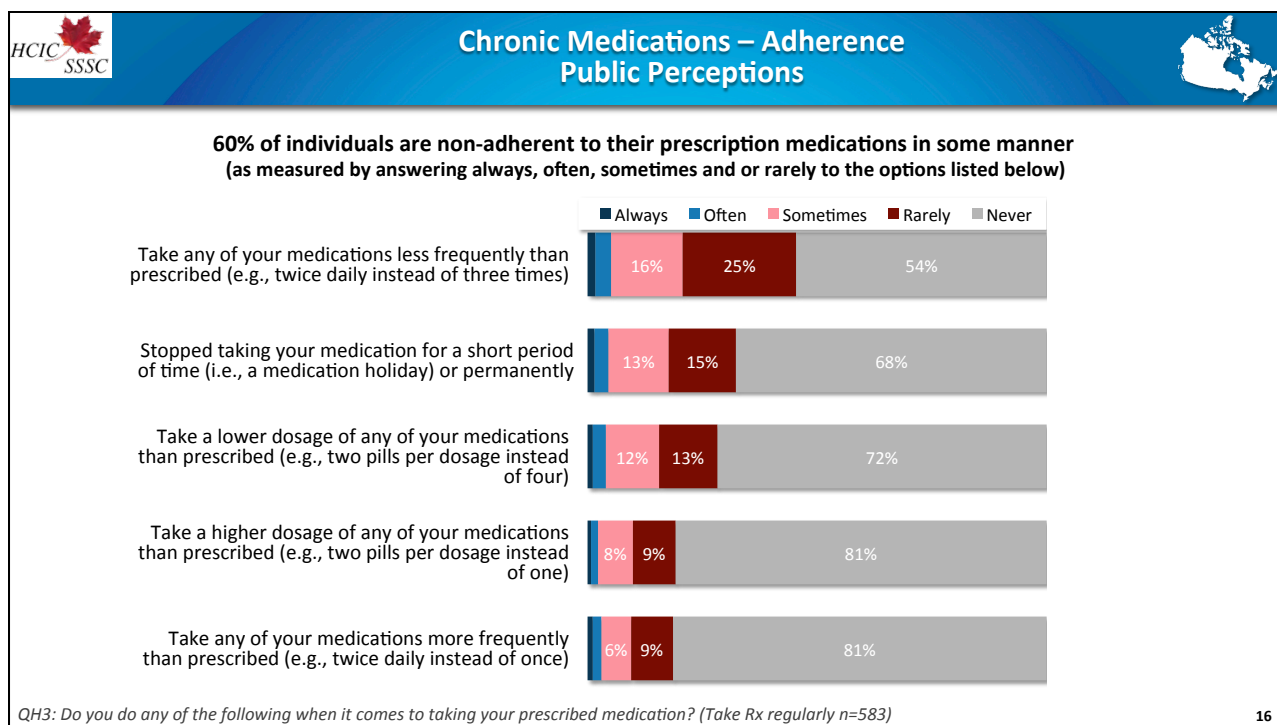
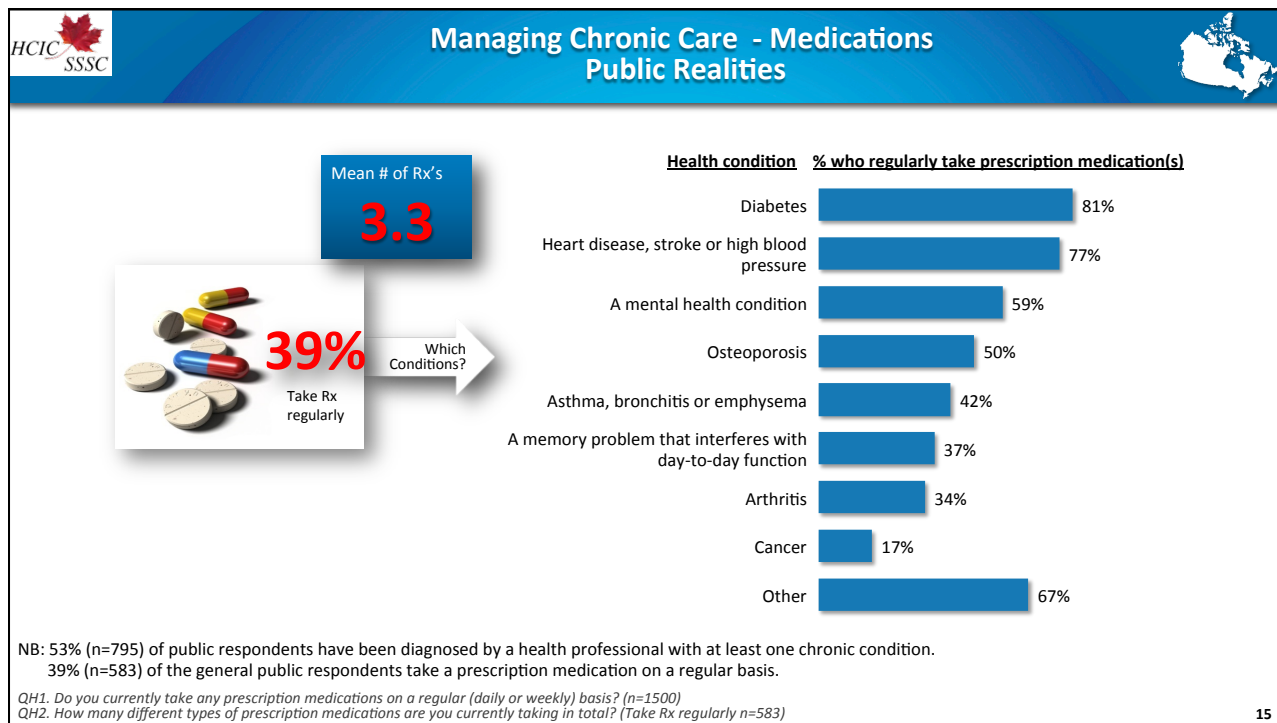
9

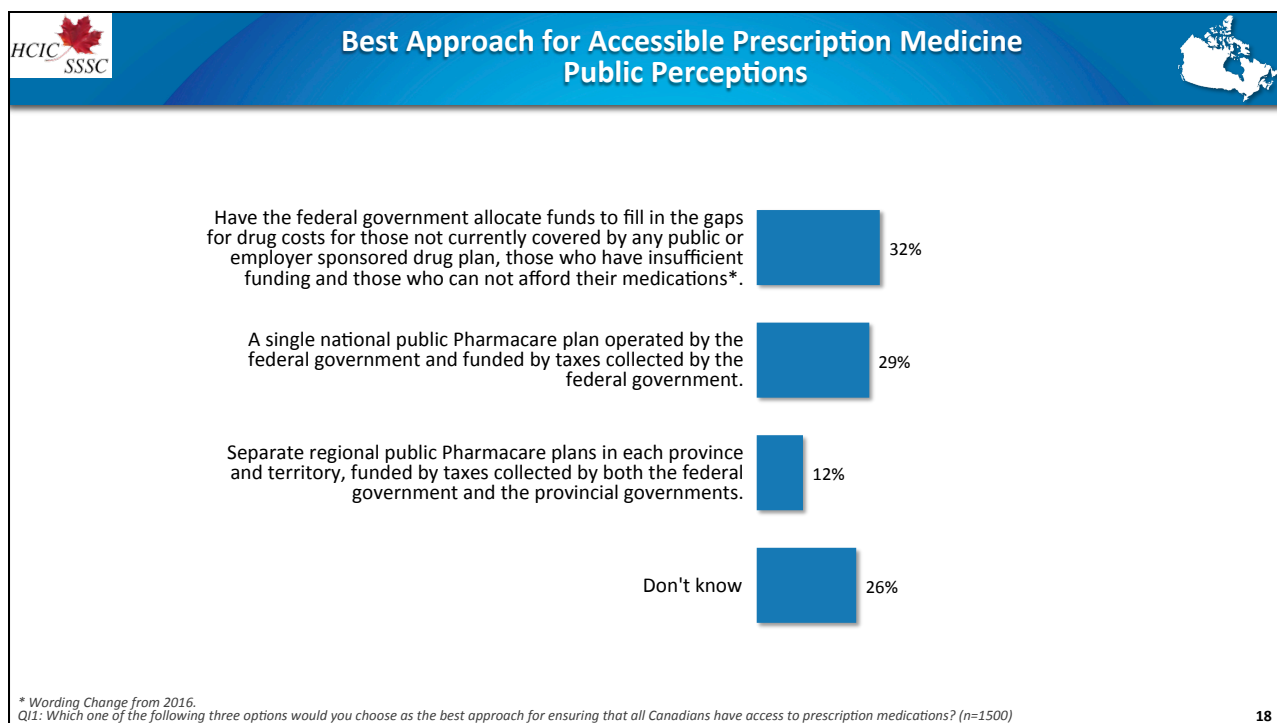
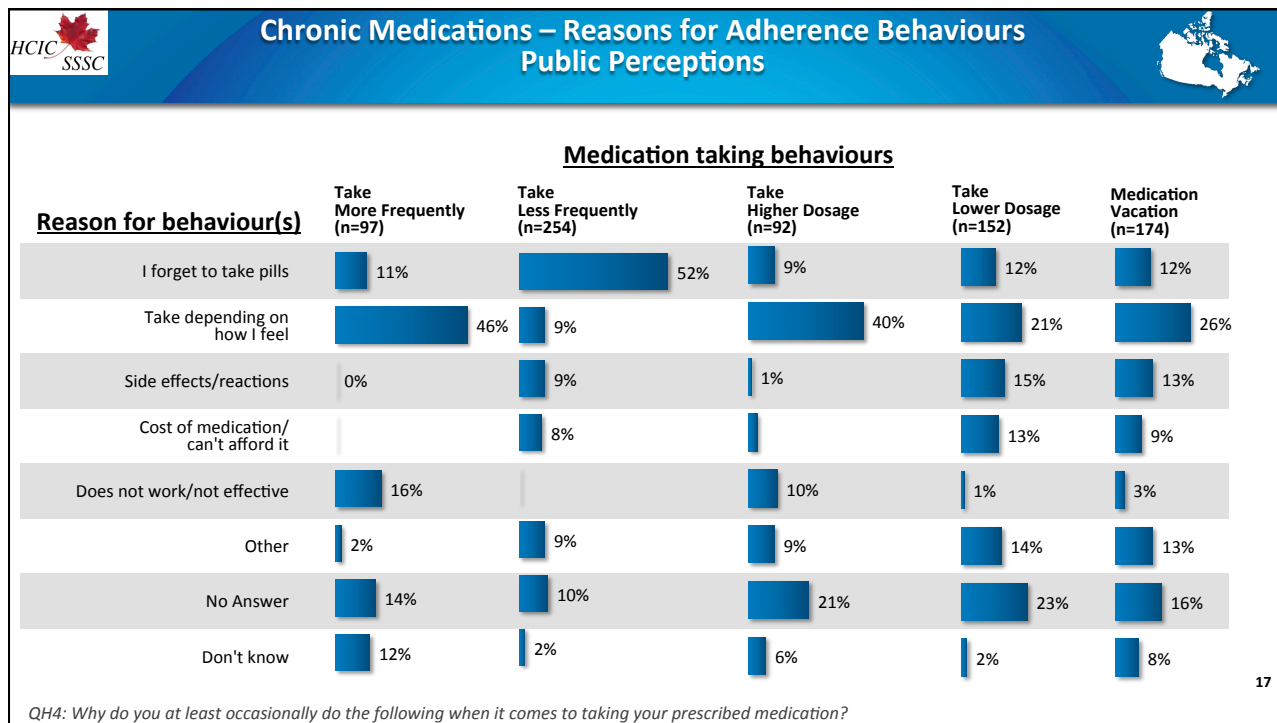


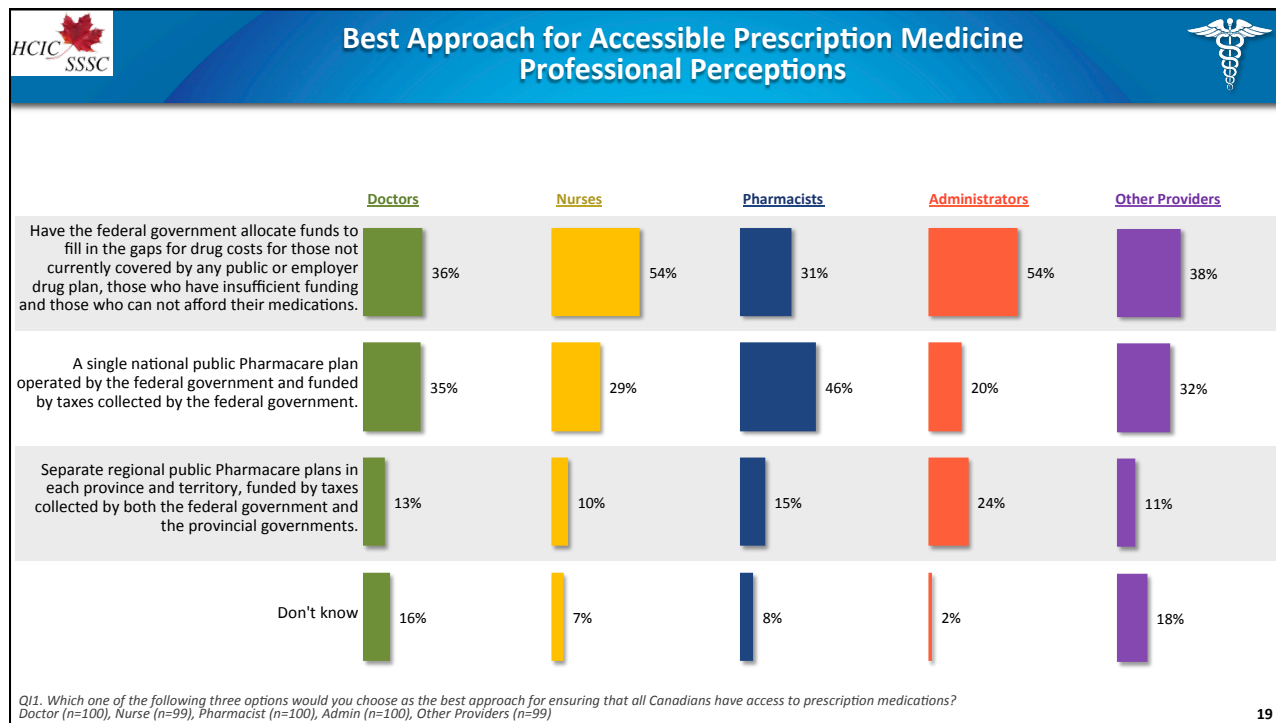
10











19

Health Care in Canada Survey

Thank you for visiting the HCIC website.

To request further data/analysis, use the **HCIC Data Request Form** found here:
<https://www.mcgill.ca/hcic-sssc/hcic-surveys/2018>

If you plan to use any **HCIC results** in any manner, please tell us so we can better understand what you/your organization find most interesting/useful by completing the **Data Use Form** found here:
<https://www.mcgill.ca/hcic-sssc/hcic-surveys/2018>

For general enquiries email: info@hcic-sssc.com

20