

SCAVENGER HUNT

You've just picked up the scavenger hunt sheet and are standing in the main Entrance Hall of the Redpath Museum. On the ceiling hang whale skeletons, on the walls there are bones of underwater animals from long ago ... Let's do a scavenger hunt and explore the collections! Write down your answers and check them on the last page when you're done. Good luck!

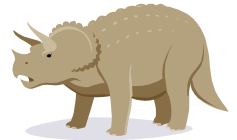


GROUND FLOOR: BACK TO THE SEA

1. Can you find the biggest bone in the Entrance Hall? What is it?



- A) A triceratops horn
- B) The broken skull bone of a whale
- C) The humerus (upper arm bone) of a Steller's Sea Cow



SECOND FLOOR: SHELLS, MINERALS, AND THE DAWSON GALLERY

2. As you climb the stairs to the second floor, you will see a large slice of a HUGE Douglas Fir tree. Each ring represents a year of growth for the ancient tree.



Can you find the growth ring when Jacques Cartier discovered the island of Montréal?

In which year did he discover the island ? _____

3. Now move up the stairs to the **Shells and Minerals** display. You will see a large meteorite that crashed into the Earth from outer space!

Roughly how old is the meteorite? _____ years old

4. Looking through the doors into the Dawson Gallery is the museum's *Gorgosaurus* exhibit. Take a closer look at its legs. This poor *Gorgosaurus* broke one of its legs while it was still alive.

A) Can you figure out which leg it broke? (*Hint*: Check the *Gorgosaurus* information card showing the skeleton) i). Right leg ii.) Left Leg

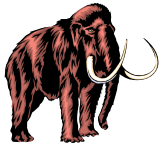
B) How can you tell?



5. How many dinosaurs can you find in the diorama entitled *Dinosaurs of Western Canada*, located behind the *Gorgosaurus* skeleton?

- A) 3 dinosaurs B) 5 dinosaurs C) 7 dinosaurs D) 6 dinosaurs

6. In front of the *Gorgosaurus*, there is the skull of a *Saber-toothed Cat* or *Smilodon*.



A) When did this animal live? _____

B) Can you name 2 other prehistoric animals that lived at this time?

7. In the back of the **Dawson Gallery**, near the windows, are exhibits about the Biodiversity in Québec. The environment in the province changes quite a bit over the course of the year. Think of how different winter and summer are. Look through the exhibit and make a list of some animals you **do not** see in winter.



- A) A frog _____ B) _____ C) _____



Thinker's corner: What do humans do to keep warm in the winter? Think about some things you and your family do to keep warm in the winter. Now think about some things animals do to keep warm. Are they similar or different?

8. Look above the **Québec Mineral Exhibit**; you will find the skull of an animal called an *Irish Elk* or *Megaloceros*. It was actually a deer and has been extinct for 11 000 years! However, many excellent bones have been found in Ireland, which is where its name comes from. What is the biggest part of the animal? _____

9. In the display case under the *Irish Elk* there is an amazing collection of minerals from Québec. List your three favourite minerals and where they came from.

Name of Mineral	Colour(s)	Where it came from

10. Which mineral did you find the strangest or most interesting in the exhibit?

Make a sketch of it here to remember it after you leave

THIRD FLOOR: WORLD CULTURES

11. As you head up the stairs, take a look to your left at the 'Hominid Evolution' exhibit. How many different skulls of early humans can you find in the display? _____



12. Now look at the *Ptolemaic Mummy* display. Can you name 2 animals that the Egyptians mummified?

A) _____

B) _____



13. Look at the mummy in front of the big x-ray. How old was the mummy when it died? _____ years old. Is it a male or a female? _____

14. Find the reconstructed head of this mummy and draw it:



15. Walk around the gallery to find the display with a small, dark-coloured head that looks like a human head.

What is it? _____ Where is it from? _____

16. Now find the display containing many tiny shoes. The practice of foot binding was common in which country? _____



Thinker's corner: Foot binding caused feet to grow into an unusual shape which was thought to be attractive in this culture at that time. Foot binding must have hurt quite a bit or at the very least been uncomfortable. Can you think of anything you have ever done or had to wear that looked nice but was uncomfortable ?

17. Find the two exhibits that have money from different cultures (they are not next to each other!).

Can you name the two cultures or the two countries that the money comes from?

A) _____ B). _____

18. In one of the exhibits of money, there are also other items that people used as money for trading.

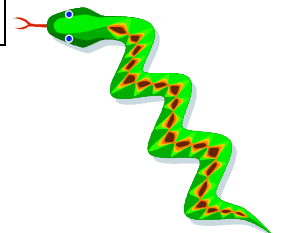
Can you name two items that were used for trade?

A) _____ B). _____

Thinker's Corner: Can you name something that you have traded?



Bonus: Can you find the Anaconda skeleton in the museum? It's hidden!



CONGRATULATIONS: YOU'RE DONE!

Answers

- 1) Broken skull bone of a whale
- 2) 1535
- 3) About 20 000 years old
- 4) The right leg. You can tell because there is a lump where the bone tissue healed.
- 5) Five dinosaurs
- 6) A) In the Ice age, roughly 10 000 years ago. B) Your choice of other animals (Mastodon, Castoroides, Diprotodon or more!)
- 7) Your choice: frogs (hibernate), most birds (migrate south), etc.
- 8) The antlers. They can span 3.7m and weigh 45 kg!
- 9) Your choice
- 10) Your choice
- 11) Ten (one is a photo)
- 12) Ibis, cats, crocodiles, falcons
- 13) He was a male, 30-35 years old.
- 14) Your own drawing.
- 15) It is a shrunken monkey head. It is from Peru.
- 16) It was a practice carried out in China.
- 17) Ancient Greece and Africa
- 18) Your choice: shells, knives, spears, cloth, Katanga Cross, Manilla, double gong, cakes of pigment

We hope you enjoyed your visit to the Redpath Museum! See you again soon!

Redpath Museum
859 Sherbrooke St. W.
Montréal, Qc
H3A 2K6
(514)398-4086

www.mcgill.ca/redpath



Opening hours:

Monday to Friday:
9:00am to 5:00pm

Sunday:
12:00pm to 5:00pm