

MCGILL UNIVERSITY

Annual Report

School of Physical and Occupational Therapy



EXCELLENCE THROUGH GROWTH

Submitted by Annette Majnemer, OT, PhD, FCAHS

June 1, 2013

Period covering January 1, 2012 – December 31, 2012

Launching a New Strategic Plan for the School of Physical & Occupational Therapy (SPOT)

The School's faculty (47 faculty, 38.4 FTE – Fall, 2012) and support staff (n=14) worked collaboratively in 2012 to identify key strategic goals for the next four years (2012–2016). These goals are to:

1. Optimize the quality and efficiency of educational programs through mentorship, program innovation, efficient management and improved teaching and learning spaces.
2. Promote research successes through mentorship, collaborations, infrastructure support and enhanced visibility and recognition of strengths and emerging areas of scientific discovery.
3. Augment sense of community within the School and strengthen relationships with alumni and community partners.
4. Strengthen our faculty team by clarifying expectations with respect to roles and responsibilities (i.e. teaching, research and scholarly activity) by academic rank, so as to ensure workload equity, transparency and recognition of contributions.
5. Expand our influence in the national and international arena in education and research and enhance our impact and presence within the Faculty, McGill University and the Quebec society.

***i*SPOT**

innovation in...

SCIENCE discoveries from cell to community

POWER to influence people, practices, policies

OUTREACH with local and international communities

TRAINING professionals, scientists and educators

Strategic plan 2012–2016

Our faculty continues to be highly productive, successful researchers in spite of teaching loads well above the normative standard of the Faculty of Medicine. Our faculty published 88 peer-reviewed papers, many written collaboratively with other faculty members, often with graduate trainees. In addition, there are 23 invited reviews or book chapters. Faculty are principal or co-principal investigators on approximately 100 grants, with many funded by CIHR, as well as Grand Challenges Canada, NSERC, FRQS, among others. Appendices of publications and grants are included.

Approximately half of our tenure stream faculty are involved in the Rehabilitation Living Lab project, funded by FRQS, and co-led by one of our faculty Dr. Eva Kehayia. The vision of this project is to create an inclusive environment within a metropolitan shopping mall, aiming to optimize social participation and inclusion for all individuals. The research team of more than 50 researchers and their graduate students, along with academic, clinical, commercial/industrial, and community partners, has been working steadily in the Living Lab of Place Alexis Nihon (the MALL) and in clinical laboratories in Montreal and internationally. Three objectives are pursued:

1. Identify the environmental, physical and social obstacles and facilitators to participation (shopping, meeting with friends, etc.),
2. Develop technology and interventions to optimize physical and cognitive function, social participation and inclusion of persons with disabilities, and,
3. Implement and evaluate the impact of technology and interventions in-vivo (i.e., in the Living Lab) on physical and cognitive function, social participation and inclusion of persons with disabilities.

Overall, 31 projects have been funded since the inception of the MALL program while others are currently being planned. Over 10 students have already been funded and 4 new faculty members have received start-up funds to conduct research within the MALL. One of the key strengths of the MALL project lies in its strong interdisciplinary and inter-sectorial nature, bringing together different research groups across disciplines and stakeholder groups across sectors to conduct research in the MALL. An important evolution over the past year is the creation of a Community of Practice with the broad theme of 'learning together to improve rehabilitation, participation and inclusion for people living with disabilities'. While studies are on-going and will continue over the next two years, we have already begun developing new collaborations for the creation of other living lab projects involving partners such as the Museum of Civilization in Quebec.

Another exciting project involves the national investigator team of Auto21Network Centres of Excellence and CanDRIVE (CIHR team on older person driving) with Dr. Isabelle Gélinas, Dr. Barbara Mazer and Dr. Nicol Korner-Bitensky as key leadership members. This network involves research and development activities to build a stronger automotive sector in Canada. Drs. Gélinas, Mazer and Korner-Bitensky are particularly implicated in projects to enhance driving safety and evaluating on-road performance of older adults. This body of research links well with our innovative online bilingual certificate in driving ability and rehabilitation. Using GPS data to quantify changes in on-road behavior, safety of older drivers will be objectively evaluated. An award-winning video of this project may be viewed at

<http://www.youtube.com/watch?v=lvnVIARyX94&feature=youtu.be&hd=1>.

The School has continued to expand in terms of student numbers, reaching >700 enrolled in the Fall of 2012. Several new initiatives were pursued in 2012 related to teaching and learning:

- A *teaching grid* (providing units to all types of teaching) was developed that more accurately reflects the quantity of teaching activities (lectures, practical labs, workshops, course coordination, supervision, etc.) by our professors. This is enabling the program Directors to better evaluate performance and establish teaching expectations by rank and % FTE (for CAS).
- We invested substantially (\$>250,000) in renewal and *upgrades of our teaching equipment and learning environments*. This included creation of an adapted apartment (adapted kitchen, bathroom, bedroom equipment, ergonomic home office equipment and environmental control equipment), thanks to a generous donation from the Lambert Family.
- A *new admissions process for qualifying year students* into the OT and PT masters' programs was instituted. This included the use of multiple mini interviews. Feedback was very positive from faculty and applicants alike. Within this process, a study of the reliability, predictive validity and stakeholder acceptability was performed (Dr. Thomas and faculty), in collaboration with the Centre of Medical Education. We are working with other units (health professions) in the Faculty of Medicine to centralize the admissions processes as a cost-effective measure.
- Our *curricula in the professional programs are continually improved upon*. For example, the Curriculum Committee of the OT program has completed a curricular mapping process for crosscutting themes of evidence-based practice and health promotion; there is a new business management course for PT students in collaboration with Desautels Faculty of Management; a new anatomy workshop has been created in collaboration with the anatomy department for our qualifying year students.
- We are now providing formal *teaching mentorship to new Contract Academic Staff*.
- With respect to our graduate programs, we are providing new workshops and learning activities (e.g. thesis workshop, surviving comprehensive exams, systematic reviews) tailored to the knowledge needs of our graduate students.
- A *new bilingual online graduate certificate in Chronic Pain Management* was launched in September, 2012, with 14 students registered across multiple health disciplines.
- *Renovations are underway in Davis House* to repair the drainage system that has severely damaged the basement. The interior work is almost complete, which will create bright functional spaces for teaching small groups, one new faculty office as well as two shared research spaces for focus groups and individual interviews and phone surveys. Renovations are planned (funding approved) for practical lab teaching spaces in Hosmer House and Coach House next year.
- Dr. Aliki Thomas was among few *awardees* to the Faculty of Medicine Honour List for Educational Excellence. Professor Susanne Mak was nominated for the Principal's Prize for Excellence in Teaching by the School and put forward by the Faculty of Medicine, but was not awarded.

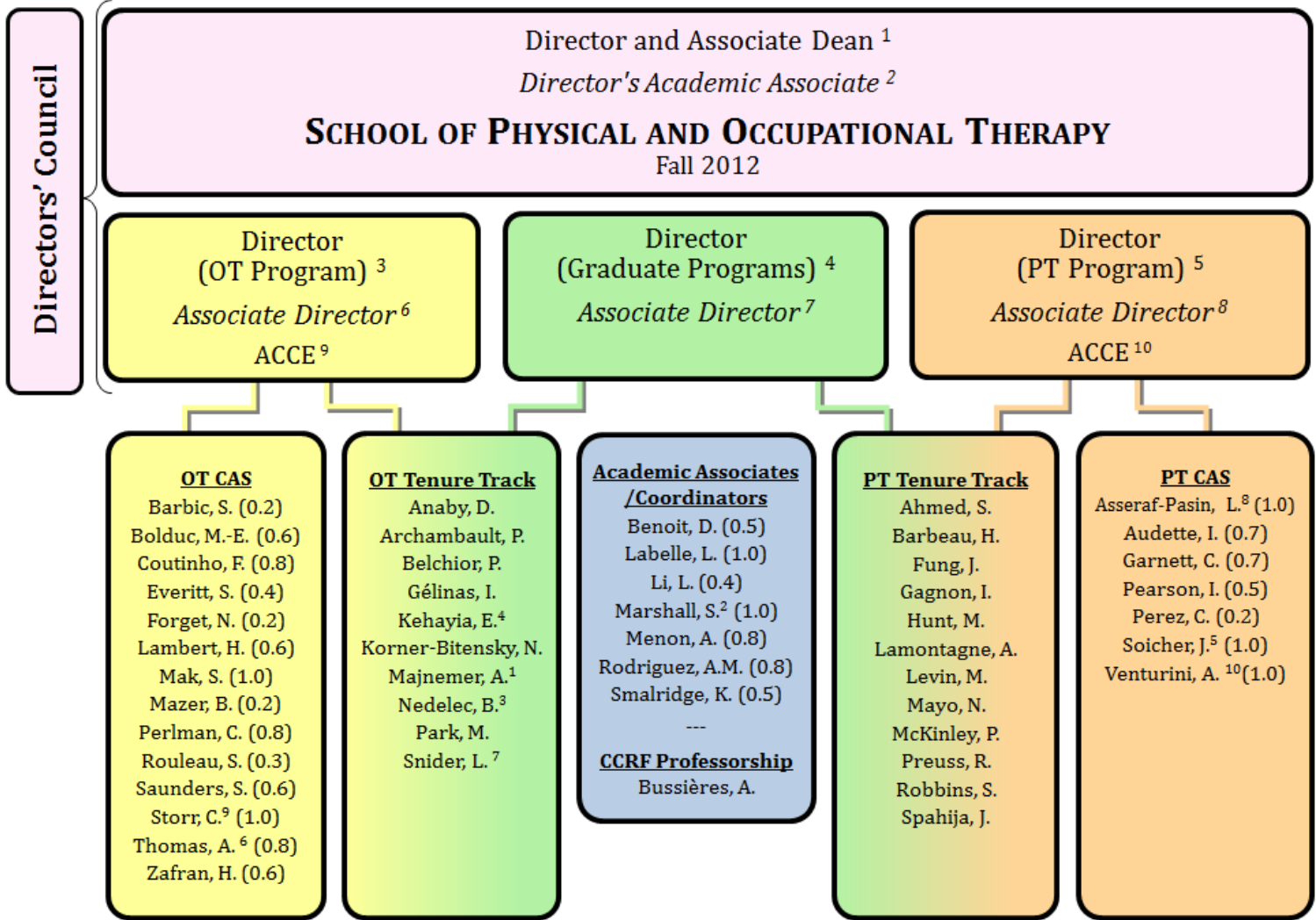
The School has had *important impacts provincially (Quebec society) and abroad (globally)*. The first cohort of PT students (N=29) were admitted into the Université de Québec à Chicoutimi – McGill extension program in *Chicoutimi*. This will enable the School to build capacity in northern Quebec, where there is a serious shortage of physical therapists. OT students engaged in a field placement in the *Cree Nation of Mistissini* in northern Quebec, and developed a video highlighting the importance of cultural sensitivity in Rehabilitation which can be viewed at the following link:

<http://www.youtube.com/watch?v=W1doAjRJPqk&feature=plcp%3Chttp://www.facebook.com/l/FAQFv-DjtAQHjuWcdPYaOYJ65adrYQi6kSvpn72aBTL25Ag/www.youtube.com/watch?v=W1doAjRJPqk&feature=plcp>

International placements are increasingly popular, particularly in the OT program. In addition to sending 6 OT students to rural Quebec regions and 15–20 students across Canada, approximately 15–20 OT students travelled abroad for clinical placements to Africa (Tanzania, Namibia), Asia (India, Thailand, Hong Kong) Central/South America (Colombia, Guatemala), the Caribbean (Barbados, Bahamas), USA, New Zealand and Europe (England, France, Greece).

Over recent years, the number of *international students applying to our graduate programs* has increased substantially. Currently, only 40% (25) graduate students are from Quebec. A small portion is out-of-province Canadians (4), and the remainder (54%) are from abroad. This includes 16 from India, 13 from the Middle East (Iran, Jordan, Saudi Arabia, Lebanon, Israel), 3 from Brazil, 1 from Taiwan and 1 from Nigeria.

Expanding rehabilitation services for individuals with disabilities in Haiti is a pressing need. A *new SPOT initiative to train rehabilitation technicians in Haiti*, entitled “Supporting the training of rehabilitation providers in Haiti” is led by Dr. Matthew Hunt and funded by the McBurney Professional Training Program. Team members include Marie-Ève Bolduc, MSc, OT; Franzina Coutinho, PhD, OT; Nancy Descoteaux, PT; Annette Majnemer, PhD, OT; Alike Thomas, PhD, OT; and Adriana Venturini, MSc, PT. This project is being conducted in collaboration with an international non-governmental organization, Handicapped International, and aims to support the continuing education of rehabilitation providers in Haiti. These collaborations represent an important opportunity to enhance the development of the rehabilitation sector in Haiti, and support the newly formed Haitian Physiotherapy Association.



ACCE: Academic Coordinator Clinical Education
CAS: Contract Academic Staff

STUDENT ENROLMENT

OT Programs

Academic Year	Undergraduate Program			Degree Conferred	Master's Program			Degree Conferred
	U1	U2	U3		QY	M1	M2	
2007-2008	48	--	--	BSc. (Rehabilitation); Major in Occupational Therapy	--	--	--	MSc. Applied (Occupational Therapy)
2008-2009	54	32	--		29	--	--	
2009-2010	40	49	29		31	29	--	
2010-2011	39	43	48		23	51	28	
2011-2012	41	39	38		36	67	48	
2012-2013	41	37	35		37	67	65	

PT Programs

Academic Year	Undergraduate Program			Degree Conferred	Master's Program			Degree Conferred
	Year 1	Year 2	Year 3		QY	M1	M2	
2007-2008	67	--	--	BSc (Rehabilitation); Major in Physical Therapy	--	--	--	MSc Applied (Physical Therapy)
2008-2009	65	58	--		28	--	--	
2009-2010	70	60	54		23	27	--	
2010-2011	65	64	53		19	69	27	
2011-2012	60	63	59		16	58	68	
2012-2013	57	51	56		16	67	54	

Graduate Programs

Academic Year	Graduate Program				Degree Conferred
	M.Sc. (Thesis)	M.Sc. (Non-thesis)	Ph.D.	Graduate Certificates Driving & Pain	
2009-2010	17	12	33	25	21
2010-2011	22	6	36	32	22
2011-2012	21	8	29	19	5
2012-2013	24	4	36	29	12

INVOLVEMENT IN THE COMMUNITY

The School's most important community partners are our clinicians and clinical institutions, our alumni and our donors. Several efforts have been made to enhance relationships with these key community stakeholders.

The School has made *efforts to strengthen relationships with our primary clinical partners*. We hosted working lunch meetings with leadership (Director General or Manager, Heads of OT/PT clinical departments, research leadership) of the MAB Mackay, the Constance Lethbridge Rehabilitation Centre and the MUHC adult services. Together with our Directors and Academic Coordinators of Clinical Education as well as Dr. Benaroya (Associate Vice-Principal, Health Affairs), we met to discuss mutual partnerships in education (teaching, clinical placements), research (collaborations), and other academic activities (knowledge translation). This venue provided us with an opportunity to thank our partners for their collaborations thus far and to consolidate or enhance these partnerships in the future. These meetings were well received and reinforced the importance of our collaborations in meeting our academic mission.

The Edith Strauss Rehabilitation Research Project, generously funded by the Richard & Edith Strauss Canada Foundation (\$200,000/year x 5 years), is enabling our School to carry out a number of important *knowledge translation (KT) and exchange activities with our clinical partners*. We have this unique opportunity to mobilize new scientific discoveries into practice, and more importantly to respond to the knowledge needs of frontline clinicians. Through this Strauss KT project, we are taking advantage of a 'pull' approach, where knowledge users (clinicians, grad students) seek information from our School. By funding KT projects with clinicians or graduate students as principal investigator (together with a tenure stream faculty member as co-PI), current gaps between research knowledge and practice or policy are being addressed. These projects, annual KT workshops and our Interactive Day are ways in which we can respond to knowledge needs in the frontline of health care. We are privileged at the School to be able to help bridge these gaps, and ultimately enhance the health and well-being of patients and promote best practices in rehabilitation.

In 2012, we created a SPOT Facebook page, and are using this medium to reach out to *the School's alumni* and update them regularly (several times per week) on events, accomplishments and successes. We hosted many special events at the School, to include our:

- Nametag Ceremony (May 2, 2012) for U3/QY classes of OT and PT, with inspiring speeches from *expert clinicians* Clara Carpintero (OT clinician) and Patrick Handfield (PT clinician);
- Strawberries and Champagne Convocation Reception (June 5, 2012) for graduates of our Professional Masters' programs in OT and PT and our graduate programs in Rehabilitation Science and attended by *many of our donors* of awards;
- Homecoming Reception (October 12, 2012) for *past alumni* of the years ending in 2 or 7;
- Edith Aston-McCrimmon Lectureship (November 29, 2012) with *keynote speaker Her Excellency Sharon Johnston PT, PhD*, an alumna of our doctoral program in Rehabilitation Science;
- Celebration of the Inauguration of our Benefactors' Lounge (November 29, 2012), together with Her Excellency Dr. Johnston, the Dean, and *most of our donors*.

Our faculty is heavily involved in numerous committees within the Faculty of Medicine and the University. *Locally*, our faculty contributes to many organizations and institutions. For example, Dr. Patricia McKinley is a member of the Board of Directors of the Nathan and Maxwell Cummings Centre and on their social services and integration and adaptation committees. Professor Caroline Storr is a member of the Board of Directors of the Constance Lethbridge Rehabilitation Centre, whereas Dr. Joyce Fung is Director of Research at the Jewish Rehabilitation Hospital. Dr. Philippe Archambault chairs the Technology Strategic Group of Réseau provincial de recherche en adaptation-réadaptation (REPAR). Dr. Sara Ahmed is on the Steering Committee Center of Expertise in Chronic Pain; Dr. Patricia Belchior is a member of the Alzheimer's Inc. Education Committee. Dr. Eva Kehayia is co-Scientific Director of Centre de recherche interdisciplinaire en réadaptation du Montréal métropolitain (CRIR).

Our faculty members are also involved in a number of committees *nationally*. For example:

- Dr. Isabelle Gélinas: OSOT expert panel on Medically at Risk Drivers;
- Dr. Matthew Hunt: Disability, Inclusion and Rehabilitation Interest Group of the Canadian Coalition for Global Health Research
- Dr. Matthew Hunt: Co-chair of Humanitarian Health Ethics Network/international
- Dr. Nicol Korner-Bitensky: Expert focus group for national strategic plan, Heart and Stroke Foundation
- Dr. Bernadette Nedelec: Secretary/Treasurer, Association of Canadian Occupational Therapy University Programs (ACOTUP)
- Dr. Annette Majnemer: Selection Committee, Canadian Child Health Clinician Scientist Program; Nominating Committee of Canadian Academy of Health Sciences
- Dr. Jadranka Spahija: Congress Education Committee, Canadian Physiotherapy Association Congress

Within the *international arena*, our faculty members have been involved in the *organization of several international meetings*. Dr. Laurie Snider was on the scientific program committee of the American Academy of Cerebral Palsy & Developmental Medicine; Dr. Eva Kehayia co-chaired the 8th International Conference on the Mental Lexicon; Dr. Sara Ahmed was co-chair of International Society for Quality of Life Research annual conference scientific program committee; Dr. Joyce Fung was on the steering committee and scientific committee, International Society of Virtual Rehabilitation and the scientific committee of the International Conference on Rehabilitation Robotics; Dr. Anouk Lamontagne and Dr. Mindy Levin were members of the program committee, International Conferences series on Disability, Virtual Reality and Associated Technologies; Dr. Mindy Levin was on the program committee for the Upper Extremity Post Stroke Think Tank, and the International Conference on Intelligent Robots and Systems.

Other examples of involvement within the *international community* have included:

- Dr. Nicol Korner-Bitensky: Advisory Committee for knowledge translation PTNow initiative for the American Physical Therapy Association. She is also Honorary member, Stroke Society of Australasia
- Dr. Bernadette Nedelec: Chair of the American Burn Association's Rehabilitation Committee

- Dr. Annette Majnemer: Executive member (secretary) and Board of Directors, American Academy of Cerebral Palsy & Developmental Medicine; and external evaluator of all occupational therapy university programs in Israel for the Israeli Council for Higher Education Committee, Quality Assessment Division
- Dr. Mindy Levin: Chair of awards committee, International Society for Motor Control, and Vice President, International Society of Virtual Rehabilitation
- Dr. Nancy Mayo: Education committee, International Society for Quality of Life Research

Several of our faculty members were involved in international teaching workshops. For example, Dr. Mindy Levin gave a motor control short course (7 hrs x3) at the Oxford College of PT, India, at Manipal College of Applied Health Sciences, India, and in Jerusalem, Israel. Dr. Nancy Mayo gave a workshop on the Rasch measurement theory in the UK.

The School is in an *active recruitment* mode for several tenure track positions in OT and in PT. In August 2012, Shawn Robbins, PT, PhD, joined our faculty as Assistant Professor, tenure track. His research focuses on the neuromuscular and biomechanical factors underlying mobility, particularly in individuals with knee osteoarthritis. In addition, André Bussi eres, DC, FCCS (C), MSc, PhD, has been recruited to fill the position of Canadian Chiropractic Research Foundation (CCRF) Professorship in Rehabilitation Epidemiology. His research interest focuses on evidence-based guideline developments and uptake to improve clinical practice and patient outcome, knowledge synthesis, implementation research and professional behaviour change. New recruits were assigned faculty mentors, and these new faculty members met regularly with the Director, and as part of their annual performance dialogue.

Several *faculty members were promoted* during the 2012 calendar year. Philippe Archambault OT, PhD, and Jadranka Spahija PT, PhD were recommended by the Board of Governors for promotion to Associate Professor with tenure. Cynthia Perlman OT, MA, was promoted to Assistant Professor (Professional). Reappointment was recommended and approved for Isabelle Gagnon PT, PhD, Patricia Belchior OT, PhD, and Melissa Park OT, PhD. In order to provide objective feedback with respect to annual performance in teaching, research and scholarly contributions, specific criteria were developed that corresponds to the scoring (1, lowest, to 6, highest, for each of the 9 domains) for the merit ranking sheets used by the Faculty of Medicine. These criteria were distributed to all faculty to enhance transparency and clarify expectations.

There were no *retirements* during the 2012 calendar year. Laurie Snider OT, PhD, and Joyce Fung PT, PhD, were on *sabbatical leave* during the 2011–2012 academic year, and Isabelle G elinas OT, PhD, began her sabbatical leave in September 2012.

HONOURS, AWARDS, AND PRIZES

The most prestigious McGill-specific, local, national, or international awards conferred upon staff members as well as students.

AHMED, Sara	FRQS Chercheur boursier Junior II	\$322,341	2012-2016
ARCHAMBAULT, Philippe	McGill University - Hugh & Hellen McPherson Memorial Award	\$36,000	2011-2013
BUSSIÈRES, André	Canadian Chiropractic Research Foundation (CCRF) Professorship in Rehabilitation Epidemiology	\$100,000	2012-2017
	Médaille de distinction chiropratique 2012, Ordre des Chiropraticiens du Québec		2012
EVERITT, Sandra	“Mérite du C.I.Q.” Award of Merit from Conseil interprofessionnel du Québec		2012
FUNG, Joyce	McGill University - William Dawson Scholar	\$10,000/yr	2008-2013
GAGNON, Isabelle	FRQS Chercheur boursier Junior II	\$53,082/yr	2012-2016
LAMONTAGNE, Anouk	FRQS Chercheur boursier Junior II	\$83,490/yr	2012-2014
LEVIN, Mindy	Canada Research Chair Tier I	\$200,000/yr	2012-2019
	American Society of Neurorehabilitation Education and Research Foundation Award for Outstanding Neurorehabilitation Clinician Scientist		2012
MAJNEMER, Annette	Member of American Occupational Therapy Foundation (AOTF) Academy of Research for outstanding contributions through research to the advancement of knowledge in occupational therapy; highest honor conferred by AOTF.		2012
MAYO, Nancy	James McGill Professor		2011-2016
	Enid Graham Memorial Lecturer; highest honor conferred by Canadian Physiotherapy Association		2012
THOMAS, Aliko	Best doctoral dissertation in education in the province of Quebec; Awarded by the Association des doyens et directeurs pour l'enseignement et la recherche en éducation du Québec (ADEREQ)		2012
	Faculty Honor List for Educational Excellence awarded in recognition of contributions to teaching in the Faculty of Medicine, McGill University		2012

GRANTS

FACULTY MEMBER	ROLE	TITLE OF PROJECT	FUNDING AGENCY	FUNDING TOTAL	FUNDING PERIOD
AHMED, S.	PI	Mise en œuvre et évaluation d'un réseau intégré de prévention et de gestion de la douleur chronique	Fonds Pfizer FRQS-MSSSA sur les maladies chroniques	\$621,250	2012-2014
	PI	Mentorship in chronic pain: Implementation and evaluation of a novel clinical knowledge transfer and exchange program	Richard & Edith Strauss Canada Foundation	\$11,800	2012-2013
	PI	Maximizing the effects of self-management interventions on chronic disease outcomes: The development of a Chronic Obstructive Pulmonary Disease (COPD) web-based patient portal	CIHR	\$349,000	2011-2014
	PI	Program evaluation of an interdisciplinary chronic pain program	Edith Strauss Rehabilitation Research Projects	\$14,732	2011-2012
	PI	Providing patients with chronic pain with the necessary knowledge and self-management support: Development of a patient health portal for chronic pain	Edith Strauss Rehabilitation Research Projects	\$14,999	2011-2012
	PI	Empowering patient decision-making and health management: Evaluating individual preferences and willingness to adopt health information technologies	CIHR	\$49,000	2011-2012
	Co-PI	A Rehabilitation Living Lab: Creating enabling physical and social environments to optimize social inclusion and social participation of people with disabilities	FRQS	\$1,400,000	2011-2015
	CO-PI	Synergizing expectation and execution for stroke communities of practice	CIHR	\$193,500	2009-2012
	Co-I	Emerging Team: The scleroderma patient-centered intervention network	CIHR	\$1,500,000	2012-2017
	Co-I	Vers un continuum de services pour l'AVC, évaluation des structures, processus et indicateurs de rendement des services de réadaptation	CIHR	\$370,775	2011-2015
	Co-I	Suivi systématique des personnes âgées utilisant un fauteuil roulant motorisé à l'aide d'un système de réponse vocale interactif (SRVI).	Réseau Québécois de recherche sur le vieillessement	\$23,416	2011-2012
	Co-I	EMPOWER study: Electronic medications and patient ownership of end results	CIHR	\$288,288	2009-2012
	Co-I	Improving patient safety and chronic disease management with a new generation of health information technologies	CIHR	\$1,388,735	2008-2014
ANABY, D.	PI	Opening doors to participation of youth with physical disabilities in community activities: A pilot study	REPAR	\$19,989	2012-2013
	PI	Focus on participation of children and youth with disabilities: Enhancing therapy through a guided knowledge translation process	Edith Strauss Rehabilitation Research Projects	\$14,487	2012-2013
	Co-PI	Management of children with Cerebral Palsy - Has rehabilitation practice changed in the last 7 years?	Edith Strauss Rehabilitation Research Projects	\$12,000	2012-2013
	Co-I	Implementation of an intergenerational inclusive wellness park to facilitate reintegration into leisure activities for clients of a rehabilitation hospital	Edith Strauss Rehabilitation Research Projects	\$12,002	2012-2013
	Co-I	Poverty and ethno-cultural diversity as the context for parenting and service access for children with neurodevelopmental disorders in Montreal, QC	McGill Collaboration Research & Development Fund	\$15,000	2012-2013
ARCHAMBAULT, P.	PI	The McGill Immersive Wheelchair (miWe) Simulator for the clinical assessment and at-home training of powered wheelchair driving skills	CIHR	\$300,000	2012-2015
	PI	Virtual reality gaming system for arm rehabilitation	Grand Challenges Canada	\$113,000	2012-2014
	PI	Validation of a novel environment for quantification of arm motor recovery	NSERC	\$25,000	2012
	PI	Design and testing of a powered wheelchair simulator	NSERC	\$75,000	2008-2013
	PI	Un centre communautaire virtuel pour l'entraînement chez des enfants de la conduite en fauteuil roulant motorisé : preuve de concept et évaluation.	REPAR	\$20,000	2010-2012
	PI	Innovative rehabilitation techniques to promote recovery and improve upper extremity function in persons with motor deficits	CFI	\$411,400	2007-2012

FACULTY MEMBER	ROLE	TITLE OF PROJECT	FUNDING AGENCY	FUNDING TOTAL	FUNDING PERIOD
... (continued) ARCHAMBAULT, P.	Co-I	Sensori-Motor Rehabilitation: A multi-centric interdisciplinary translational research group	CIHR	\$1,500,000	2011-2016
	Co-I	Ingénierie des technologies en réadaptation (INTER)	FQRNT	\$1,050,000	2011-2016
	Co-I	A Rehabilitation Living Lab: Creating enabling physical and social environments to optimize social inclusion and social participation of people with disabilities	FRQS	\$1,400,000	2011-2015
	Co-I	Impact des habiletés en fauteuil roulant manuel sur la participation sociale chez les personnes ayant subi une lésion de la moelle épinière	FRQS	\$75,000	2010-2012
BARBEAU, H.	Co-I	Determine the safety, toxicity, maximum tolerated dose level and preliminary efficiency of spinalin in SCI subjects.	NIH	\$140,000	2011-2013
BELCHIOR, P.	PI	An emerging role of occupational therapists in the management of individuals with mild cognitive impairment: a preliminary study	Richard & Edith Strauss Canada Foundation	\$13,250	2012-2013
BENOIT, D.	Co-I	Dispositifs électromécaniques pour commandes à effort minimal dans les véhicules adaptés pour les personnes ayant des incapacités physiques : état de la situation des besoins, des produits et des pratiques au Québec	FRQSC-SAAQ-FRQS	\$150,000	2012-2015
BOLDUC, M-È.	Co-I	Supporting the training of rehabilitation providers in Haiti	IHSP	\$72,922	2012-2016
COUTINHO, F.	Co-I	Supporting the training of rehabilitation providers in Haiti	IHSP	\$72,922	2012-2016
FUNG, J.	PI	Neurological Sensorimotor Rehabilitation: A multi-centric interdisciplinary translational research group	CIHR	\$2,500,000	2011-2015
	PI	Sensorimotor Integration in the Control of Posture and Locomotion	McGill University William Dawson Scholar	\$75,000	2008-2013
	Co-I	Specificity and sensitivity of the vestibular screening questionnaire in children with motor disabilities	OPPQ	\$7,500	2012-2013
	Co-I	Investigating the effect of haptic input on balance control during walking.	Saskatchewan Health Research	\$109,703	2011-2014
	Co-I	Groupe INTER (Ingénierie de technologies interactives en réadaptation).	FQRNT	\$1,074,000	2011-2014
	Co-I	A Rehabilitation Living Lab: Creating enabling physical and social environments to optimize social inclusion and social participation of persons with physical disabilities	FRQS	\$350,000	2011-2012
	Co-I	Visuomotor control of locomotion	CIHR	\$433,900	2010-2015
	Co-I	Improving post-stroke recovery by combining noninvasive brain stimulation with rehabilitation	Heart & Stroke Foundation Canada	\$68,000	2010-2013
	Co-I	STROKENGINE: an interactive e-learning resource for moving evidence-based stroke rehabilitation into clinical practice – Continuation Project	Canadian Stroke Network	\$254,700	2010-2012
GAGNON, I.	PI	Improving diagnosis and treatment of pediatric and adolescent of mild traumatic brain injury in Canada	CIHR	\$1,400,000	2012-2015
	PI	Exploring the impact of a physiotherapy intervention on the risk of re-injury and recovery in children and adolescents with acute ankle sprains: a randomized controlled trial.	MCH-RI	\$10,000	2010-2012
	PI	Facteurs et interventions contribuant à un retour sécuritaire et satisfaisant aux activités physiques après un traumatisme craniocérébral chez les enfants et les adolescents.	FRQS	\$30,000	2008-2012
	Co-PI	Évaluation de l'impact d'une intervention de réadaptation sur la récupération et le risque de subir une deuxième blessure chez les enfants et adolescents ayant subi une entorse de la cheville : étude clinique randomisée	FRQS	\$230,000	2012-2015
	Co-PI	Relationship between balance and self-efficacy in children after a mild traumatic brain injury	OPPQ-REPAR Partnership	\$15,000	2012-2014
	Co-I	Active Rehabilitation for Slow to Recover Adolescents following Sport-Related Concussion: A Randomized Control Trial	BC Rehab Fund for Research and Innovation	\$30,000	2012-2014
	Co-I	Structural and functional neuroimaging, cognitive testing and postural stability assessment in children with mild traumatic brain injury.	CIHR	\$573,856	2011-2015
	Co-I	Understanding and measuring integrated functioning following traumatic brain injury (TBI).	Ontario Neurotrauma Foundation /REPAR	\$120,000	2011-2014

FACULTY MEMBER	ROLE	TITLE OF PROJECT	FUNDING AGENCY	FUNDING TOTAL	FUNDING PERIOD
GÉLINAS, I.	PI	Evaluating the on-road performance Of older drivers: Innovations to enhance safety	CIHR/NSERC/SSHRC	\$201,000	2012-2014
	Co-PI	CIHR Team on Older Person Driving (CanDRIVE II).	CIHR	\$1,115,747	2008-2013
	Co-I	Retour à la conduite automobile des personnes traumatisées crâniennes après la réadaptation: évaluation des comportements de conduite et de leur dangerosité	FRQS	\$149,974	2012-2014
	Co-I	Préserver l'autonomie fonctionnelle des personnes âgées ayant subi un traumatisme craniocérébral léger (TCCL) : Adaptation, implantation et évaluation de l'intervention d'Accompagnement personnalisé d'intégration communautaire (APIC)	FRQS	\$150,000	2012-2014
	Co-I	Driving-related screening, assessment, and referral practices of Occupational Therapists (OT) treating older individuals experiencing mild cognitive impairment and dementia	Edith Strauss Rehabilitation Research Projects	\$11,750	2012-2013
	Co-I	Évaluation d'une intervention d'accompagnement personnalisé en intégration dans la communauté pour les personnes ayant un traumatisme craniocérébral.	CIHR	\$83,912	2011-2012
	Co-I	Outil de sensibilisation aux capacités requises pour conduire sécuritairement un véhicule automobile : une démarche de prévention des traumatismes chez une population de conducteurs âgés.	CIHR	\$48,250	2011-2012
HUNT, M.	PI	Supporting the training of rehabilitation providers in Haiti	IHSP	\$72,922	2012-2016
	PI	Investigation of the ethics of disaster research in low resource settings	CIHR	\$198,400	2012-2015
	PI	Ethical issues in global health research: analysis of a participatory action research on free access to health services for indigent individuals (worst-off) in Burkina Faso	Teasdale-Corti Equipe de Recherche interdisciplinaire sur la vulnérabilité et l'équité en santé en Afrique	\$25,000	2011-2012
	PI	Ethics analysis of issues related to wait lists, prioritization, and treatment parameters in physical therapy: a knowledge translation project	Richard & Edith Strauss Canada Foundation	\$15,000	2011-2012
	Co-PI	Physiotherapy practice and third party payers: issues in professional ethics	CIHR	\$246,574	2012-2015
	Co-PI	Ethics and humanitarian healthcare practice and policy (EHHPP) during acute crisis response in low or middle-income countries	CIHR	\$241,200	2012-2015
	Co-PI	Resources and e-resources for ethics in humanitarian health care: from knowledge to practice	CIHR	\$95,000	2011-2013
	Co-I	Les pratiques en physiothérapie et les agents payeurs : explorations des pratiques pancanadiennes. New initiatives program.	IRSPUM	\$20,000	2012
	Co-I	Ethics, social determinants of health, and health equity: integrating theory and practice Co-leader of <i>Health Equity and Humanitarian Action</i> theme.	CIHR	\$1,740,300	2011-2016
	Co-I	Recherches et interventions communautaires pour l'équité en santé au Burkina Faso	CIHR	\$1,760,381	2011-2016
	Co-I	Professional ethics and conflicts of role for health care professionals in military/humanitarian contexts	CIHR	\$174,984	2010-2013
KEHAYIA, E.	Co-PI	A Rehabilitation Living Lab: Creating enabling physical and social environments for social inclusion and social participation for individuals with physical disabilities	FRQS	\$1,400,000	2011-2015
	Co-PI	Centre for Interdisciplinary Research in Rehabilitation	FRQS-FQRSC	\$3,248,000	2012-2016
	Co-PI	Subvention d'infrastructure du Centre de recherche interdisciplinaire en réadaptation (CRIR) du Montréal métropolitain	FRQS-CQRS-MSSS	\$3,544,000	2012-2016
	Co-PI	Subvention pour l'implantation et évaluation des communautés de pratique liées au Projet Stratégique Innovant du Laboratoire Vivant	MSSS	\$80,000	2011-2012
	Co-I	Ingénierie des technologies en réadaptation (INTER)	FQRNT	\$1,050,000	2011-2016
	Co-I	Identification et compréhension des facilitateurs et des obstacles à la participation et à l'inclusion sociale dans le contexte des centres commerciaux : vers la création d'environnements facilitateurs.	OPHQ-REPAR	\$35,000	2011-2013
	Co-I	Talking about pain: Healthcare communication in a second language population	SSHRC	\$250,000	2008-2013

FACULTY MEMBER	ROLE	TITLE OF PROJECT	FUNDING AGENCY	FUNDING TOTAL	FUNDING PERIOD
KORNER-BITENSKY, N.	PI	Are occupational therapists nationally fulfilling their role of problem identification/ screening/assessing/referring drivers with potential cognitive impairment?	Richard & Edith Strauss Canada Foundation - Knowledge Translation	\$11,750	2012-2013
	PI	Cr Development of an app (software program application) to promote decision-making regarding best practices in upper extremity stroke rehabilitation	Canadian Stroke Network	\$7,000	2012
	PI	StrokEngine: An interactive e-learning resource for moving evidence-based stroke rehabilitation into clinical practice – continuation project.	Canadian Stroke Network/CIHR	\$254,700	2010-2013
	Co-PI	Management of children with Cerebral Palsy – Has rehabilitation practice changed in the last 7 years?	Richard & Edith Strauss Canada Foundation - Knowledge Translation	\$12,000	2012-2013
	Co-PI	A two-phase knowledge translation initiative: identifying assessment practices of occupational therapists in adult mental health and creating a learning tool.	Richard & Edith Strauss Canada Foundation	\$15,000	2011-2012
	Co-PI	Executive function assessment and intervention post-stroke: A learning tool for clinicians, patients and families.	Richard & Edith Strauss Canada Foundation - Knowledge Translation	\$15,000	2011-2012
	Co-PI	Creation and testing of a measure addressing readiness to adhere to functional hand splint use in people with rheumatoid arthritis	Richard & Edith Strauss Canada Foundation - Knowledge Translation	\$8,950	2011-2012
	Co-I	Improving performance in drivers with mild cognitive impairment: An RCT of Cognitive Training	CIHR	\$562,765	2012-2017
	Co-I	Wheelchair (miWe) Simulator for the clinical assessment and at-home training of powered wheelchair driving skills	CIHR		2012-2015
	Co-I	An emerging role for occupational therapists in the management of individuals with mild cognitive impairment: A preliminary study	Richard & Edith Strauss Canada Foundation – Project Award	\$13,250	2012-2013
	Co-I	Focus on participation for children and youth with disabilities: Enhancing therapy practice through a guided knowledge translation process	Richard & Edith Strauss Canada Foundation – Project Award	\$14,487	2012-2013
	Co-I	Motor recovery and coordination in the upper limb post-stroke	CIHR	\$261,777	2010-2013
	Co-I	CanDRIVE II-Research on older drivers	CIHR	\$5,578,735	2008-2013
	LAMONTAGNE, A.	PI	Visuomotor control of locomotion	CIHR	\$433,900
Co-I		A Rehabilitation Living Lab: Creating enabling physical and social environments to optimize social inclusion and social participation of persons with physical disabilities.	FRQS	\$1,050,000	2011-2014
Co-PI		Specificity and Sensitivity of the Vestibular Screening Questionnaire in Children with Motor Disabilities	OPPQ	\$7,500	2012-2013
LEVIN, M.F.	PI	Enhancing arm motor recovery through rehabilitation after brain injury: Fundamental and clinically applied research across the lifespan	Canada Research Chairs (CRC) Tier 1	\$1,400,000	2012-2019
	PI	Enhancing arm motor recovery through rehabilitation after brain injury: Fundamental and clinically applied research across the lifespan	Canadian Foundation for Innovation	\$145,000	2012-2017
	PI	Virtual Reality Stroke Rehabilitation	Grand Challenges Canada Canada's Rising Stars in Global Health-Round 3	\$113,000	2012-2014
	PI	Impact and treatment of chronic spasticity and muscle weakness on upper-limb disability	Physiotherapy Foundation of Canada	\$4000	2012-2013
	PI	Validation of a novel environment for quantification of arm motor recovery and rehabilitation.	NSERC- Engage Grant	\$24,354	2012-2013
	PI	Support for organization of a scientific conference	CRIR	\$5,000	2012
	PI	Coordination and motor recovery of the upper limb in stroke	CIHR	\$261,777	2009-2012
	Co-PI	Formation multidisciplinaire en évaluation et traitement des troubles de la mobilité et de la posture	CIHR Strategic Training Grant. Program MENTOR	\$1,050,000	2009-2015
	Co-PI	A Rehabilitation Living Lab: Creating enabling physical and social environments to optimize social inclusion and social participation of people with disabilities	FRQS	\$900,000	2011-2014
	Co-I	Neurological sensorimotor rehabilitation: a multi-centric interdisciplinary translational research group.	CIHR	\$2,497,255	2011-2016
	Co-I	StrokEngine: an interactive e-learning resource for moving evidence-based stroke rehabilitation into clinical practice-continuation project.	Canadian Stroke Network	\$254,700	2010-2013
	Co-I	Formation multidisciplinaire en évaluation et traitement des troubles de la mobilité et de la posture.	CIHR	\$1,050,000	2009-2015
	Co-I	Plasticité sensorielle et apprentissage moteur.	FRQNT	\$92,220	2009-2012

FACULTY MEMBER	ROLE	TITLE OF PROJECT	FUNDING AGENCY	FUNDING TOTAL	FUNDING PERIOD
MAJNEMER, A.	PI	Does current practice align with best practice for intensive hand function training in children with hemiplegia? A national environmental scan	Richard & Edith Strauss Canada Foundation	\$12,924	2012-2013
	PI	Knowledge translation initiatives for the Cerebral Palsy Demonstration Project	NCE Neurodevnet	\$60,368	2010-2015
	PI	Determinants of Active Involvement in Leisure for Youth (DAILY: Living with Disability) > a study focused on youth who were born either premature or with a congenital heart defect	CIHR	\$388,272	2010-2014
	PI	Determinants of quality of life and participation in leisure activities in adolescents with cerebral palsy	CIHR	\$300,834	2007-2013
	Co-I	Enhancement of developmental plasticity in perinatal stroke with TDCS"	Heart and Stroke Foundation	\$270,000	2012-2015
	Co-I	Supporting the training of rehabilitation providers in Haiti	IHSP McBurney Professional Training Program	\$72,922	2013-2014
	Co-I	Opening doors to participation of youth with physical disabilities in community activities: A pilot study"	REPAR	\$19,989	2012-2013
	Co-I	NeuroDevNet	National Centre of Excellence (NCE)	\$19,572,000	2010-2015
	Co-I	CP Fit 'n' Fun project: health and social benefits of virtual exercise games in adolescents with cerebral palsy.	NeuroDevNet, NCE	\$75,000	2011-2013
	Co-I	Canadian Child Health Clinician Scientist Program (CCHCSP)	STIHR-CIHR	\$1,625,000	2009-2014
MAYO, N.	PI	The Role of Exercise in Modifying Outcomes for People with Multiple Sclerosis: A Randomized Clinical Trial	CIHR	\$509,169	2012-2015
	PI	Getting on with your life with MS: a knowledge translation tool.	CIHR	\$100,000	2011-2012
	PI	Getting on with the rest of your life after stroke.	Canadian Stroke Network	\$804,684	2008-2012
	Co-PI	Optimizing Brain Health in HIV Now: Accepted LOI	CIHR	\$2,500,000	2013-2018
	Co-PI	Modern Statistical Approaches for Rehabilitation Research	REPAR	\$24,000	2012-2013
	Co-PI	Non-communicable disease indicators for use in a Population Health Record (PopHR): Development and Validation	CIHR	\$200,000	2012-2014
	Co-PI	Adjuvant endocrine therapy in breast cancer: a novel approach in monitoring long term treatment adherence in seniors.	Canadian Cancer Society	\$124,369	2011-2013
	Co-PI	Quantification of the effect of SMOKing on arterial stiffness (SMOKELESS).	CIHR	\$245,286	2010-2013
	Co-PI	The analysis of longitudinal health-related quality of life data: statistical methods for response shift.	CIHR	\$200,000	2010-2012
	Co-PI	Measuring and predicting cognitive impairment in the geriatric clinic.	CIHR	\$542,352	2009-2014
MAZER, B.	PI	Evaluating the on-road performance of older drivers: innovations to enhance safety	Auto21 Network Centres of Excellence	\$202,976	2012-2014
	PI	Inclusive inter-generational Wellness Park for children, adults and seniors with and without disabilities	CRIR-PSI-JRH	\$4,320	2012-2013
	PI	Implementation of an Intergenerational Inclusive Wellness Park to Facilitate Reintegration into Leisure Activities for Clients of a Rehabilitation Hospital	Edith Strauss Rehabilitation Research Projects	\$12,002	2012-2013
	PI	Inclusive inter-generational playground for children, adults and seniors with and without disabilities	CRIR-PSI	\$5,880	2011-2012
	Co-I	Physiotherapy practice and third party payers : issues in professional ethics	CIHR	\$246,574	2012-2015
	Co-I	Les pratiques en physiothérapie et les agents payeurs : explorations des pratiques pancanadiennes	IRSPUM	\$20,000	2012
	Co-I	Identifying and understanding facilitators and obstacles to participation/inclusion within a commercial mall for persons with a physical disability: towards the creation of enabling environments	Office des personnes handicapées de Québec / Réseau provincial de recherche en adaptation-réadaptation (FRQS)	\$35,000	2011-2013
	Co-I	Determinants of Active Involvement in Leisure for Youth: DAILY Living with Disability	CIHR	\$388,272	2010-2013
	Co-I	Team on Older Person Driving (CanDRIVE II)	CIHR	\$5,578,735	2008-2013

FACULTY MEMBER	ROLE	TITLE OF PROJECT	FUNDING AGENCY	FUNDING TOTAL	FUNDING PERIOD
MCKINLEY, P.	Co-I	Développement d'outils de KT pour promouvoir l'utilisation de la danse comme modalité thérapeutique auprès des AVC en RFI	Edith Strauss Rehabilitation Research Projects	\$9,000	2012-2013
	Co-I	Implementation of an Intergenerational Inclusive Wellness Park to Facilitate Reintegration into Leisure Activities for Clients of a Rehabilitation Hospital	Edith Strauss Rehabilitation Research Projects	\$12,002	2012-2013
	Co-I	Identifying and understanding facilitators and obstacles to participation/inclusion within a commercial mall for persons with a physical disability: Towards the creation of enabling environments.	Office des personnes handicapées de Québec / Réseau provincial de recherche en adaptation-réadaptation (FRQS)	\$35,000	2011-2013
	Co-I	Identification et compréhension des facilitateurs et des obstacles à la participation et à l'inclusion sociale dans le context des centres commerciaux : vers la création d'environnements facilitants.	FRQS	\$35,000	2011-2012
MENON, A.	Co-PI	StrokEngine: an interactive e-learning resource for moving evidence-based stroke rehabilitation into clinical practice – Continuation Project	Canadian Stroke Network	\$254,700	2010-2013
NEDELEC, B.	PI	Skin pigmentation, thickness and vascularity: normative data	Fondation des pompiers du Québec pour les Grands Brûlés	\$36,850	2012-2013
	PI	Burn survivor rehabilitation: practice guidelines development training and capacity building proposal	Fondation des pompiers du Québec pour les Grands Brûlés	\$14,550	2012-2013
	PI	Quantification Systématique des cicatrices hypertrophiques des patients brûlés	Fondation des pompiers du Québec pour les Grands Brûlés	\$12,569	2012-2013
	PI	An objective measurement of interface pressure generated by pressure garments in burn survivors.	Fondation des pompiers du Québec pour les Grands Brûlés	\$48,712	2011-2012
	PI	Randomized, controlled, within-patient, single-blinded, pilot study to evaluate the efficacy of corticosteroid injections for the treatment of hypertrophic scar in adult burn survivors.	Fondation des pompiers du Québec pour les Grands Brûlés	\$37,108	2011-2012
	PI	Systematic quantification of hypertrophic scar in adult burn survivors-year 2.	Fondation des pompiers du Québec pour les Grands Brûlés	\$18,769	2011-2012
PARK, M.	PI	The use of PAR to cultivate values-based rehabilitation practices in a mental health institution	Richard & Edith Strauss Canada Foundation	\$13,810	2011-2012
	PI	Partnering between persons living with serious mental disorders and health/social care practitioners: A cross-national, mixed methods study of connectedness and the therapeutic relationship	Marie Curie European Union co-fund Swedish Council of Working Life and Social Research (& McGill Start Up Funds)	\$265,000	2010-2013
	Co-I	Implementation of an intergenerational inclusive Wellness Park to facilitate reintegration into leisure activities for clients in a rehabilitation hospital	Richard & Edith Strauss Canada Foundation	\$12,002	2012-2013
	Co-I	The first episode psychosis movement: an ethnography of new hopes to untangle stigma and psychosis	CIHR	\$102,000	2011-2013
	Co-PI	Creating inclusive communities: Challenging the status quo through a multi-national innovation integration of ethnography and photovoice among elder migrant.	Toyota Foundation	Yen 6,070,000	2010-2012
PEREZ, C.	Co-PI	Pilot study to compare shopping activities in real and virtual environments.	CRIR-PSI	\$5,000	2011-2012
PREUSS, R.	PI	Development of an optimal data acquisition protocol for spine kinematics and trunk muscle activation in patients with non-specific low back pain	REPAR	\$20,000	2012-2013
	PI	Physical therapy for musculoskeletal back pain: understanding the biomechanical, neuromuscular, and clinical effects of conservative treatment	Canada Foundation for Innovation	\$202,250	2010-2015
	PI	Pain, mind, and movement: virtual research and rehabilitation laboratory network" (Project 12568-transferred from M. Simmonds.)	Canada Foundation for Innovation	\$765,318	2008-2013
	Co-I	Mise en oeuvre et évaluation d'un réseau intégré de prévention et de gestion de la douleur chronique en 1re ligne	FRQS	\$621,250	2012-2014
	Co-I	Développement préliminaire d'une règle de prédiction clinique pour dépister les patients ayant une lombalgie non-aigue répondant favorablement à un programme d'exercices de stabilisation lombaire	IRSST	\$487,579	2012-2015
	Co-PI	Enhancing mobility and postural control for persons with SCI through a concerted translational rehabilitation research approach: next generation	ONF-REPAR	\$120,000	2012-2015
ROBBINS, S.	PI	Examining neuromuscular changes with valgus brace wear in patients with secondary knee osteoarthritis	Physiotherapy Foundation of Canada	\$5,000	2011-2012

FACULTY MEMBER	ROLE	TITLE OF PROJECT	FUNDING AGENCY	FUNDING TOTAL	FUNDING PERIOD
ROULEAU, S.	Co-I	The Canadian survey of mental health occupational therapists' assessment practices	Richard & Edith Strauss Canada Foundation	\$15,000	2011-2012
	Co-I	Pilot study on driving assessments for clients seen in mental health	COTF	\$5,000	2008-
SAUNDERS, S.	PI	The meaning of work for injured workers living with chronic pain, long-term work disability and job loss	CIHR	\$105,000	2009-2012
	PI	People with chronic work disability want to work, so what is stopping them?	CIHR	\$5,500	2012
	PI	People with chronic work disability want to work, so what is stopping them?	REPAR	\$100	2012
SNIDER, L.	PI	Teachers' perception of their own performance, satisfaction, and self-efficacy to support the self-regulation of their students: A pilot study	Strauss Knowledge Translation Awards	\$10,000	2012-2013
	Co-PI	Transition of health delivery services for stakeholders with spina bifida	Strauss Knowledge Translation Awards	\$15,000	2011-2012
	Co-PI	Inclusive intergenerational playground for children, adults and seniors with and without disabilities	CRIR	\$5,880	2011-2012
SOICHER, J.	Co-I	RCT pilot project: maximizing the effects of self-management interventions on chronic disease outcomes: The development of a Chronic Obstructive Pulmonary Disease (COPD) web-based patient portal.	CIHR	\$336,075	2011-2014
SPAHIJA, J.	PI	Innovative approaches to mechanical ventilation in spinal cord injured patients	Spinal Cord Source - Injury Solutions Network	\$65,301	2011-2013
	PI	Approches innovatrices pour la ventilation mécanique chez les blessés médullaires	FRQS	\$134,177	2010-2012
	PI	Evaluation of factors contributing to respiratory insufficiency and ventilator strategies and other therapies on complications and prognosis in spinal cord injured patients	Aliments O Sole Mio	\$53,500	2009-2012
	Co-PI	Innovative approaches to mechanical ventilation in spinal cord injured patients	Ontario Neurotrauma Foundation's Best and Brightest Program	\$120,000	2011-2013
STORR, C.	Co-PI	MELS Insertion dans le milieu travail	MELS	\$150,000	2011-2012
THOMAS, A.	PI	Impact d'activités de partenariat recherché-clinique sur l'utilisation des résultats de la recherche dans un établissement de réadaptation	Richard & Edith Strauss Canada Foundation	\$15,000	2011-2012
	Co-I	Supporting the training of rehabilitation providers in Haiti	IHSP	\$72,922	2012-2016
	Co-I	Pilot project for the promotion of self-management of chronic mobility limitations among vulnerable seniors at the MUHC: Training the new generation of Canadian PTs for this role	Strauss Knowledge Translation Awards	\$11,650	2012-2013
VENTURINI, A.	Co-I	Supporting the training of rehabilitation providers in Haiti	IHSP	\$72,922	2012-2016
ZAFRAN, H.	PI	The clinical use an expressive projective test with help-seeking youth: A mixed methods inquiry into elicited narratives and patterns of performance	Faculty of Medicine International Travel Award	\$3,000	2012
	Co-I	The first episode psychosis movement: An ethnography of new hopes to untangle stigma and psychosis.	CIHR	\$100,000	2011-2013

PEER-REVIEWED

Ahmed, S., Basch, E., Berzon, R.A., Lenderking, W.R., Moinpour, C.M., Reeve, B.B., Revicki, D.A., Wu, A.W. (2012). The Use of Patient-Reported Outcomes (PRO) within Comparative Effectiveness Research: Implications for Clinical Practice and Healthcare Policy. *Medical Care*, 50:1060-70.

Alcock, G.K., Werstine, M.S., **Robbins, S.M.**, Stratford, P.W. (2012). Longitudinal changes in the Lower Extremity Functional Scale following anterior cruciate ligament reconstructive surgery. *Clinical Journal of Sports Medicine*, 22(3):234-239.

Anaby, D., Law, M., Hanna, S., DeMatteo, C. (2012). Predictors of change in participation rates following Acquired Brain Injury: Results of a longitudinal study. *Developmental Medicine and Child Neurology*, 54(4):339-346.

Archambault, P.S., Tremblay, S.*, Cachecho, S.*, Routhier, F., Boissy, P. (2012). Driving performance in a power wheelchair simulator. *Disability and Rehabilitation: Assist Tech*, 7:226-33.

Auais, M.*, Eilayyan, O.*, **Mayo, N.E.** (2012). Extended Exercise Rehabilitation After Hip Fracture Improves Patients' Physical Function: A Systematic Review and Meta-Analysis. *Physical Therapy*, 92(11):1437-51.

Barclay-Goddard, R.*, Ripat, J., **Mayo, N.E.** (2012). Developing a model of participation post-stroke: a mixed-methods approach. *Quality of Life Research*, 21:417-426.

Bayley, M., Hurdowar, A., Richards, C., **Korner-Bitensky, N.**, Wood-Dauphinee, S., Eng, J., MacKay-Lyons, M., Harrison, E., Teasell, R., Harrison, M., Graham, I. (2012). Barriers to implementation of stroke rehabilitation evidence: Findings from a multi-site pilot project. *Disability and Rehabilitation*, 34(19):1633-1638.

Belchior, P., Marsiske, M., Sisco, S., Yam, A., Bavelier, D., & Ball, K., Mann, W. (2013). The impact of video game training on selected visual attention in older adults. *Computers in Human Behavior*, 29(4):1318-1324.

Belchior, P., Marsiske, M., Sisco, S., Yam, A., Mann, W. (2012). Older adults engagement with a video game training program. *Activities, Adaptation and Aging*, 36(4):269-279.

Berard, J.*, **Fung, J., Lamontagne, A.** (2012). Impact of aging on visual reweighting during locomotion. *Clinical Neurophysiology*, 123(7):1422-1428.

Berard, J.*, **Fung, J., Lamontagne, A.** (2012). Visuomotor control post stroke can be affected by a history of visuospatial neglect. *Journal of Neurology and Neurophysiology*, S1:1-8.

Bolduc, M.E., Du Plessis, A.J., Sullivan, N., Guizard, N., Zhang, X., Robertson, R.L., Limperopoulos, C. (2012). Regional cerebellar volumes predict functional outcome in children with cerebellar malformations. *Cerebellum*, 11(2):531-42.

Bottari, C., Lamothe, M-P., Gosselin, N., **Gélinas, I.**, Ptito, A. (2012). Driving Difficulties and Adaptive Strategies: the Perception of Individuals Having Sustained a Mild Traumatic Brain Injury. *Rehabilitation Research and Practice*, 1-9.

Brodeur, M., **Kehayia, E.**, Dion-Lessard, G., Chauret, M., Montreuil, T., Dionne-Dostie, E., Lepage, M. (2012). The bank of standardized stimuli (BOSS): comparison between French and English norms. *Behavior Research Methods*, (44):961-970.

Brossard-Racine, M.*, **Majnemer, A.**, Shevell, M., **Snider, L.**, Belanger, A.S. (2012). Motor skills of children newly diagnosed with Attention Deficit Hyperactivity Disorder prior to and following treatment with stimulant medication. *Research in Developmental Disabilities*, 33(6):2080-2087.

Brossard-Racine, M.*, **Mazer, B.**, Julien, M., **Majnemer, A.** (2012). Validating the use of the Evaluation Tool of Children's Handwriting-Manuscript (ETCH-M) to identify handwriting difficulties and monitor change in school-aged children. *American Journal of Occupational Therapy*, 66:414-421.

Brossard-Racine, M.*, **Majnemer, A.**, Hall, N., Shevell, M., Law, M., Poulin, C., Rosenbaum, P. (2012). Behavioural problems in children with cerebral palsy. *European Journal of Pediatric Neurology*, 16:35-41.

Bussièrès, A.E., Patey, A., Francis, J.J., Sales, A., Grimshaw, J.M. (2012). Identifying factors likely to influence compliance with diagnostic imaging guideline recommendations for spine disorders among chiropractors in North America: a focus group study using the Theoretical Domains Framework. *Implementation Science*, 7:82.

Couture, M.*, Vincent, C., **Gélinas, I.** (2012). Enquête concernant l'entraînement des fonctions cognitives en vue de la conduite automobile. *Ergothérapies*, 47:5-14.

Dahan-Oliel, N.*, **Mazer, B.**, **Majnemer, A.** (2012). Preterm birth and leisure participation: A synthesis of the literature. *Research in Developmental Disabilities*, 33:1211-1220.

Dahan-Oliel, N.*, Shikako-Thomas, K.*, **Majnemer, A.** (2012). Quality of life and leisure participation in children with neurodevelopmental disabilities: A thematic analysis of the literature. *Quality of Life Research*, 21:427-439.

Finestone, H.M., Singer, L.*, **Mayo, N.E.**, O'Brien, E., Fisher, W.A. (2012). The pain explanation and treatment diagram: a tool to enhance patient self-management of persistent pain. *PubMed*, 4(6):456-8.

Gogognon, P., **Hunt, M.**, Ridde, V. (2012). Les enjeux éthiques d'une recherche-action sur une sélection communautaire des indigents au Burkina Faso. *Éthique et Santé*, 9(4):148-155.

Gogovor, A.*, Burnand, B., **Ahmed, S.**, Montague, T., Peytremann-Bridevaux, I. (2012). Team Effectiveness in Patient Health Management: An Overview of Reviews. *International Journal of Clinical Medicine*, 3(7):614-627.

Hacmon, R., Krasovsky, T., **Lamontagne, A., Levin, M.F.** (2012). Deficits in intersegmental trunk coordination during walking are related to clinical balance and gait function in chronic stroke. *Journal of Neurological Physical Therapy*, 36(4):173-81.

Hadad, S., **Fung, J.**, Weiss, P., **Perez, C., Mazer, B., Levin, M.**, Kizony, R. (2012). Rehabilitation tools along the reality continuum: from mock-up to virtual interactive shopping to a living lab. *Proc Intl Conf Disabilit Virtual Reality and Associated Technologies*, 9:47-52.

Hebert, M.*, **Kehayia, E.**, Prelock, P., Wood-Dauphinee, S., **Snider, L.** (2012). Communication and Occupation: New Avenues for Autism. *Occupational Therapy Now*, 13.6:22-23.

Hunt, M., Anderson, J., Boulanger, R.* (2012). Ethical implications of disaster research diversity. *American Journal of Disaster Medicine*, 7(3): 211-221.

Hunt, M., Carnevale, F. (2012). Exploring disability through the lens of moral experience. *Physical Therapy Reviews*, 17(6):369-373.

Hunt, M., Schwartz, L., Elit, L. (2012). Experience of ethics support and training for health professionals in international aid work. *Public Health Ethics*, 5(1):91-99.

Kaizer, F., Spiridigliozzi, A-M., **Hunt, M.** (2012). Promoting shared decision-making in rehabilitation: Development of a framework for situations when dysphagic patients refuse diet modification recommended by the treating team. *Dysphagia*, 27:81-87.

Krasovsky, T., Baniña, M.C., Hacmon, R., Feldman, A.G., **Lamontagne, A., Levin, M.F.** (2012). Stability of gait and interlimb coordination in older adults. *Journal of Neurophysiology*. 107(9):2560-2569.

Kuspinar, A.*, Rodriguez, A.M.*, **Mayo, N.E.** (2012). The effects of clinical interventions on health-related quality of life in multiple sclerosis: a meta-analysis. *Multiple Sclerosis*, 18(12):1686-704.

Law, M., King, G., Petrenchik, T., Kertoy, M., & **Anaby, D.** (2012). The Assessment of Preschool Children's Participation: Internal Consistency and Construct Validity. *Physical and Occupational Therapy in Pediatrics*; 32(3):272-87.

Levin, M.F., Snir, O.*, Liebermann, D.G., Weingarden, H., Weiss, P.L. (2012). Virtual reality versus conventional treatment of reaching ability in chronic stroke: Clinical feasibility study. *Neurology and Therapy*, 1:3-15.

Liebermann, D.G., Berman, S., Weiss, P.L., **Levin, M.F.** (2012). Kinematics of reaching movements in a 2D virtual environment in adults with and without stroke. *IEEE Transactions on Neural Systems and Rehabilitation Engineering*, 20(6):778-787.

Majnemer, A., Limperopoulos, C., Shevell, M., Rohlicek, C., Rosenblatt, B., Tchervenkov, C. (2012). Gender differences in the developmental outcomes of children with congenital heart defects who required early open heart surgery. *Cardiology in the Young*, 25:1-6.

Majnemer, A., Shevell, M., Poulin, C., Law, M., Rosenbaum, P. (2012). Indicators of distress in families of children with cerebral palsy. *Disability and Rehabilitation*, 34:1202-1207.

Ménard, I., Benoit, M.*, Boulé-Laghzali, N.*, Hébert, M.C.*, Parent-Taillon, J.*, Pérusse, J.*, **Rouleau, S., Korner-Bitensky, N.** (2012). Occupational therapists' perceptions of the role of occupational therapy in screening and assessment of driving capacity in individuals with psychiatric conditions. *OT in Mental Health*, 28(1):36-50.

Menon, A.*, **Korner-Bitensky, N.**, Chignell, M., Straus, S. (2012). Usability testing of two e-learning resources: methods to maximize potential for clinician use. *Journal of Rehabilitation Medicine*, 44(4):338-45.

Moga, A.M.*, de Marchie, Saey D., **Spahija, J.** (2012). Mechanisms of Non-Pharmacologic Adjunct Therapies Used During Exercise in Chronic Obstructive Pulmonary Disease. *Respiratory Medicine*, 106:614-626.

Nedelec, B., Parnell, L.K.S., Rachelska, G., LaSalle, L. (2012). Double-blind, randomized, pilot study assessing the resolution of post-burn pruritus. *Journal of Burn Care Research*, 33:398-406.

Nedelec, B., Serghio, M.A., Niszcza, M., McMahan, M., Healey, T. (2012). Practice guidelines for early ambulation of burn survivors after lower extremity grafts. *Journal of Burn Care Research*, 33:319-29.

Norouzi-Gheidari, N.*, **Archambault, P., Fung, J.** (2012). Effects of robot-assisted therapy on stroke rehabilitation of upper extremities: systematic review and meta-analysis of the literature. *Journal of Rehabilitation Research and Development*, 49(4):479-96.

Park, M. (2012). Pleasure, Throwing Breaches, and Embodied Metaphors: Tracing Transformation-in-Participation for a Child With Autism to Sensory Integration-Based Therapy Session. *OTJR: Occupation, Participation and Health*, 32:S34-S47.

Parnell, L.K.S., **Nedelec, B.**, Rachelska, G., LaSalle, L. (2012). Assessment of pruritus characteristics and impact on burn survivors. *Journal of Burn Care Research*, 33:407-418.

Petzold, A.*, **Korner-Bitensky, N.**, Salbach, N., **Ahmed, S., Menon, A.***, Ogourtsova, T.* (2012). Increasing knowledge of best practice in occupational therapists treating post-stroke unilateral spatial neglect: results of a knowledge translation intervention study. *Journal of Rehabilitation Medicine*, 44(2):118-24.

Pinniger, R.*, Brown, R., Thorsteinsson, E., **McKinley, P.** (2012). Argentine tango dance compared to mindfulness meditation and a waiting-list control: a randomized trial for treating depression. *Complementary Therapies in Medicine*, 20:377-384.

Pomerleau, G.*, Hurteau, A-M., Parent, L., Doucet, K., **Gagnon, I.** (2012). Developmental trajectories of infants and toddlers with good initial presentation following moderate or severe traumatic brain injury: a pilot project. *Journal of Pediatric Rehabilitation Medicine*, 5:89-97.

Poulin, V.*, **Korner-Bitensky, N.**, Dawson, D., Bherer, L. (2012). Efficacy of executive function interventions after stroke: a systematic review. *Top Stroke Rehabilitation*, 19(2):158-71.

Provencher, V.*, Demers, L., Gagnon, L., **Gélinas, I.** (2012). Impact of familiar and unfamiliar settings on cooking task assessments in frail older adults with poor and preserved executive functions. *International Psychogeriatric*, 24(5):775-783.

Provencher, V.*, Demers, L., **Gélinas, I.** (2012). Frailty: a concept under utilised by occupational therapists. *Australian Occupational Therapy Journal*, 59:328-331.

Provencher, V., Demers, L., Giroux, F., **Gélinas, I.** (2012). Cooking task assessment in frail older adults: who performed better at home and in the clinic? *Scandinavian Journal of Occupational Therapy*, 1-12.

Rahman, M.H.*, Kittel-Ouimet, T.*, Saad, M., Kenné, J.P., **Archambault, P.S.** (2012). Development of A 4DOF Robotic exoskeleton for passive arm movement assistance. *International Journal Mechatron Automat*, 3:34-50.

Rossichol, S., Frigon, A., Barriere, G., Allum, O., **Barbeau, H.**, Martinez, M. (2012). Spinal plasticity in the recovery of locomotion. *In Brain Research*, 188:229-241.

Sangani, S.*, Weiss, P., Kizony, R., Koenig, S., **Levin, M., Fung, J.** (2012). Development of a complex ecological virtual environment. Proc Intl Conf Disability, *Virtual Reality and Associated Technologies*, 9:261-268.

Schwartz, L., **Hunt, M.**, Sinding, C., Elit, L., Redwood-Campbell, L., Adelson, N., DeLaat, S. (2012). Models for humanitarian health care ethics. *Public Health Ethics*, 5(1):81-90.

Sofianidis, G.*, Hatzitaki, V., **Mckinley, P.** (2012). Expertise, auditory guidance and cultural influences on dance performance. *Journal of Dance Medicine and Science*, 16(2):57-68.

Soicher, J.E.*, **Mayo, N.E.**, Gauvin, L., Hanley, J.A., Bourbeau, J. (2012). Trajectories of Endurance Activity following Pulmonary Rehabilitation in COPD Patients. *European Respiratory Journal*, 39:272-278.

Tester, N., **Barbeau, H.**, Howland, D., Can Treland, A., Behrman, A. (2012). Arm and leg coordination during treadmill walking in individuals with motor incomplete spinal cord injury: A preliminary. *Gait and posture*, 101:259-274 .

Thomas, A.*, Saroyan, A., **Snider, L.M.** (2012). Evidence-based practice behaviours: A comparison amongst occupational therapy students and clinicians. *Canadian Journal of Occupational Therapy*, 79:96-107.

Thomas, A., Saroyan, A., Lajoie, P.S. (2012). Development of an evidence-based practice reference model: Findings from occupational therapy. *Disability and Rehabilitation*, 34(3):311-328.

Vafadar, A.K.*, Côté, J., **Archambault, P.S.** (2012). The Effect of Muscle Fatigue on Position Sense in an Upper Limb Multi-joint Task. *Motor Control*, 16:265-83.

Woznowski-Vu, A.*, **Preuss, R.** (2012). The effect of previous loading cycles on the reliability of a clinical measure of hamstring flexibility. *Physiotherapy Canada*, 64(3):242-244.

Xie, H.*, **Mayo, N.E.**, Koski, L. (2012). Predictors of Future Cognitive Decline in Persons with Mild Cognitive Impairment. *Dementia and Geriatric Cognitive Disorders*, 32:308-317.

Zafran, H., Tallant, B., **Gélinas, I.** (2012). A First-Person Exploration of the Experience of Academic Reintegration after First Episode Psychosis. *International Journal of Psychosocial Rehabilitation*, 16(1):29-46.

NON PEER-REVIEWED

Anekwe, D.*, de Marchie, M., **Spahija J.** (2012). Does adding a Plateau Valve to non-invasive Bilevel Positive Airway Pressure (BIPAP) ventilation improve maximum exercise capacity in individuals with moderate to severe COPD? Réunion du regroupement stratégique MPOC du Réseau en Sante Respiratoire du FRSQ. Montreal.

Anekwe, D.*, **Spahija, J.** (2012). Effect Of Bilevel Positive Airway Pressure Ventilation with Plateau Valve Compared With Pressure Support Ventilation on Maximum Exercise Capacity In Individuals With COPD. *13th Rehabilitation Research Colloquium McGill University.*

Coster, W., Law, M., Bedell, G., Khetani, M., **Anaby, D.** (2012). The Participation and Environment Measure for Children and Youth (PEM-CY) – An innovative measure for home, school, and community. *CanChild Webinar presentation.*

Darekar, A.*, Aravind, G.*, Goussev, V., **Lamontagne, A., Fung, J.** (2012). Perceptual motor and locomotor strategies for safe obstacle circumvention in a virtual environment. *Proc ISPGR/Gait & Mental Functions 1st Joint World Congress, 246-247.*

Darekar, A.*, Goussev, V., McFadyen, B., **Lamontagne, A., Fung, J.** (2012). Spatial navigation in the presence of dynamic obstacles in a virtual environment: A differential games approach. *Soc Neuroscience Abstr, 37:274.18*

de Bruin, E., **Fung, J.,** Mirelman, A. (2012). Exergaming to influence walking. *Proc ISPGR/Gait & Mental Functions 1st Joint World Congress, 5.*

de Laat, S., Schwartz, L., Williams-Jones, B., **Hunt, M.,** Rochon, C., Okhowat, A.* (2012). Combat Hospital's deployment of ethics and entertainment. *Canadian Medical Association Journal. 184(6):680-681.*

Fung, J., Patterson, K.*, **Perez, C.,** Goussev, V. (2012). Vector space analysis of the body centre of mass movements to determine gait stability in normal and impaired locomotion. *Proc ISPGR/Gait & Mental Functions 1st Joint World Congress, 125-126.*

Korner-Bitensky, K. et al – StrokEngine Newsletter – 2 annually.

www.strokengine.ca, www.strokengine-assess.ca, www.strokengine-family.ca

MacLellan, M., Richards, C., **Fung, J.,** MacFadyen, B. (2012). Comparison of locomotor control mechanisms for segmental coordination between paretic and non-paretic limbs during obstacle clearance following stroke. *Proc ISPGR/Gait & Mental Functions 1st Joint World Congress, 263-264.*

Majnemer, A. (2012). Vigilance to behavioral problems needed for children with developmental disability. *Phys Occ Ther Pediatr, 32(1):1-3.* (editorial commentary).

Majnemer, A. (2012). Promoting wellness is achievable in rehabilitation-but what are the critical ingredients for success? *Devel Med Child Neurol, 54:388-389.* (invited commentary).

Otfinowski, C.*, **Fung, J., Spahija, J.** (2012). Breathing patterns in response to increased walking speed post-stroke. *13th Research Colloquium in Rehabilitation, School of Physical and Occupational Therapy, McGill University.*

Patterson, K.*, Goussev, V., **Perez, C., Fung, J.** (2012). Cognitive load does not interfere with the coordination of cane use during locomotion. *Proc ISPGR/Gait & Mental Functions 1st Joint World Congress*, 274-275.

Robbins, S. (2012). How the Certificate in University Teaching and Learning helped me get a job (and become a better teacher). *Focus, Centre for Learning and Teaching, Dalhousie University*, 20(2):11.

Smallhorn, P.*, **Spahija, J.**, Otfinowski, C.*, **Perez, C., Fung, J.** (2012). Assessing the interaction of respiratory and locomotor systems post stroke: from physiology to rehabilitation. *Proc ISPGR/Gait & Mental Functions 1st Joint World Congress*, 44-45.

Sorrento, G.*, **Archambault, P., Fung, J.** (2012). Enhancement of locomotor and postural control by haptic forces: A pilot study. *Proc ISPGR/Gait & Mental Functions 1st Joint World Congress*, 286.

Sorrento, G.*, **Archambault, P., Fung, J.** (2012). Enhancement of locomotor control with haptic forces for stroke rehabilitation: A pilot study. *Soc Neuroscience Abstr*, 37:184.07.

Storr, C. (2012). Association of Canadian Occupational Therapy University Programs & Canadian Association of Occupational Therapists Position Statement: Professional responsibility in fieldwork education in occupational therapy.

INVITED REVIEWS, CHAPTERS, COMMENTARIES, EDITORIALS

Cadilhac, D., Purvis, T., Bernhardt, J., **Korner-Bitensky, N.** (2012). Chapter 7: Organization of Care: Part C: Stroke rehabilitation: Creating the right learning conditions for rehabilitation. Multidisciplinary approach to rehabilitation; Models of delivery of therapy and timing of stroke rehabilitation. In *Stroke Rehabilitation: Insights from Neuroscience and Imaging*. Oxford University Press.

Chung, R., **Hunt, M.** (2012). Justice and Health Inequalities in Humanitarian Crises: Structured Health Vulnerabilities and Natural Disasters. In Straehle, C., Lenard, P. (eds.), *Inequalities and global justice*. Edinburgh, UK: Edinburgh University Press.

Devos, H., Akinwuntan, A.E., **Gélinas, I.**, George, S., Nieuwboer, A., Verheyden, G. (2012). Shifting up a gear: considerations on assessment and rehabilitation of driving in neurological conditions. *Physiotherapy Research International*, 17(3):125-131. (extended editorial)

Gélinas, I., George, S. (2012). Screening drivers with cognitive impairments using DriveSafe and DriveAware: promising tests to predict safe and unsafe drivers. *Australian Occupational Therapy Journal*, 59(1):105-6.

Gogovor A.*, **Ahmed, S.** (2012). Asthma Quality of Life Questionnaire. In *Encyclopedia of Quality of Life Research*. Springer Science and Business Media.

Gogovor, A.*, **Ahmed, S.** (2012). Asthma. In *Encyclopedia of Quality of Life Research*. Springer Science and Business Media.

Hunt, M., Schwartz, L. (2012). Introduction to symposium on humanitarian health work and ethics. In *Public Health Ethics*. 5(1):47-48. (editorial)

Iverson, G.L., **Gagnon, I.**, Griesbach, G.S. (2012). Active rehabilitation for slow-to-recover children following mild traumatic brain injury. In Yeates, K.O., Kirkwood, M. (eds.), *Pediatric Mild Traumatic Brain Injury: From Basic Science to Clinical Management*. Guilford Press.

Korner-Bitensky, N. (2012). When does stroke rehabilitation end? *International Journal of Stroke*. (commentary)

Majnemer, A. (2012). Selection and use of outcome measures. In Majnemer, A. (ed.), *Measures for Children with Developmental Disabilities: An ICF-CY Approach*. MacKeith Press.

Majnemer, A. (2012). The purpose and framework of this text. In Majnemer, A. (ed.), *Measures for Children with Developmental Disabilities: An ICF-CY Approach*. MacKeith Press.

Majnemer, A. (ed.). (2012). Presents and reviews outcome measures across a wide range of attributes that are applicable to children and youth with developmental disabilities. In *Measures for Children with Developmental Disability framed by the ICF-CY*. MacKeith Press.

Mazer, B., Majnemer, A., Dahan-Oliel, N., Sebestyen, I. (2012). Global developmental assessments. In Majnemer, A. (ed.), *Measures for Children with Developmental Disabilities: An ICF-CY Approach*. MacKeith Press.

McQuillen, P., **Majnemer, A.** (2012). Neurological injury and outcomes in children with congenital heart defects.. In Shevell, M., Miller, S.P., (eds.), *Acquired Brain Injury in the Fetus and Newborn*. MacKeith Press. pp.251-267.

Morris, C., **Majnemer, A.** (2012). Activities and participation: An overview of generic measures. In Majnemer, A. (ed.), *Measures for Children with Developmental Disabilities: An ICF-CY Approach*. MacKeith Press.

Rahman, M.H.*, Saad, M., Kenne, J.P., **Archambault, P.S.** (2012). Nonlinear Sliding Mode Control Implementation of an Upper Limb Exoskeleton Robot to Provide Passive Rehabilitation Therapy. In Su, C.Y., Rakheja, S., Liu, H. (eds.), *Intelligent Robotics and Applications*. Springer, Heidelberg. pp.52-62.

Schwartz, L., **Hunt, M.**, Sinding, C., Elit, L., Redwood-Campbell, L., Adelson, N., De Laat, S., Ranford, J. (2012). Western clinical health ethics: How well do they travel to humanitarian contexts? In Abu-Sada, C. (ed.), *Dilemmas, challenges and ethics of humanitarian action*. McGill Queen's University Press. pp.73-88.

Snider, L. (2012). Measurement of educational attainment in school-aged children born preterm. *Developmental Medicine in Child Neurology*. 54(6):490.

Snider, L., Darsaklis, V.* (2012). Overview of Pediatric Scales for Activities of Daily Living. In Majnemer, A. (ed.), *Measures for Children with Developmental Disabilities: An IFC-CY Approach*. MacKeith Press.

Taylor, J.A.M., **Bussièrès, A.E.** (2012). Diagnostic imaging for spinal disorders in the elderly: A narrative review. *Chiropractic & Manual Therapies*, 20(1):16.

Témisjian, K., Douville, M. **McKinley, P.**, Duquette, J., Gresset, J., Poldma, T., Cataford, G. (2012). Effets du tango argentin sur la qualité de vie des personnes âgées avec déficience visuelle. Dans Wanet-Defalque, M.-C., Overbury, O., Temisjian, K. (dir.). *Actes du 13e Symposium scientifique sur l'incapacité visuelle et la réadaptation « Innover pour mieux intervenir »* (pp. 37-40). Montréal : INLB et Université de Montréal.

Thomas, A. (2012). Occupational therapists Involvement, views and training needs of evidence based practice: a rural perspective. In Hu, D., *International Journal of Therapy and Rehabilitation*, 19, 11, 618. (commentary)